

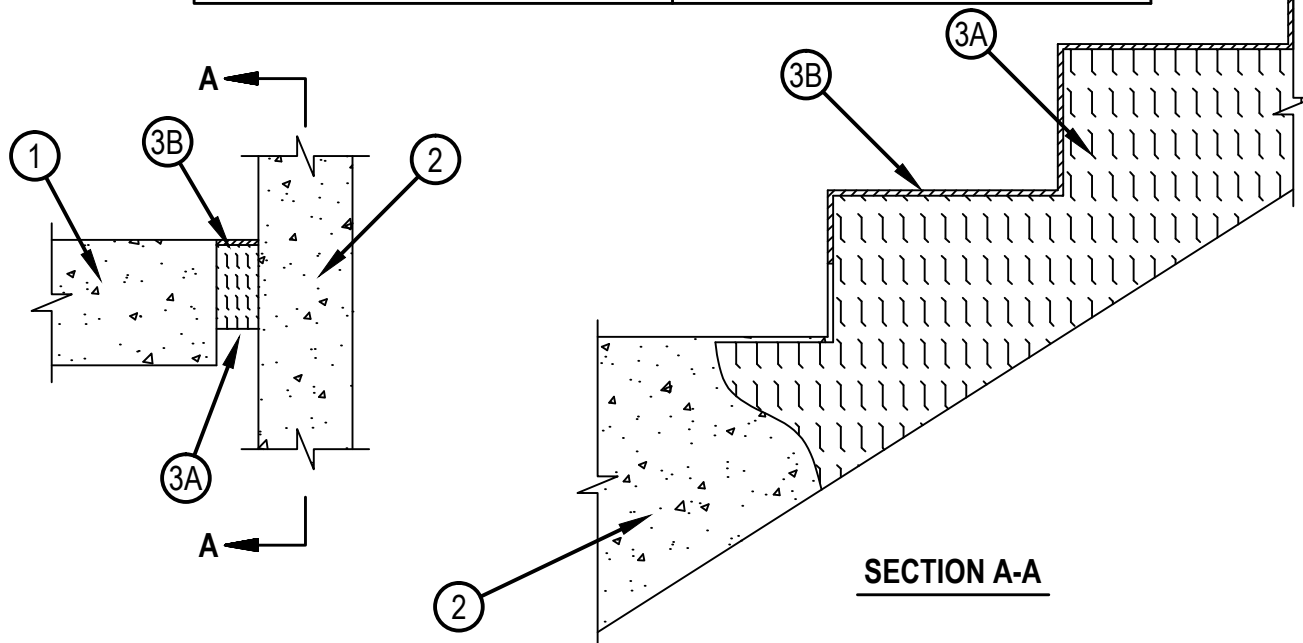


Classified by  
Underwriters Laboratories, Inc.  
to UL 2079 and CAN/ULC-S115

## System No. FW-D-0066

FWD 0066

ANSI/UL2079	CAN/ULC S115
Assembly Rating — 2 Hr	F Rating — 2 Hr
Class II Movement Capabilities — 33% Compression or Extension	FT Rating — 2 Hr
L Rating At Ambient — Less Than 1 CFM/sq ft	FH Rating — 2 Hr
L Rating At 400 F — Less Than 1 CFM/sq ft	FTH Rating — 2 Hr
	Nominal Joint Width - 2 In.
	Class II Movement Capabilities — 33% Compression or Extension
	L Rating At Ambient — Less Than 1 CFM/sq ft
	L Rating At 400 F — Less Than 1 CFM/sq ft



1. Wall Assembly — Min 6 in. (152 mm) thick reinforced lightweight or normal weight (100-150 pcf (1600-2400 kg/m<sup>3</sup>) structural concrete. Wall may also be constructed of any UL Classified Concrete Blocks\*.

See Concrete Blocks (CAZT) category in the Fire Resistance Directory for names of manufacturers.

2. Stair Assembly — Min 4-1/2 in. (114 mm) thick reinforced lightweight or normal weight (100-150 pcf (1600-2400 kg/m<sup>3</sup>) structural concrete.

3. Joint System — Max width of joint (at time of installation of joint system) is 2 in. (51 mm). The joint system is designed to accommodate a max 33 percent compression or extension from its installed width. The joint system shall consist of the following:

A. Forming Material\* — Min 4 pcf (64 kg/cu meter) mineral wool batt insulation installed in joint opening as a permanent form. Pieces of batt cut to min width of 4 in. (102 mm) and installed edge-first into joint opening, parallel with joint direction, such that batt sections are compressed min 50 percent in thickness and that the compressed batt sections are recessed from top surface of stair assembly to accommodate the required thickness of fill material.

ROCK WOOL MANUFACTURING CO — Delta Board

THERMAFIBER INC — SAF Mineral Wool

B. Fill, Void or Cavity Material\* — Sealant — Min 1/4 in. (6 mm) thickness of fill material applied within the annulus, flush with top surface of floor. As an option, in addition to the sealant installed flush with the top surface of floor, a min 1/4 in. (6 mm) thickness of fill material may be applied within the annulus, flush with the bottom surface of floor.

HILTI CONSTRUCTION CHEMICALS, DIV OF HILTI INC — CFS-S SIL GG

\*Bearing the UL Classification Mark



**Hilti Firestop Systems**

Reproduced by HILTI, Inc. Courtesy of  
Underwriters Laboratories, Inc.  
December 26, 2013