



Classified by  
Underwriters Laboratories, Inc.  
to CAN/ULC-S115

## System No. F-A-2219

F Rating — 2 Hr

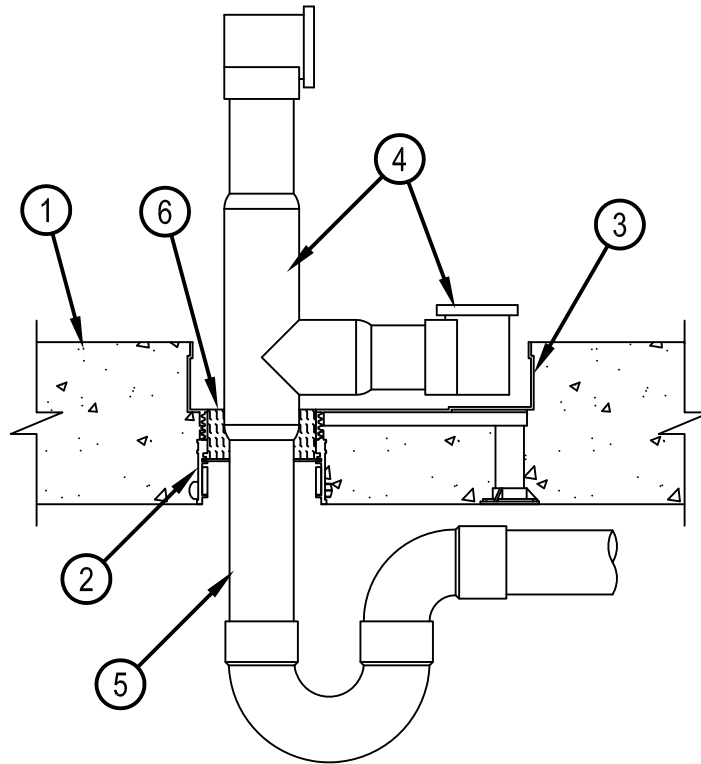
FT Ratings — 3/4 and 2 Hr (See Item 4)

FH Rating — 0 Hr

FTH Rating — 0 Hr



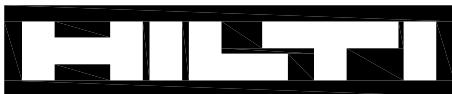
FA 2219



System tested with a pressure differential of 50 Pa between the exposed and the unexposed surfaces with the higher pressure on the exposed side.

1. Floor Assembly — Min 152 mm (6 in.) thick reinforced lightweight or normal weight (1600-2400 kg/m<sup>3</sup> or 100-150 pcf) concrete.
2. Firestop Device\* — Cast in place firestop device with intumescent ring permanently embedded during concrete placement or grouted in concrete assembly in accordance with accompanying installation instructions. Device to be installed flush with bottom of floor. Top of device cut flush with bottom surface of tub box (Item 3).
- HILTI CONSTRUCTION CHEMICALS, DIV OF HILTI INC — CP 680-P 3", CP 680-PX 3"
3. Firestop Device\* - Tub Box — Nom 216 by 305 by 51 mm (8-1/2 by 12 by 2 in.) deep acrylonitrile butadiene styrene (ABS) tub box with adjustable legs. Cast in place firestop device installed above firestop device (Item 2) and permanently embedded during concrete placement or grouted in concrete assembly in accordance with accompanying installation instructions.
- HILTI CONSTRUCTION CHEMICALS, DIV OF HILTI INC — CP 681 Tub Box
- 3A. Firestop Device\* — As an alternate to Items 2 and 3, the CP 681-3" firestop device may be used. Device consists of nom 8-1/2 by 12 by 2 in. (216 by 305 by 51 mm) deep acrylonitrile butadiene styrene (ABS) tub box with adjustable legs and integral firestop device permanently embedded during concrete placement or grouted in concrete assembly in accordance with accompanying installation instructions.
- HILTI CONSTRUCTION CHEMICALS, DIV OF HILTI INC — CP 681-3"
4. Waste/Overflow Fitting — Nom 38 or 51 mm (1-1/2 or 2 in.) diam Schedule 40 cellular or solid core polyvinyl chloride (PVC) waste/overflow fitting installed through device. Thin wall PVC may be used if connection to drain piping is made above the firestop device (Item 2). When nom 51 mm (2 in.) diam waste/overflow fitting is used the FT Rating is 3/4 Hr. When nom 38 mm (1-1/2 in.) diam waste/overflow fitting is used the FT Rating is 2 Hr.
5. Drain Piping — Nom 38 or 51 mm (1-1/2 or 2 in.) diam Schedule 40 cellular or solid core polyvinyl chloride (PVC) pipe cemented together and secured to waste/overflow fitting with a compression coupling. Drain piping rigidly supported away from device with suitable hangers.
6. Packing Material — Nom 51 mm (2 in.) depth of 64 kg/m<sup>3</sup> (4 pcf) mineral wool batt insulation tightly packed into top of firestop device (Item 2) to completely fill annular space between pipe and device.

\* Indicates such products shall bear the UL or cUL Certification Mark for jurisdictions employing the UL or cUL Certification (such as Canada), respectively.



**Hilti Firestop Systems**

Reproduced by HILTI, Inc. Courtesy of  
Underwriters Laboratories, Inc.

June 29, 2015