



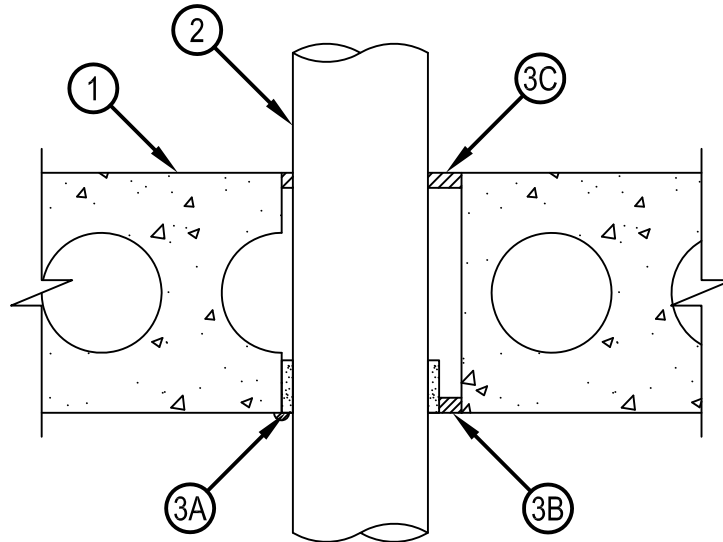
Classified by
Underwriters Laboratories, Inc.
to CAN/ULC-S115

System No. F-B-2008

F Rating — 2 Hr
FT Rating — 0 Hr
FH Rating — 0 Hr
FTH Rating — 0 Hr

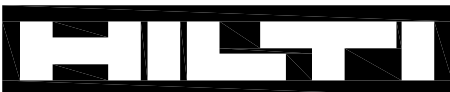


FB 2008



System tested with a pressure differential of 50 Pa between the exposed and the unexposed surfaces with the higher pressure on the exposed side.

1. Floor Assembly — Min 203 mm (8 in.) thick reinforced lightweight or normal weight (1600-2400 kg/m³ or 100-150 pcf) concrete. Floor assembly may also be constructed of any 203 mm (8 in.) thick UL Classified hollow-core Precast Concrete Units*. Max diameter of opening is 152 mm (6 in.).
See Precast Concrete Units (CFTV) and Concrete Blocks (CAZT) category in the Fire Resistance Directory for names of manufacturers.
2. Through Penetrants — One nonmetallic pipe to be installed eccentrically or concentrically within the firestop system. See Table under Item 3B for annular space between pipe and edge of opening. Pipe to be rigidly supported on both sides of floor assembly. The following types and sizes of nonmetallic pipes may be used:
 - A. Polyvinyl Chloride (PVC) Pipe — Nom 102 mm (4 in.) diam (or smaller) Schedule 40 solid or cellular core PVC pipe for use in closed (process or supply) or vented (drain, waste or vent) piping systems.
 - B. Chlorinated Polyvinyl Chloride (CPVC) Pipe — Nom 102 mm (4 in.) diam (or smaller) SDR13.5 CPVC pipe for use in closed (process or supply) piping systems.
 - C. Rigid Nonmetallic Conduit+ — Nom 102 mm (4 in.) diam (or smaller) Schedule 40 PVC conduit installed in accordance with the National Electrical Code, (NFPA No. 70).
 - D. Acrylonitrile Butadiene Styrene (ABS) Pipe — Nom 102 mm (4 in.) diam (or smaller) Schedule 40 cellular or solid core ABS pipe for use in closed (process or supply) or vented (drain, waste or vent) piping systems.
3. Firestop System — The firestop system shall consist of the following:
 - A. Fill, Void or Cavity Material* - Wrap Strip — See Table under Item 3B for min size of intumescent wrap strip. One layer of wrap strip tightly wrapped around the pipe with ends butted and held in place with integral tape. Wrap strip installed flush with bottom surface of floor.
HILTI CONSTRUCTION CHEMICALS, DIV OF HILTI INC — CP648-S- 1.5" US, CP648-S- 2" US, CP648-S- 3" US, CP648-S- 4" US
 - B. Fill, Void or Cavity Materials* — Sealant is applied within annular space between wrap strip and periphery of opening, flush with bottom surface of floor. For nom 4 in. (102 mm) diam pipes, min 13 mm (1/2 in.) thickness of fill material is required. For nom 102 mm (3 in.) diam or smaller pipes, min 6 mm (1/4 in.) thickness of fill material is required. An additional 6 mm (1/4 in.) bead of sealant to be installed at wrap strip/concrete interface at bottom surface of floor.
HILTI CONSTRUCTION CHEMICALS, DIV OF HILTI INC — FS-ONE Sealant or FS-ONE MAX Intumescent Sealant.



Hilti Firestop Systems

Reproduced by HILTI, Inc. Courtesy of
Underwriters Laboratories, Inc.
January 20, 2015

System No. F-B-2008



FB 2008

C. Fill, Void or Cavity Materials* — Sealant is applied within annular space between penetrant and periphery of opening, flush with top surface of floor. For nom 102 mm (4 in.) diam pipes, min 13 mm (1/2 in.) thickness of fill material is required. For nom 102 mm (3 in.) diam or smaller pipes, min 6 mm (1/4 in.) thickness of fill material is required.

HILTI CONSTRUCTION CHEMICALS, DIV OF HILTI INC — FS-ONE Sealant or FS-ONE MAX Intumescent Sealant, CP 601S Sealant, CFS-S SIL GG, CFS-S SIL SL or CP 604 Sealant

Nom Pipe Diam, mm (in.)	Wrap Strip	Wrap Strip Size,	Max Diam of Opening, mm (in.)	Annular Space, mm (in.)	
		thick x width, mm (in.)		Min	Max
38 (1-1/2)	CP648S - 1.5" US	5 x 25 (3/16 x 1)	64 (2-1/2)	5 (3/16)	11 (7/16)
51 (2)	CP 648S - 2" US	5 x 25 (3/16 x 1)	76 (3)	5 (3/16)	11 (7/16)
76 (3)	CP 648S - 3" US	5 x 44 (3/16 x 1-3/4)	102 (4)	5 (3/16)	8 (5/16)
102 (4)	CP 648S - 4" US	10 x 44 (3/8 x 1-3/4)	152 (6)	13 (1/2)	25 (1)

D. Packing Material — (not shown) — Min 13 mm (1/2 in.) thickness of 64 kg/m³ (4 pcf) mineral wool batt insulation firmly packed into annular space and recessed from the top surface of floor to accommodate the required thickness of fill material. Required only when CP 604 or CFS-S SIL SL Sealant is used.

* Indicates such products shall bear the UL or cUL Certification Mark for jurisdictions employing the UL or cUL Certification (such as Canada), respectively.



Hilti Firestop Systems

Reproduced by HILTI, Inc. Courtesy of
Underwriters Laboratories, Inc.
January 20, 2015