



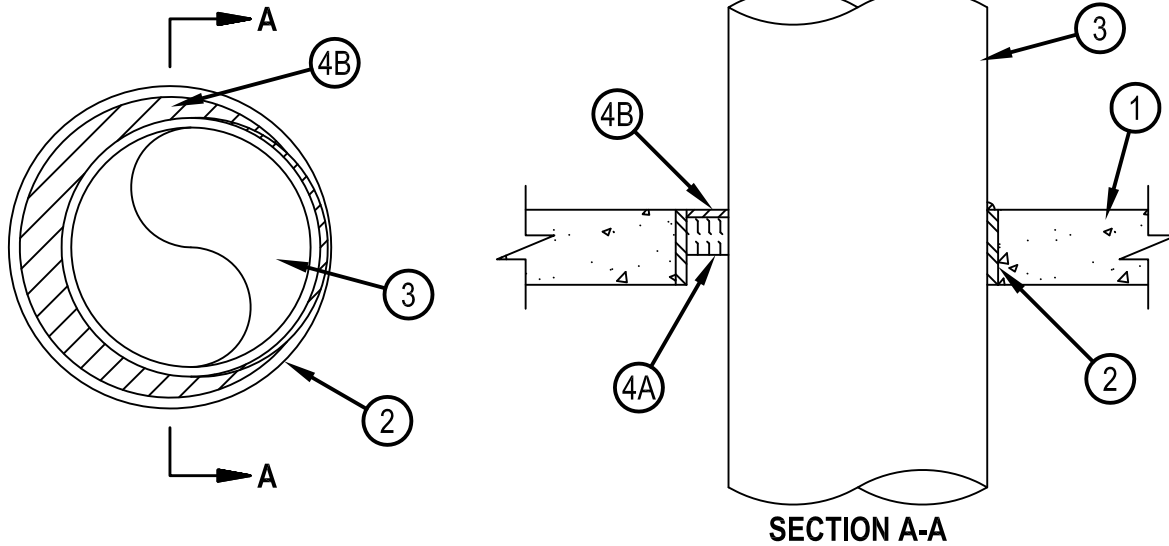
Classified by
Underwriters Laboratories, Inc.
to CAN/ULC-S115

System No. C-AJ-1612

F Rating — 2 Hr
FT Rating — 0 Hr
FH Rating — 0 Hr
FTH Rating — 0 Hr



CAJ 1612



1. Floor or Wall Assembly — Min 64 mm (2-1/2 in.) thick floor or wall made from reinforced lightweight or normal weight (1600-2400 kg/m³ or 100-150 pcf) concrete. Wall may also be constructed of any UL Classified Concrete Blocks*. Max diameter of opening is 254 mm (10 in.). See Concrete Blocks (CAZT) category in the Fire Resistance Directory for names of manufacturers.
2. Steel Sleeve — (Optional) — Nom 254 mm (10 in.) diam (or smaller) Schedule 10 (or heavier) steel pipe sleeve cast or grouted in place flush with floor or wall surfaces.
3. Through Penetrant — One metallic pipe, conduit or tubing to be installed either concentrically or eccentrically within the firestop system. The annular space between pipe, conduit or tubing and periphery of sleeve or opening shall be min 0 mm (point contact) to max 51 mm (2 in.). Pipe, conduit or tubing to be rigidly supported on both sides of floor or wall assembly. The following types and sizes of metallic pipes, conduits or tubing may be used:
 - A. Steel Pipe — Nom 203 mm (8 in.) diam (or smaller) Schedule 5 (or heavier) steel pipe.
 - B. Iron Pipe — Nom 203 mm (8 in.) diam (or smaller) cast or ductile iron pipe.
 - C. Conduit — Nom 102 mm (4 in.) diam (or smaller) steel electrical metallic tubing or nom 152 mm (6 in.) diam steel conduit.
 - D. Copper Tubing — Nom 102 mm (4 in.) diam (or smaller) Type L (or heavier) copper tubing.
 - E. Copper Pipe — Nom 102 mm (4 in.) diam (or smaller) Regular (or heavier) copper pipe.
4. Firestop System — The firestop system shall consist of the following:
 - A. Packing Material — Min 32 mm (1-1/4 in.) thickness of min 64 kg/m³ (4 pcf) mineral wool batt insulation firmly packed into opening as a permanent form. Packing material to be recessed from top surface of floor or from both surfaces of wall to accommodate the required thickness of fill material.
 - A1. Forming Material* - Strips — Min 32 mm (1-1/4 in.) thickness of mineral wool strips firmly packed into opening as a permanent form. Forming material to be recessed from top surface of floor or from both surfaces of wall to accommodate the required thickness of fill material. HILTI CONSTRUCTION CHEMICALS, DIV OF HILTI INC — CP 767 Speed Strips
 - B. Fill, Void or Cavity Materials* - Sealant — Min 6 mm (1/4 in.) thickness of fill material applied within the annulus, flush with top surface of floor or top of sleeve or with both surfaces of wall assembly or both ends of sleeve. At the point contact location between through penetrant and concrete/sleeve, a min 6 mm (1/4 in.) diam bead of fill material shall be applied at the concrete/sleeve/through penetrant interface on the top surface of floor and on both surfaces of wall. HILTI CONSTRUCTION CHEMICALS, DIV OF HILTI INC — CP 606 Flexible Firestop Sealant, FS-ONE Intumescent Sealant or FS-ONE MAX Intumescent Sealant

* Indicates such products shall bear the UL or cUL Certification Mark for jurisdictions employing the UL or cUL Certification (such as Canada), respectively.



Hilti Firestop Systems

Reproduced by HILTI, Inc. Courtesy of
Underwriters Laboratories, Inc.
May 17, 2017