



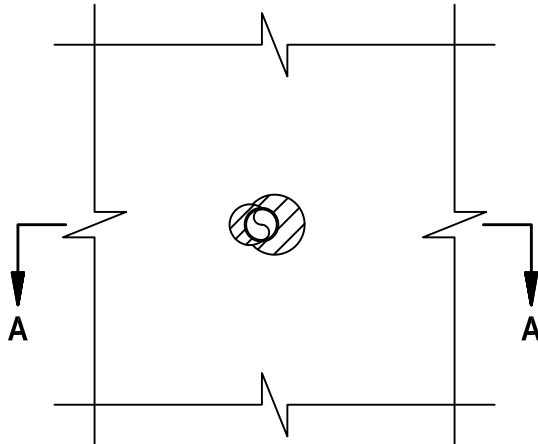
Classified by
Underwriters Laboratories, Inc.
to CAN/ULC-S115

System No. F-C-2045
F and FH Ratings — 1 Hr
FT and FTH Ratings — 0 Hr

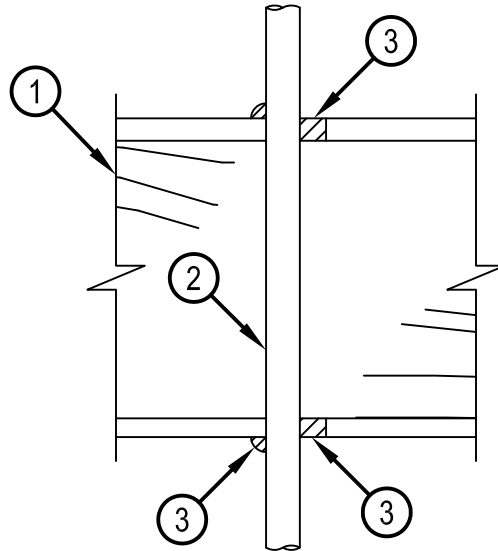


FC 2045

BOTTOM VIEW



SECTION A-A



System tested with a pressure differential of 50 Pa between the exposed and the unexposed surfaces with the higher pressure on the exposed side.

1. Floor-Ceiling Assembly — The 1 hr fire-rated solid or trussed lumber joist floor-ceiling assembly shall be constructed of the materials and in the manner specified in individual L500 Series Floor-Ceiling Designs in the UL Fire Resistance Directory.
 - A. Flooring System — Lumber or plywood subfloor with finish floor of lumber, plywood or Floor Topping Mixture* as specified in the individual floor-Ceiling Design. Max diam of floor opening is 51 mm (2 in.).
 - B. Wood Joists — 38 by 235 mm (2 by 10 in.) lumber joists spaced 410 mm (16 in.) OC. With 19 X 64 mm (1 by 3 in.) lumber bridging and with ends firestopped. As an alternate to lumber joists, nom 254 mm (10 in.) deep (or deeper) lumber, steel, or a combination lumber and steel joists, truss, or Structural Wood Members*, with bridging as required with ends firestopped.
 - C. Furring Channels — (Optional, Not Shown) - Resilient galv steel furring installed perpendicular to wood joists (item 1B) between wallboard (item 1D) and wood joists as required in the individual Floor-Ceiling Design.
 - D. Gypsum Board* — Nom 15.9 mm (5/8 in.) thick as specified in the individual Floor-Ceiling Design.
2. Cross-Linked Polyethylene (PEX) Tubing — Nom 25 mm (1 in.) diam (or smaller) SDR 9 PEX tubing. One nonmetallic pipe to be installed concentrically or eccentrically within the firestop system. Annular space between pipe and periphery of opening to be min 0 mm, (point contact), to max 22 mm (7/8 in.).
3. Fill, Void or Cavity Material* — Sealant - Min 19 mm (3/4 in.), thickness of fill material applied within the annulus, flush with top surface of floor. Min 16 mm (5/8 in.) thickness of fill material applied within the annulus, flush with bottom surface of ceiling. Min 13 mm (1/2 in.) diam bead of fill material applied at the pipe/floor and pipe/ceiling interface at point of contact locations on both sides of the assembly.
HILTI CONSTRUCTION CHEMICALS, DIV OF HILTI INC — FS-ONE Sealant or FS-ONE MAX Intumescent Sealant.

* Indicates such products shall bear the UL or cUL Certification Mark for jurisdictions employing the UL or cUL Certification (such as Canada), respectively.



Hilti Firestop Systems

Reproduced by HILTI, Inc. Courtesy of
Underwriters Laboratories, Inc.
January 20, 2015