



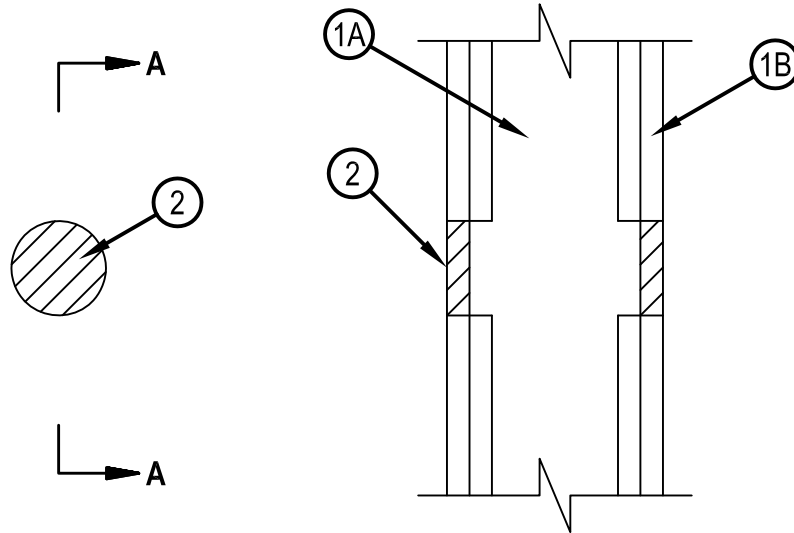
Classified by
Underwriters Laboratories, Inc.
to CAN/ULC-S115

System No. W-L-0005

F Ratings — 1 and 2 Hr (See Item 1)
FT Ratings — 1/4 and 1/2 Hr (See Item 1)
FH Rating — 0 Hr
FTH Rating — 0 Hr



WL 0005



SECTION A-A

1. Wall Assembly — The 1 or 2 hr fire-rated gypsum board/stud wall assembly shall be constructed of the materials and in the manner specified in the individual U300, U400 or V400 Series Wall and Partition Designs in the Fire Resistance Directory and shall include the following construction features:
 - A. Studs — Wall framing shall consist of either wood studs or channel shaped steel studs. Wood studs to consist of 51 by 102 mm (2 by 4 in.) lumber spaced max 406 mm (16 in.) OC. Steel studs to be min 89 mm (3-1/2 in.) wide, fabricated from min 25 MSG galvanized steel, spaced max 610 mm (24 in.) OC.
 - B. Gypsum Board* — Nom 16 mm (5/8 in.) thick with square or tapered edges. The gypsum board type, number of layers and sheet orientation shall be as specified in the individual Wall and Partition Design. Max diam of opening is 67 mm (2-5/8 in.).
The hourly F Rating of the firestop system is equal to the hourly fire rating of the wall assembly in which it is installed. The hourly FT Rating of the firestop system is 1/4 hr and 1/2 hr when installed in 1 hr and 2 hr fire rated wall assemblies, respectively.
 2. Fill, Void or Cavity Material* - Sealant — Min 16 mm (5/8 in.) thickness of fill material applied to fill the opening, flush with each side of wall. HILTI CONSTRUCTION CHEMICALS, DIV OF HILTI INC — FS-ONE Sealant or FS-ONE MAX Intumescent Sealant.
- * Indicates such products shall bear the UL or cUL Certification Mark for jurisdictions employing the UL or cUL Certification (such as Canada), respectively.



Hilti Firestop Systems

Reproduced by HILTI, Inc. Courtesy of
Underwriters Laboratories, Inc.
January 23, 2015