



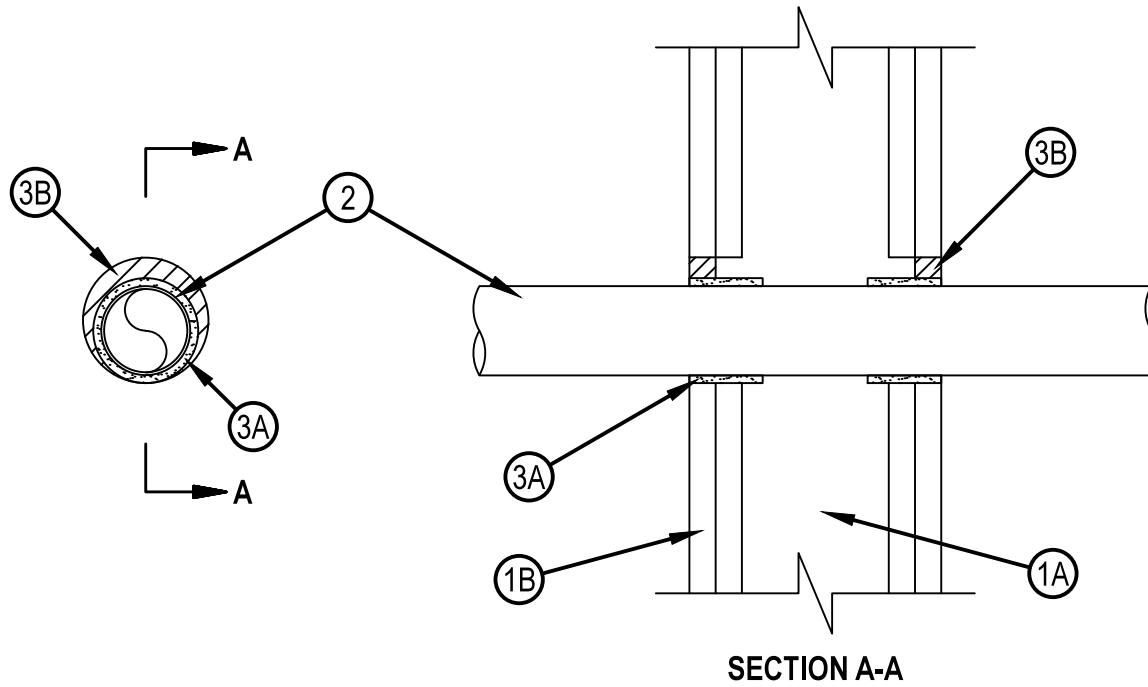
Classified by
Underwriters Laboratories, Inc.
to CAN/ULC-S115

System No. W-L-2057

F Ratings — 1 and 2 Hr (See Item 1)
FT Ratings — 0 and 1/4 Hr (See Item 1)
FH Rating — 0 Hr
FTH Rating — 0 Hr



WL 2057



1. Wall Assembly — The 1 or 2 hr fire-rated gypsum board/stud wall assembly shall be constructed of the materials and in the manner specified in the individual U300, U400, V400 or W400 Series Wall and Partition Design in the UL Fire Resistance Directory and shall include the following construction features:
 - A. Studs — Wall framing may consist of either wood studs or steel channel studs. Wood studs to consist of nom 51 by 102 mm (2 by 4 in.) lumber spaced 406 mm (16 in.) OC. Steel studs to be min 89 mm (3-1/2 in.) wide and spaced max 610 mm (24 in.) OC.
 - B. Gypsum Board* — Thickness, type, number of layers and fasteners as specified in the individual Wall and Partition Design. Wall opening to be min 13 mm (1/2 in.) to max 25 mm (1 in.) larger than diam of PEX tubing (Item 2). Max diam of opening is 76 mm (3 in.).

The hourly F Ratings of the firestop system are equal to the hourly fire rating of the wall assembly in which it is installed. The hourly FT Ratings of the firestop system are 0 hr in 1 hr fire rated walls and 1/4 hr in 2 hr fire rated walls.
2. Cross Linked Polyethylene (PEX) Tubing — Nom 51 mm diam (or smaller) SDR9 PEX tubing for use in closed (process or supply) piping systems. One tube to be installed within the firestop system. Tube to be rigidly supported on both sides of wall assembly. The annular space shall be min 4.8 mm (3/16 in.) to max 19 mm (3/4 in.).
3. Firestop System — The firestop system shall consist of the following:
 - A. Fill, Void or Cavity Material* - Wrap Strip — Nom 4.8 mm (3/16 in.) by 46 mm (1-3/4 in.) wide intumescent wrap strip. Single layer of wrap strip wrapped around the through penetrant with the ends butted and held in place by means of tape. The wrap strip is slid along the through penetrant into annulus such that end is flush with wall surface. Wrap strip installed on each side of wall.
HILTI CONSTRUCTION CHEMICALS, DIV OF HILTI INC — CP 648E Wrap Strip
 - B. Fill, Void or Cavity Material* - Sealant — Min 16 mm (5/8 in.) depth of sealant shall be installed in the annular space between the wrap strip and the edge of the opening flush with each surface of the wall.
HILTI CONSTRUCTION CHEMICALS, DIV OF HILTI INC — FS-ONE Sealant or FS-ONE MAX Intumescent Sealant.

* Indicates such products shall bear the UL or cUL Certification Mark for jurisdictions employing the UL or cUL Certification (such as Canada), respectively.



Reproduced by HILTI, Inc. Courtesy of
Underwriters Laboratories, Inc.
January 26, 2015