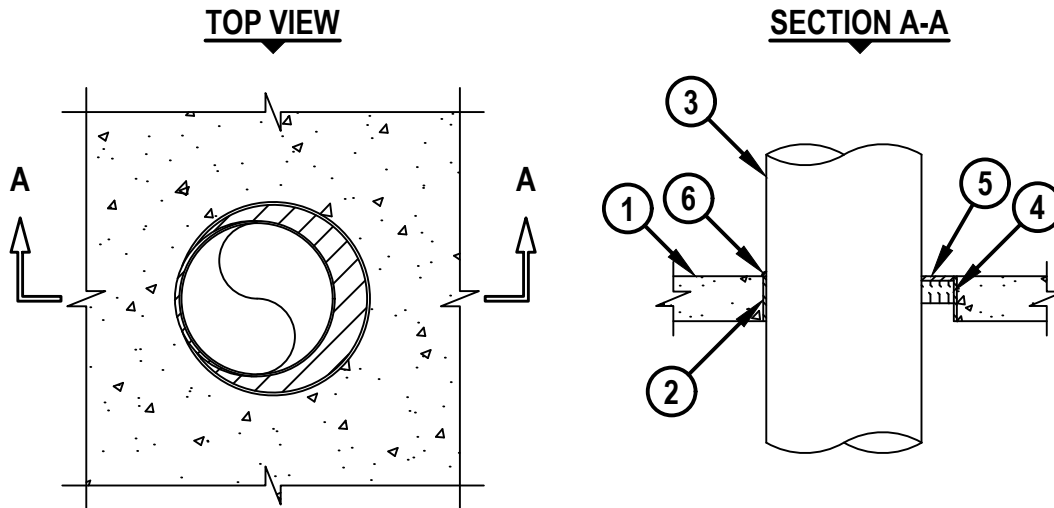


# METAL PIPE THROUGH CONCRETE FLOOR/WALL OR BLOCK WALL ASSEMBLY

F-RATING = 2-HR.  
 FT, FH, AND FTH-RATINGS = 0-HR.



cUL CAJ1612d.051517

1. CONCRETE FLOOR OR WALL ASSEMBLY (2-HR. FIRE-RATING) :
  - A. LIGHTWEIGHT OR NORMAL WEIGHT CONCRETE FLOOR OR WALL (MINIMUM 2-1/2" THICK).
  - B. ANY UL/cUL CLASSIFIED CONCRETE BLOCK WALL.
2. [OPTIONAL] MAXIMUM 10" NOMINAL DIAMETER STEEL PIPE SLEEVE (SCHEDULE 10 OR HEAVIER).
3. PENETRATING ITEM TO BE ONE OF THE FOLLOWING :
  - A. MAXIMUM 8" NOMINAL DIAMETER STEEL PIPE (SCHEDULE 5 OR HEAVIER).
  - B. MAXIMUM 8" NOMINAL DIAMETER CAST OR DUCTILE IRON PIPE.
  - C. MAXIMUM 4" NOMINAL DIAMETER STEEL CONDUIT OR EMT.
  - D. MAXIMUM 4" NOMINAL DIAMETER COPPER PIPE OR TUBING.
4. MINIMUM 1-1/4" THICKNESS MINERAL WOOL (MIN. 4 PCF DENSITY) TIGHTLY PACKED AND RECESSED TO ACCOMMODATE SEALANT (SEE NOTE NO. 3 BELOW).
5. MINIMUM 1/4" DEPTH HILTI CP 606 FLEXIBLE FIRESTOP SEALANT OR HILTI FS-ONE MAX INTUMESCENT FIRESTOP SEALANT.
6. MINIMUM 1/4" BEAD HILTI CP 606 FLEXIBLE FIRESTOP SEALANT OR HILTI FS-ONE MAX INTUMESCENT FIRESTOP SEALANT APPLIED AT POINT OF CONTACT.

**NOTES :**

1. MAXIMUM DIAMETER OF OPENING = 10".
2. ANNULAR SPACE = MINIMUM 0", MAXIMUM 2".
3. AS AN ALTERNATIVE TO MINERAL WOOL (ITEM 4), MINIMUM 1-1/4" THICKNESS HILTI CP 767 SPEED STRIPS MAY BE USED. HILTI CP 767 SPEED STRIPS MUST BE TIGHTLY PACKED AND RECESSED TO ACCOMMODATE SEALANT.
4. MINIMUM 1/4" DEPTH HILTI CP 606 FLEXIBLE FIRESTOP SEALANT OR HILTI FS-ONE MAX INTUMESCENT FIRESTOP SEALANT IS REQUIRED ON EACH SIDE OF A WALL ASSEMBLY.



HILTI, Inc.  
 Plano, Texas USA (800) 879-8000

Sheet	1 of 1
Scale	3/32" = 1"
Date	May 15, 2017

Drawing No.  
**cUL**  
**CAJ1612d**