

cUL SYSTEM NO. W-L-5011



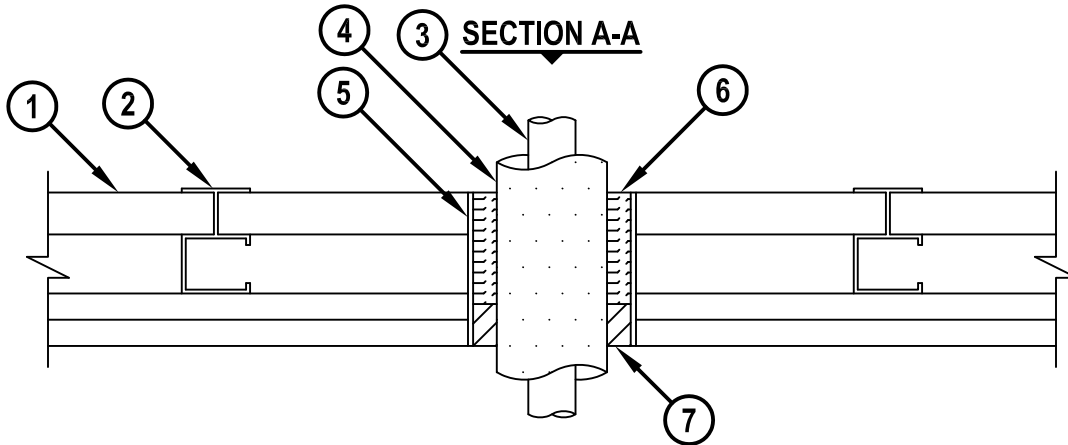
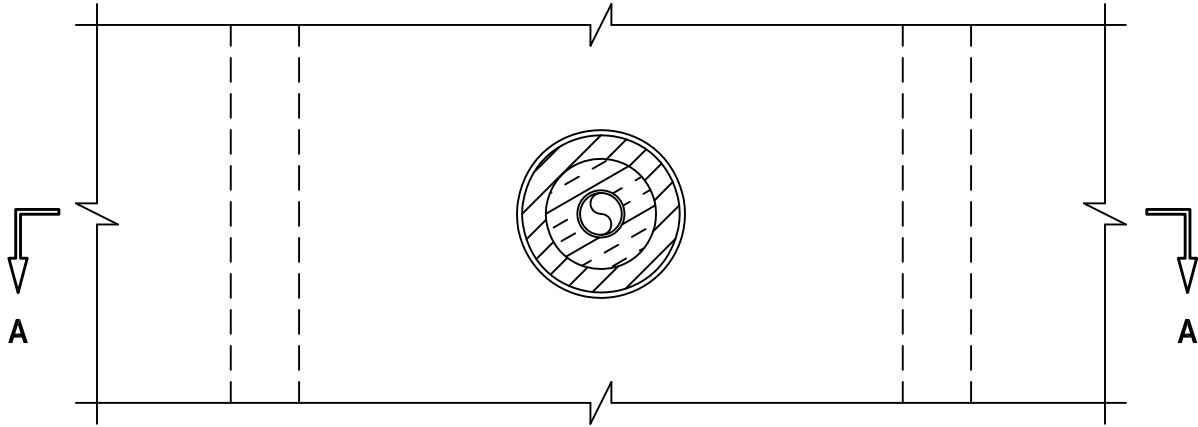
INSULATED METAL PIPE THROUGH GYPSUM SHAFT WALL ASSEMBLY

F-RATING = 1-HR. OR 2-HR.

FT-RATING = 1/4-HR.

FH AND FTH-RATINGS = 0-HR.

FRONT VIEW



1. GYPSUM SHAFT WALL ASSEMBLY (UL/cUL CLASSIFIED U400 SERIES) (1-HR. OR 2-HR. FIRE-RATING).
2. "C-T" SHAPED STEEL STUDS (1-5/8" WIDE x 2-1/2" DEEP, MINIMUM 25 GA.) SPACED MAXIMUM 24" C/C.
3. MAXIMUM 1" NOMINAL DIAMETER COPPER PIPE.
4. MAXIMUM 3/4" THICK AB/PVC FLEXIBLE FOAM PIPE INSULATION.
5. MAXIMUM 4" DIAMETER SHEET METAL SLEEVE (MINIMUM 28 GA.) HAVING MINIMUM 1" OVERLAP ALONG LONGITUDINAL SEAM.
6. MINIMUM 2" OR 2-1/2" THICKNESS MINERAL WOOL (MINIMUM 4 PCF DENSITY) TIGHTLY PACKED AND RECESSED ON ONE SIDE OF WALL FOR 1-HR. OR 2-HR. FIRE-RATED WALLS RESPECTIVELY.
7. MINIMUM 1" DEPTH HILTI FS-ONE MAX OR FS-ONE INTUMESCENT FIRESTOP SEALANT.

NOTES : 1. MAXIMUM DIAMETER OF OPENING = 4".
 2. ANNULAR SPACE = MINIMUM 1/4", MAXIMUM 1-1/8".

cUL WL5011b.011715



HILTI, Inc.
Tulsa, Oklahoma USA (800) 879-8000

Sheet	1 of 1
Scale	7/32" = 1"
Date	Jan. 17, 2015

Drawing No.
cUL
WL5011b