

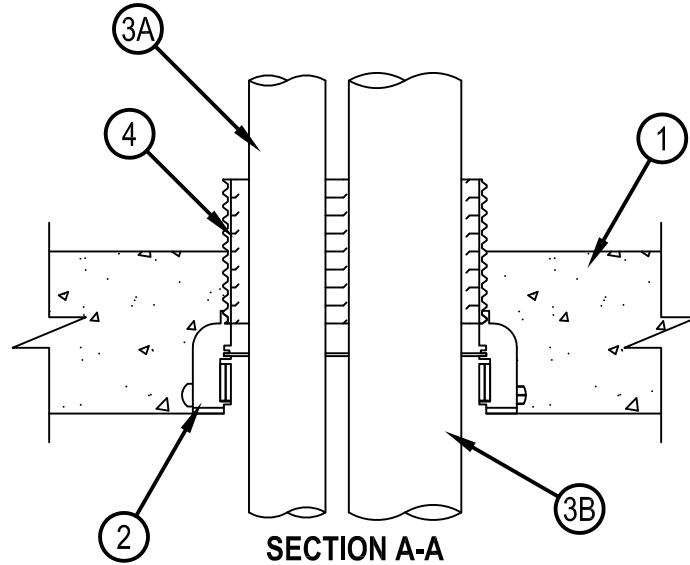
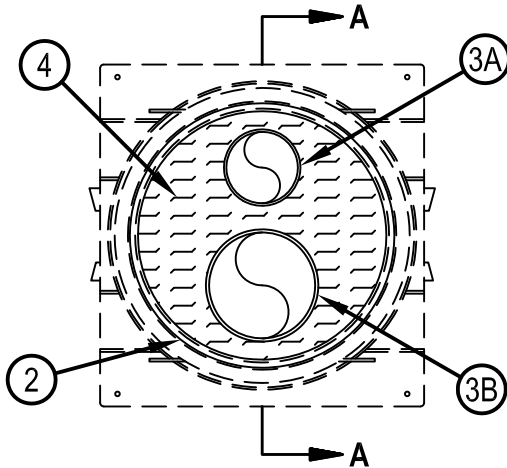


Classified by
Underwriters Laboratories, Inc.
to UL 1479 and CAN/ULC-S115

System No. F-A-1023

FA 1023

ANSI/UL1479 (ASTM E814)	CAN/ULC S115
F Rating — 2 Hr	F Rating — 2 Hr
T Rating — 1/2 Hr	FT Rating — 1/2 Hr
	FH Rating — 2 Hr
	FTH Rating — 1/2 Hr



1. Floor or Wall Assembly — Min 4-1/2 in. (114 mm) thick reinforced lightweight or normal weight (100-150 pcf or 1600-2400 kg/m³) concrete.
- 1A. Steel Floor Unit/ Floor Assembly — (Not Shown)- As an alternate to Item 1, the floor assembly may consist of a fluted steel floor unit/ concrete floor assembly. The floor assembly shall be constructed of the materials and in the manner described in the individual Floor-Ceiling Design in the Fire Resistance Directory and shall include the following construction features:
 - A. Concrete — Min 4-1/2 in. (114 mm) thick reinforced lightweight or normal weight (100-150 pcf or 1600-2400 kg/m³) concrete, as measured from the top plane of the floor units.
 - B. Steel Floor and Form Units* — Composition or non-composite 1-1/2 in. to 3 in. (38 to 76 mm) deep fluted galv steel units as specified in the individual Floor-Ceiling Design.
2. Firestop Device* — Cast in place firestop device permanently embedded during concrete placement or grouted in concrete floor assembly in accordance with accompanying installation instructions with a maximum 2 in. (51 mm) projection above the top surface of the concrete.
HILTI CONSTRUCTION CHEMICALS, DIV OF HILTI INC — CP 680-75/2.5"N, CP 680-110/4"N, CP 680-160/6"N, CP 682-75/2.5", CP 682-110/4", CP 680-M 2", CP 680-M 3", CP 680-M 4", CP 680-M 6", CP 680-P 2", CP 680-P 3", CP 680-P 4", CP 680-P 6", CP 680-PX 2", CP 680-PX 3"
3. Through Penetrants — A max of one nom 3 in. (76 mm) diam (or smaller) and one nom 2 in. (51 mm) diam (or smaller) metallic pipes, tubes or conduits to be installed within the firestop system. The annular space between the penetrants shall be min 1/8 in. (3 mm). The annular space between penetrants and the device shall be min 1/2 in. (13 mm) to max 2 in. (51 mm). Penetrants to be rigidly supported on both sides of floor assembly. The following metallic pipes, tubes or conduits may be used.
 - A. Steel Conduit — Steel electrical metallic tubing or rigid steel conduit.
 - B. Steel Pipe — Schedule 5 (or heavier) steel pipe.
 - C. Iron Pipe — Cast or ductile iron pipe.
 - D. Copper Pipe — Regular (or heavier) copper pipe.
 - E. Copper Tubing — Type L (or heavier) copper tubing.
4. Packing Material — Min 4 in. (102 mm) thickness of min 4 pcf (64 kg/m³) mineral wool batt insulation firmly packed into device completely filling the space around conduits to fullest depth allowed by the device.

* Indicates such products shall bear the UL or cUL Certification Mark for jurisdictions employing the UL or cUL Certification (such as Canada), respectively.



Hilti Firestop Systems

Reproduced by HILTI, Inc. Courtesy of
Underwriters Laboratories, Inc.
June 29, 2015