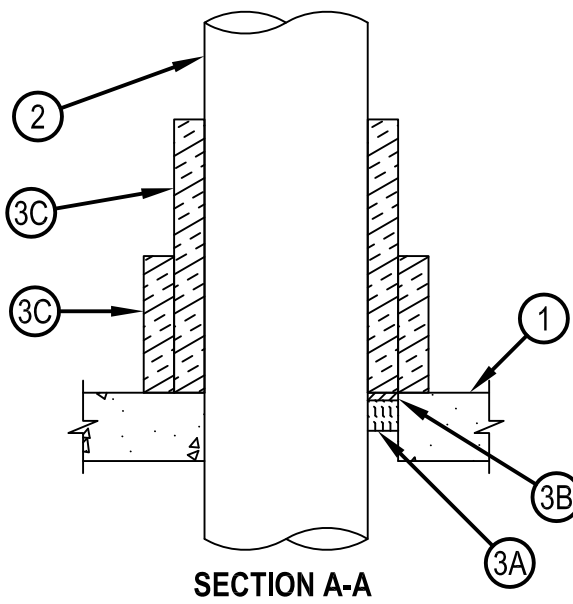


System No. F-A-1105



Classified by
Underwriters Laboratories, Inc.
to UL 1479 and CAN/ULC-S115

ANSI/UL1479 (ASTM E814)	CAN/ULC S115
F Rating - 2 Hr	F Rating - 2 Hr
T Rating - 2 Hr	FT Rating - 2 Hr
L Rating At Ambient - Less Than 1 CFM/sq ft	FH Rating - 2 Hr
L Rating At 400 F - 4 CFM/sq ft	FTH Rating - 2 Hr
W Rating - Class 1 (See Item 3B)	L Rating At Ambient - Less Than 1 CFM/sq ft
	L Rating At 400 F - 4 CFM/sq ft



1. Floor Assembly — Min 4-1/2 in. (114 mm) thick reinforced lightweight or normal weight (100-150 pcf or 1600-2400 kg/m³) concrete. As an alternate, any min 2 hr fire rated D700, D800 or D900 Series Floor-Ceiling Design in the UL Fire Resistance Directory having a min 2-1/2 in. (64 mm) thickness of lightweight or normal weight (100-150 pcf or 1600-2400 kg/m³) concrete topping over the steel deck may be used. Max diam of opening is 12-3/4 in. (324 mm).
2. Through-Penetrant — One metallic pipe installed concentrically or eccentrically within opening. Annular space between penetrant and periphery of opening shall be min of 0 in. (point contact) to max 2 in. (51 mm). Penetrant to be rigidly supported on both sides of floor assembly. The following types and sizes of penetrants may be used:
 - A. Steel Pipe — Nom 10 in. (254 mm) diam (or smaller) Schedule 40 (or heavier) steel pipe.
 - B. Iron Pipe — Nom 10 in. (254 mm) diam (or smaller) cast or ductile iron pipe.
 - C. Conduit — Nom 4 in. (102 mm) diam (or smaller) steel electrical metallic tubing or nom 6 in. (152 mm) diam (or smaller) rigid steel conduit.



Hilti Firestop Systems

Reproduced by HILTI, Inc. Courtesy of
Underwriters Laboratories, Inc.
January 15, 2015

3. Firestop System — The firestop system shall consist of the following:

A. Packing Material — Min 2 in. (51 mm) thickness of min 4 pcf (64 kg/m³) mineral wool batt insulation firmly packed into opening as a permanent form. When CP 604, CFS-S SIL GG or CFS-S SIL SL sealant is used (see Item 3B), min thickness of packing material is 4 in. (102 mm) and min thickness of floor is 4-1/2 in. (114 mm). Packing material to be recessed from top surface of floor to accommodate the required thickness of fill material.

B. Fill, Void or Cavity Materials* - Sealant — Min 1/2 in. (13 mm) thickness of sealant applied within the annulus, flush with top surface of floor.
HILTI CONSTRUCTION CHEMICALS, DIV OF HILTI INC — FS-ONE Sealant, FS-ONE MAX Intumescent Sealant or CP 604 Self-Leveling Firestop Sealant, CFS-S SIL GG or CFS-S SIL SL Sealant

W Rating applies only when CP 604, CFS-S SIL GG or CFS-S SIL SL Sealant is used.

C. Duct Wrap Material* — Encapsulated duct wrap tightly wrapped around penetrant to extend 24 in. (610 mm) above the floor for penetrants of nom 4 in. (102 mm) diam or smaller, and 36 in. (914 mm) above floor for penetrants greater than a nom 4 in. (102 mm) diam. An additional layer of encapsulated duct wrap tightly wrapped around the first layer of duct wrap to extend 12 in. (305 mm) (914 mm) above floor. All longitudinal seams of both layers of duct wrap and joints between layers of duct wrap are sealed with foil tape. One of the following types and thicknesses of duct wrap may be used:

C1. Nom 1-1/2 in. (38 mm) or 2 in. (51 mm) thick encapsulated duct wrap.

UNIFRAX I L L C — Fyrewrap Duct Insulation or FireWrap Duct 1.5 Insulation

C2. Nom 1-1/2 in. (38 mm) thick encapsulated duct wrap.

THERMAL CERAMICS INC — FireMaster FastWrap XL Duct Insulation

* Indicates such products shall bear the UL or cUL Certification Mark for jurisdictions employing the UL or cUL Certification (such as Canada), respectively.

