

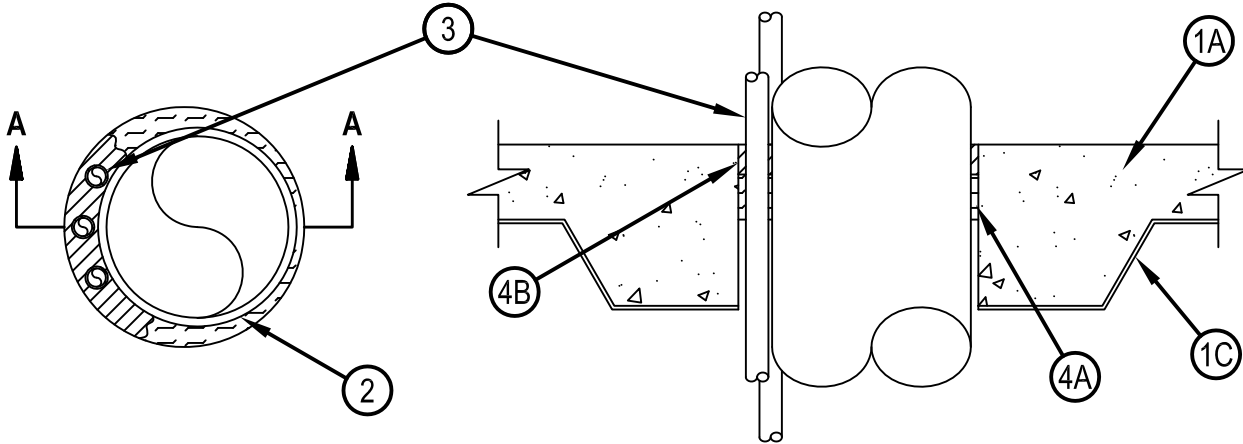


Classified by
Underwriters Laboratories, Inc.
to UL 1479 and CAN/ULC-S115

System No. F-A-8004

FA 8004

ANSI/UL1479 (ASTM E814)	CAN/ULC S115
F Rating — 2 Hr	F Rating — 2 Hr
T Rating — 0 Hr	FT Rating — 0 Hr
	FH Rating — 2 Hr
	FTH Rating — 0 Hr



SECTION A-A

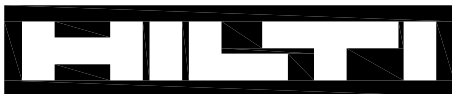
- 1. Floor Assembly** — The fire-rated concrete and steel floor assembly shall be constructed of the materials and in the manner specified in the individual D900 Series designs in the UL Fire Resistance Directory and as summarized below:

 - Normal Weight or Lightweight Concrete — Min 2-1/2 in. (64 mm) thick reinforced lightweight or normal weight (100-150 pcf or 1600-2400 kg/m³) concrete.
 - Welded Wire Fabric — 6x6-W1.4xW1.4.
 - Steel Floor and Form Units — Composite or noncomposite 1-1/2 in. (38 mm) to 3 in. (76 mm) deep galv units as specified in the individual Floor-Ceiling designs. Max diam of opening is 8 in. (203 mm).
- 2. Steel Tube** — Nom 6 in. (152 mm) diam (or smaller) 16 MSG steel tube installed eccentrically within the opening. The annular space between the tube and the periphery of the opening shall be min 1/4 in. (6 mm) to max 1-3/4 in. (44 mm). Tube to be rigidly supported on both sides of floor or wall assembly.
- 3. Cables** — Max four 3/8 in. (9.5 mm) diam 2 pair 22 AWG foil shielded plenum rated communication cables with polyvinyl chloride (PVC) insulation and jacket. Min separation between cables and periphery of opening shall be 1/4 in. (6 mm). Separation between cables and tube shall be min 0 in. (point contact) to max 1 in. (25 mm). Cables to be rigidly supported on both sides of floor or wall assembly.
- 4. Firestop System** — The firestop system shall consist of the following:

 - Packing Material** — Min 1-1/2 in. (38 mm) thickness of min 4 pcf (64 kg/m³) mineral wool batt insulation firmly packed into opening as a permanent form. Packing material to be recessed from top surface of floor to accommodate the required thickness of fill material.
 - Fill, Void or Cavity Materials* - Sealant** — Min 1 in. (25 mm) thickness of fill material applied within the annulus, flush with top surface of floor.

HILTI CONSTRUCTION CHEMICALS, DIV OF HILTI INC — FS-ONE Sealant or FS-ONE Intumescent Sealant.

* Indicates such products shall bear the UL or cUL Certification Mark for jurisdictions employing the UL or cUL Certification (such as Canada), respectively.



Hilti Firestop Systems

Reproduced by HILTI, Inc. Courtesy of
Underwriters Laboratories, Inc.
January 20, 2015