

All loading and design criteria supplied by customer is assumed accurate. Only the stated Design Assumptions were considered, and must be verified by the responsible Engineer of Record (EOR). The basis of Hilti component and connection design is the published data in the current Hilti Technical Guide, including material and cross-section properties, allowable load values, factors of safety, methods of calculation, and limiting factors. The EOR must verify suitability for any specific application, and the capacity of the supportive structure to receive the shown configuration and associated reaction loads. Modification to components and/or design may alter performance and must be evaluated by the EOR.

TYPICAL DETAIL TYPE:  
**CABLE TRAY SUPPORT**

TYPICAL DETAIL DESCRIPTION:  
**T - POST**

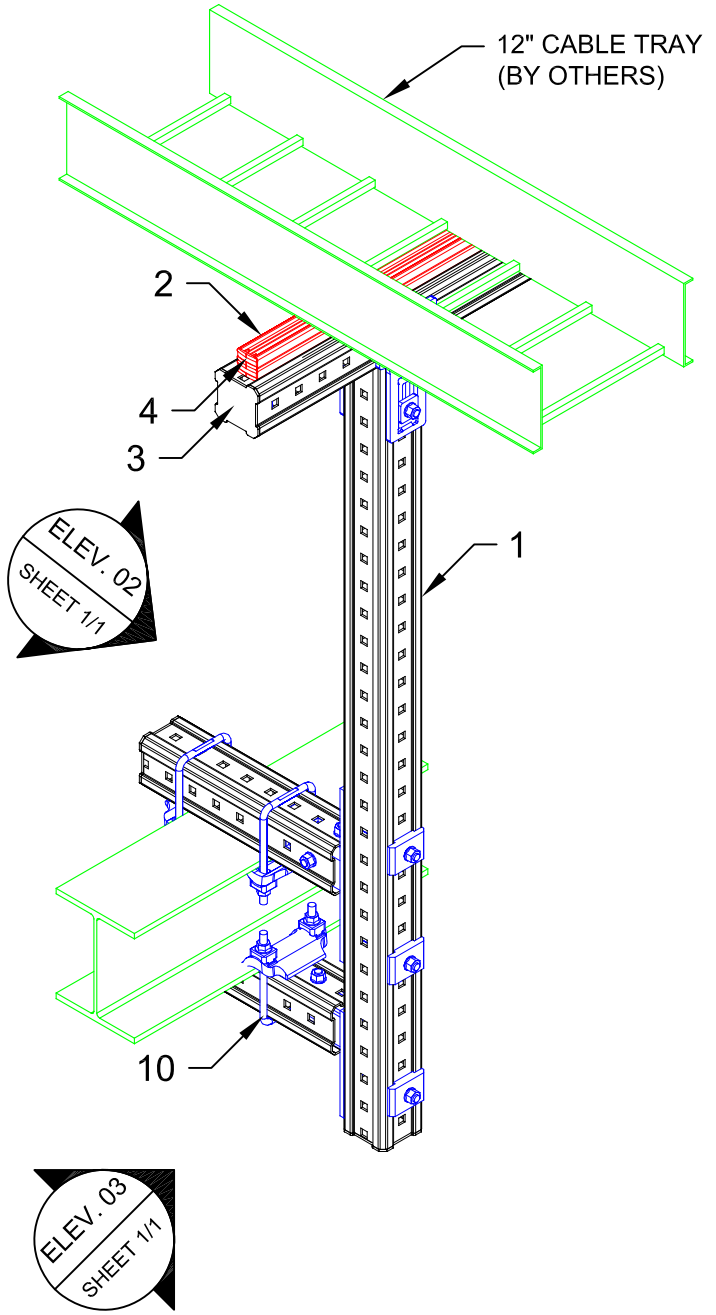
DESIGNED BY: KL	REVIEWED BY: AJV
--------------------	---------------------

DRAWN BY: BAP	ISSUE DATE: 04 DEC 14
------------------	--------------------------

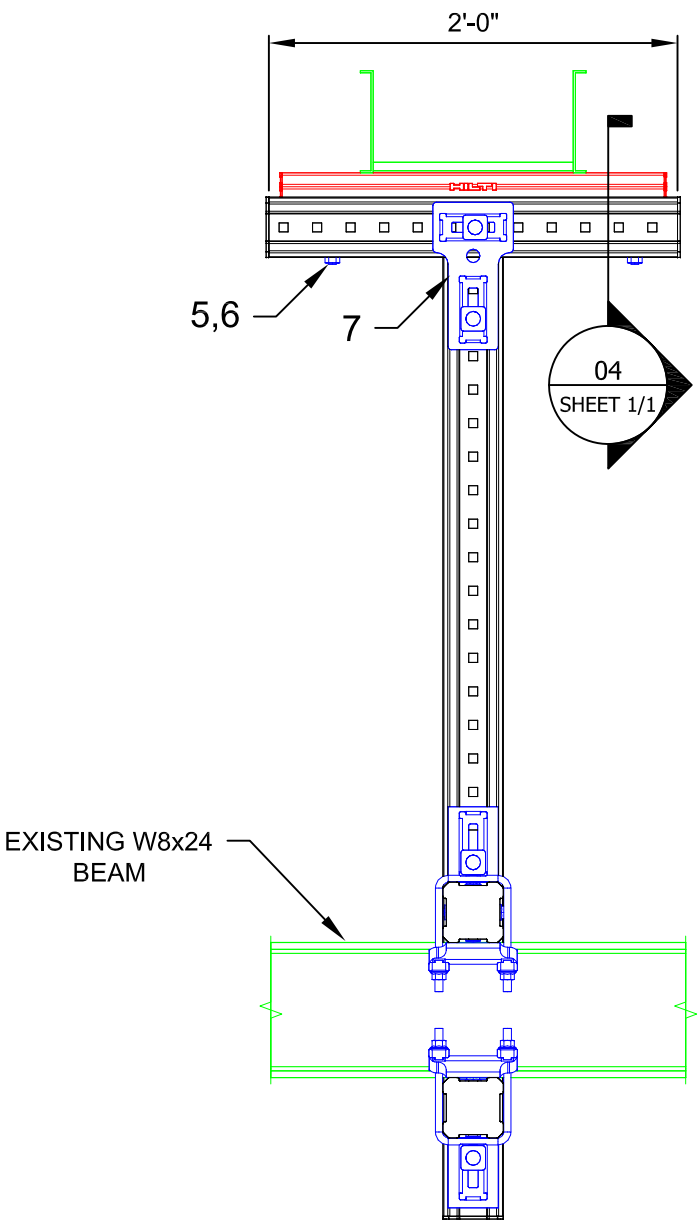
NO.	DESCRIPTION:	DATE:
A	ORIGINAL ISSUE	04 DEC 14

TYPICAL DETAIL NOMENCLATURE:  
**CT-TP01-S**

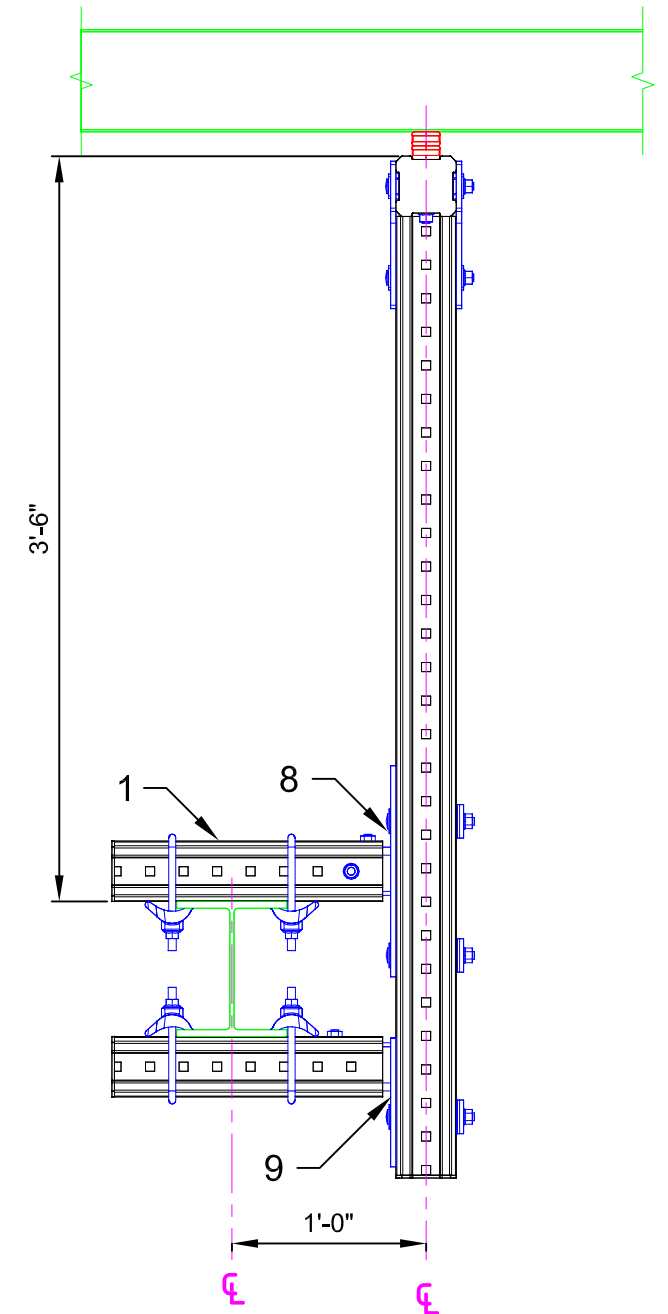
DRAWING NUMBER: <b>01</b>	SHEET: <b>1/1</b>
------------------------------	----------------------



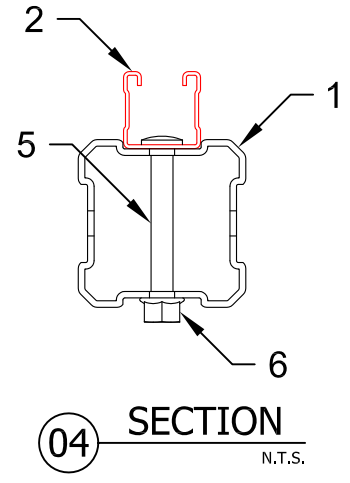
**01 ISOMETRIC**  
N.T.S.



**02 ELEVATION**  
N.T.S.



**03 ELEVATION**  
N.T.S.



**04 SECTION**  
N.T.S.

**NOTE(S):**  
 1. PRELIMINARY NOT FOR CONSTRUCTION  
 2. DESIGN ASSUMPTIONS:  
 a. DESIGN LOADS (STATIC, U.N.O.):  
 DL: MAX. 500 lbs.  
 WL: MAX. 150 lbs. (LONGITUDINAL)  
 EQ: MAX. 125 lbs. (TRANSVERSE)  
 b. BUILDING CODE: NOT SPECIFIED  
 c. CORROSION RESISTANCE REQ'D.: HDG / EG  
 d. MAX. SUPPORT SPACING = REFER TO CONSTRUCTION PLANS  
 2. REFER TO COMPONENT MANUFACTURER'S IFUs FOR REQUIRED INSTALLATION INFO.  
 3. E.O.R. MUST BE NOTIFIED OF ANY DEVIATIONS FROM EXISTING/ NEW SUBSTRATE CONDITIONS SHOWN HEREIN TO VALIDATE ACCEPTANCE OF THIS HILTI DESIGN PRIOR TO INSTALLATION.

\\hilti.com\US\TEAMS\installations\Projects\TYPICAL LIBRARY\CABLE TRAY (CT)\CAD\CT-TP01-S.dwg, 12/23/2014 2:33:05 PM

No.	Unit Qty	Unit	Description	Box Qty	# Boxes Needed	Item No.
1	AS REQ'D	EA	GIRDER MI-90 3M	1	AS REQ'D	304798
2	AS REQ'D	EA	STRUT HS-158-12/PG 10'	1	AS REQ'D	407555
3	5	EA	GIRDER END CAP MIA-EC90	25	1	432077
4	4	EA	CHANNEL END CAP MEK RED	50	1	244886
5	2	EA	ONEHAND SCREW MIA-OH90	10	1	304889
6	2	EA	MI HEX NUT M12-F-SL-WS 3/4"	100	1	382897
7	1	PR	CONNECTOR MIC-T	2	1	304807
8	1	EA	CONNECTOR MIC-90-L	2	1	304805
9	1	EA	CONNECTOR MIC-90-U	4	1	304803
10	4	EA	BEAM CLAMP MI-DGC 90	4	1	233860