

PLASTIC PIPE THROUGH WOOD FLOOR/CEILING ASSEMBLY

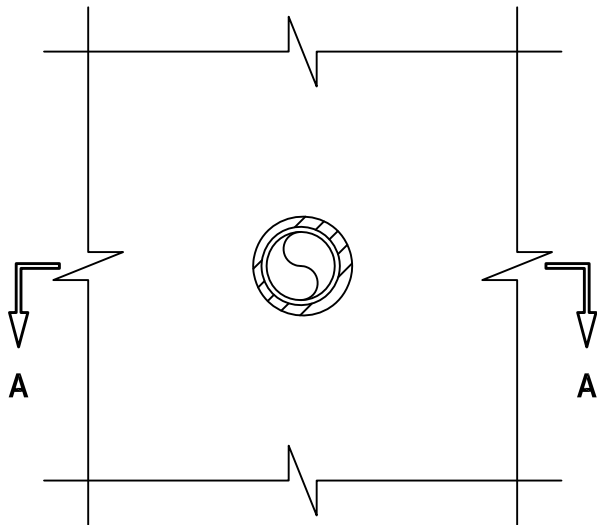
F-RATING = 1-HR.

FT, FH, AND FTH-RATINGS = 0-HR.

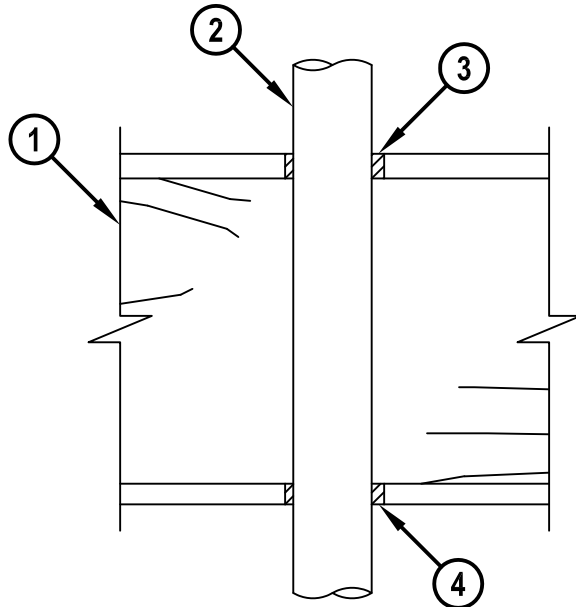
NOTE : TESTED WITH A 50 Pa PRESSURE DIFFERENTIAL

cUL FC2416b.011715

BOTTOM VIEW



SECTION A-A



1. WOOD FLOOR/CEILING ASSEMBLY (UL CLASSIFIED L500 SERIES) (1-HR. FIRE-RATING).
2. PENETRATING ITEM TO BE ONE OF THE FOLLOWING (SEE NOTE NO. 3 BELOW) :
 - A. MAXIMUM 2" NOMINAL DIAMETER PVC PLASTIC PIPE (CELLULAR OR SOLID CORE).
 - B. MAXIMUM 2" NOMINAL DIAMETER ABS PLASTIC PIPE (CELLULAR OR SOLID CORE).
 - C. MAXIMUM 2" NOMINAL DIAMETER CPVC PLASTIC PIPE (SDR 11 OR 13.5).
 - D. MAXIMUM 2" NOMINAL DIAMETER AQUARISE CPVC PLASTIC PIPE (SDR 11) MANUFACTURED BY IPEX, INC. (CLOSED PIPING SYSTEM ONLY).
 - E. MAXIMUM 1-1/2" NOMINAL DIAMETER PEX TUBING (CLOSED PIPING SYSTEM ONLY).
3. MINIMUM 3/4" DEPTH HILTI FS-ONE MAX OR FS-ONE INTUMESCENT FIRESTOP SEALANT.
4. MINIMUM 5/8" DEPTH HILTI FS-ONE MAX OR FS-ONE INTUMESCENT FIRESTOP SEALANT.

NOTES : 1. DIAMETER OF OPENING TO BE NOMINAL 5/8" LARGER THAN DIAMETER OF THROUGH PENETRANT.
 2. ANNULAR SPACE = MINIMUM 1/4", MAXIMUM 3/8".
 3. CLOSED OR VENTED PIPING SYSTEM (PVC AND ABS = SCHEDULE 40; CPVC = SDR 11 OR 13.5).
 4. CHASE WALL [NOT SHOWN, OPTIONAL] - THE THROUGH PENETRANT MAY BE ROUTED THROUGH A RATED OR NON-RATED GYPSUM CHASE WALL.



HILTI, Inc.
 Tulsa, Oklahoma USA (800) 879-8000

Sheet	1 of 1
Scale	11/64" = 1"
Date	Jan. 17, 2015

Drawing No.

cUL
FC2416b