



Classified by  
Underwriters Laboratories, Inc.  
to UL 1479 and CAN/ULC-S115

# System No. F-B-1029

F Rating — 3 Hr

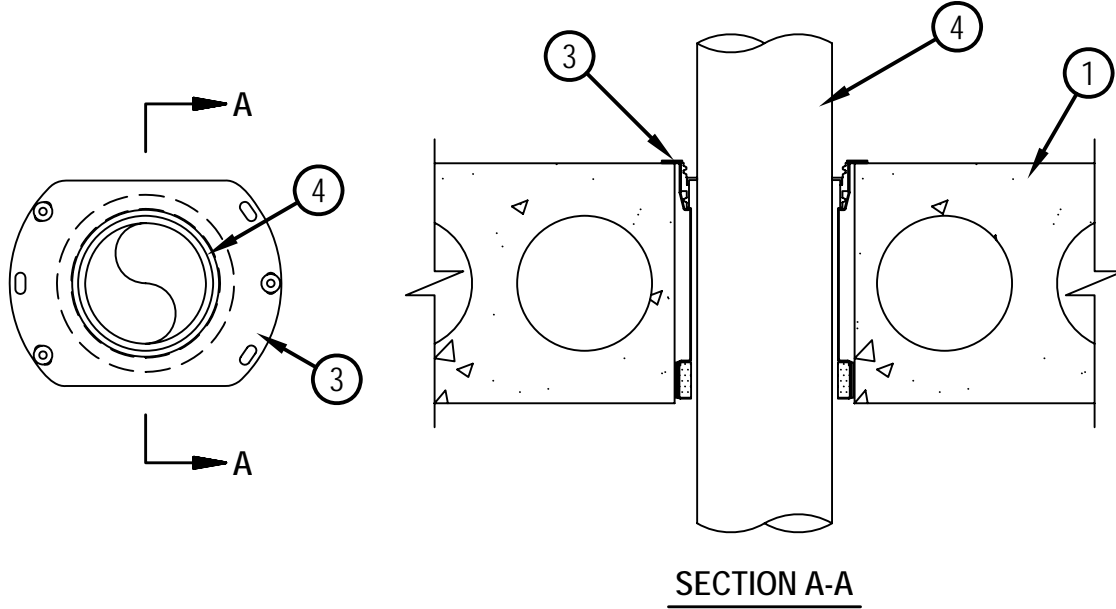
T Ratings — 0 and 1/4 Hr (See Item 2)

L Rating At Ambient — Less Than 1 CFM/sq ft (See Item 3A)

L Rating At 400 F — 1 CFM/sq ft (See Item 3A)

W Rating — Class I (See Item 3A)

FB 1029



1. Floor Assembly — Min 6 in. (152 mm) to max 12-1/2 in. (318 mm) thick UL Classified hollow core Precast Concrete Units\*. Max diam of opening is 6 in. (152 mm).

See Precast Concrete Units (CFTV) categories in the Fire Resistance Directory for names of manufacturers.

2. Sheet Metal Sleeve — (Optional, Not Shown) - Nom 4, 5 or 6 in. (102, 127 or 152 mm) diam, min 26 ga galv steel and having a min 2 in. (51 mm) lap along the longitudinal seam, and may extend a max of 4 in. (102 mm) below the bottom of the deck and flush with the top surface of the concrete floor. Sleeve installed by coiling the sheet steel to a diam smaller than the through opening, inserting the coil through the openings and releasing the coil to let it uncoil against the opening.

When sheet metal sleeve is used, T Rating is 0 Hr.

3. Firestop Device\* — Drop-in firestop device installed in core-drilled or sleeved opening in concrete floor assembly in accordance with accompanying installation instructions. The firestop device shall extend a max 1/2 in. (13 mm) below the bottom surface of the floor or may be recessed a max of 1/2 in. from the bottom surface of the floor. The firestop device flange should be secured to the top surface of the floor with three 1/4 in. (6 mm) diam by min 1-1/4 in. (32 mm) long steel expansion bolts or screw anchors (installed in a triangular fashion through holes provided). As alternates to the anchors specified above, Hilti 1/4 in. (6 mm) diam by 1-1/4 in. (32 mm) long KWIK-CON II+ concrete screw anchor, Hilti 1/4 in. (6 mm) diam by 1-3/4 in. (45 mm) long KWIK-BOLT 3 steel expansion anchor or Hilti 1/4 in. (6 mm) by 3/4 in. (19 mm) long Metal HIT Anchor may be used. In addition, for nom 2 in. (51 mm), 3 in. (76 mm) and 4 in. (102 mm) firestop devices, four 11/16 in. (18 mm) long Hilti X-GH P18 MX steel fasteners may be installed through the steel flange, two on each side. The firestop devices shall be installed as detailed in the following table:



**Hilti Firestop Systems**

Reproduced by HILTI, Inc. Courtesy of  
Underwriters Laboratories, Inc.

May 18, 2011



Classified by  
Underwriters Laboratories, Inc.  
to UL 1479 and CAN/ULC-S115

# System No. F-B-1029

F Rating — 3 Hr

T Ratings — 0 and 1/4 Hr (See Item 2)

L Rating At Ambient — Less Than 1 CFM/sq ft (See Item 3A)

L Rating At 400 F — 1 CFM/sq ft (See Item 3A)

W Rating — Class I (See Item 3A)

FB 1029

Core Hole or Sleeve Diam, In. (mm)	Firestop Device	Nom Diam of Through Penetrant, In. (mm)	Min-Max Floor Thickness In. (mm)
4 (102)	CFS-DID 2"C	2 (51) or smaller+	6 - 6-1/2 (152 - 165)
5 (102)	CFS-DID 3"C	3 (76)	6 - 6-1/2 (152 - 165)
6 (152)	CFS-DID 4"C	4 (102)	6 - 6-1/2 (152 - 165)
4 (102)	CFS-DID 2" HC8	2 (51) or smaller+	7-1/2 - 8-1/2 (191 - 216)
5 (102)	CFS-DID 3" HC8	3 (76)	7-1/2 - 8-1/2 (191 - 216)
6 (152)	CFS-DID 4" HC8	4 (102)	7-1/2 - 8-1/2 (191 - 216)
4 (102)	CFS-DID 2" HC10	2 (51) or smaller+	9-1/2 - 10-1/2 (241 - 267)
5 (102)	CFS-DID 3" HC10	3 (76)	9-1/2 - 10-1/2 (241 - 267)
6 (152)	CFS-DID 4" HC10	4 (102)	9-1/2 - 10-1/2 (241 - 267)
4 (102)	CFS-DID 2" HC12	2 (51) or smaller+	11-1/2 - 12-1/2 (292 - 318)
5 (102)	CFS-DID 3" HC12	3 (76)	11-1/2 - 12-1/2 (292 - 318)
6 (152)	CFS-DID 4" HC12	4 (102)	11-1/2 - 12-1/2 (292 - 318)

+ For pipe smaller than nom 2 in. (51 mm) diam, Adapter and Top Seal Plug is required to be used.

HILTI CONSTRUCTION CHEMICALS, DIV OF HILTI INC — CFS-DID 2"C, CFS-DID 3"C, CFS-DID 4"C, CFS-DID 2"HC8, CFS-DID 3"HC8, CFS-DID 4"HC8, CFS-DID 2"HC10, CFS-DID 3"HC10, CFS-DID 4"HC10, CFS-DID 2"HC12, CFS-DID 3"HC12, CFS-DID 4"HC12

3A. Firestop Device\* - Water Barrier Module — (Optional, Not Shown) - Used in combination with the CFS-DID device and supplied by device manufacturer. Module is threaded onto top of device.

W Rating and L Rating apply only when water barrier module is used.

HILTI CONSTRUCTION CHEMICALS, DIV OF HILTI INC — Water Barrier Module

4. Through Penetrant — One metallic pipe, conduit or tubing to be installed within the firestop device. Pipe, conduit or tubing to be rigidly supported on both sides of floor assembly. The following types of pipe, conduit or tubing may be used:

- A. Steel Pipe — Nom 4 in. (102 mm) diam (or smaller) Schedule 10 (or heavier) steel pipe.
- B. Iron Pipe — Nom 4 in. (102 mm) diam (or smaller) cast or ductile iron pipe.
- C. Conduit — Nom 4 in. (102 mm) diam (or smaller) rigid steel conduit.
- D. Conduit — Nom 4 in. (102 mm) diam (or smaller) steel electrical metallic tubing.
- E. Copper Tubing — Nom 4 in. (102 mm) diam (or smaller) Type L (or heavier) copper tubing.
- F. Copper Pipe — Nom 4 in. (102 mm) diam (or smaller) Regular) or heavier copper pipe.

\*Bearing the UL Classification Mark



**Hilti Firestop Systems**

Reproduced by HILTI, Inc. Courtesy of  
Underwriters Laboratories, Inc.

May 18, 2011