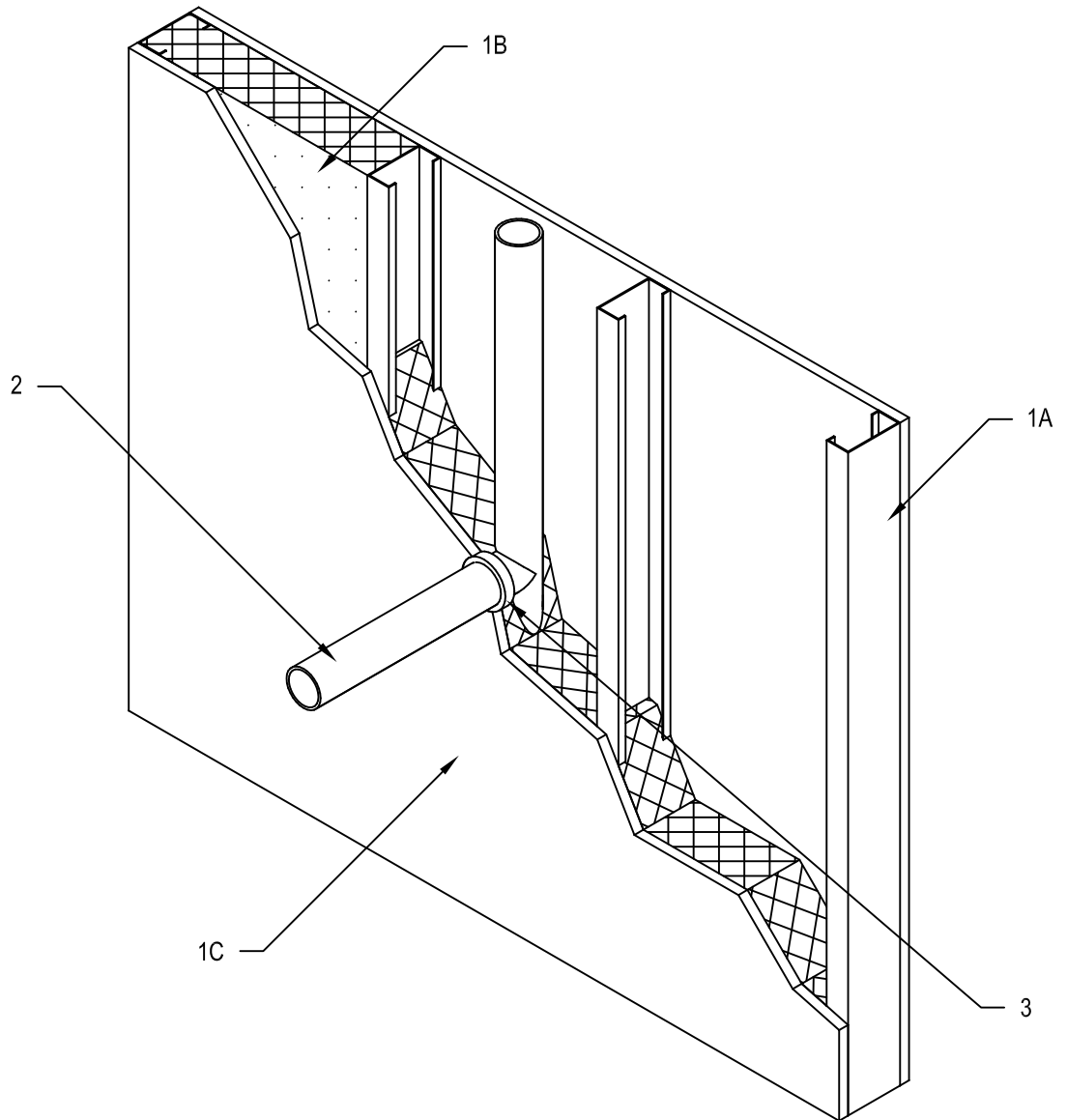


Hilti Corporation
Design Number HI/PF 60-01
Through Penetration
FS-ONE MAX Intumescent Firestop Sealant
CAN/ULC S115 (2011) at 50 Pa

HI/PF 60-01

Penetrating Item	Rating		
	F	FT	FTH
Schedule 40 cellular or solid core PVC Pipe	1-Hour	30 Minutes	0
Rigid Non-Metallic Conduit	1-Hour	30 Minutes	0
Schedule 40 (or thicker) cellular or solid core ABS pipe	1-Hour	1-Hour	0



Hilti Firestop Systems

Reproduced by HILTI, Inc.
 Courtesy of Intertek Group
 December 16, 2014



Hilti Corporation
Design Number HI/PF 60-01
Through Penetration
FS-ONE MAX Intumescent Firestop Sealant
CAN/ULC S115 (2011) at 50 Pa

HI/PF 60-01

Penetrating Item	Rating		
	F	FT	FTH
Schedule 40 cellular or solid core PVC Pipe	1-Hour	30 Minutes	0
Rigid Non-Metallic Conduit	1-Hour	30 Minutes	0
Schedule 40 (or thicker) cellular or solid core ABS pipe	1-Hour	1-Hour	0

1. WALL ASSEMBLY: Construct a 1 hour fire-rated gypsum wall assembly consisting of the following elements:
 - A. STUDS: Use 3-5/8 in. (92 mm), 25 GA steel studs or 2 in. x 4 in. wood studs spaced 16 in. (406 mm) on center.
 - B. INSULATION: Install min. R-13 unfaced fiberglass batt insulation in the cavities between the studs (Item 1A).
 - C. GYPSUM BOARD: Use 5/8 in. (16 mm) thick Type X gypsum board secured to steel (Item 1A) using #6, 1-1/4 in. long Type S bugle head screws spaced 8 in. (203 mm) on center around the perimeter and in the field. Create max. 3 in. opening in the gypsum board on one side of the wall assembly (Item 1).
2. PENETRATING ITEM: Install one of the following penetrating items:
 - Max. 2 in. (51 mm) Schedule 40 cellular or solid core PVC Pipe
 - Max. 2 in. (51 mm) Rigid Non-Metallic Conduit
 - Max. 2 in. (51 mm) Schedule 40 (or thicker) cellular or solid core ABS pipe

Install penetrating item centered or point contact in the through-opening created in the wall assembly (Item 1). Offset may be between 0 in. (0 mm) to 1 in. (25 mm).
3. CERTIFIED COMPANY: Hilti Corporation
 CERTIFIED PRODUCT: Sealant
 MODEL: FS-ONE MAX Intumescent Firestop Sealant
 Apply nominal 5/8 in. (16 mm) thick layer of FS-ONE MAX Intumescent Firestop Sealant to fill the annular space between the penetrating item (Item 2) and the opening in the gypsum board (Item 1C). When the penetrating item (Item 2) is installed point contact, an additional 1/4 in. bead of sealant is to be installed around the penetrating item (Item 2) at the gypsum board (Item 1C) interface.



Hilti Firestop Systems

Reproduced by HILTI, Inc.
 Courtesy of Intertek Group
 December 16, 2014

