



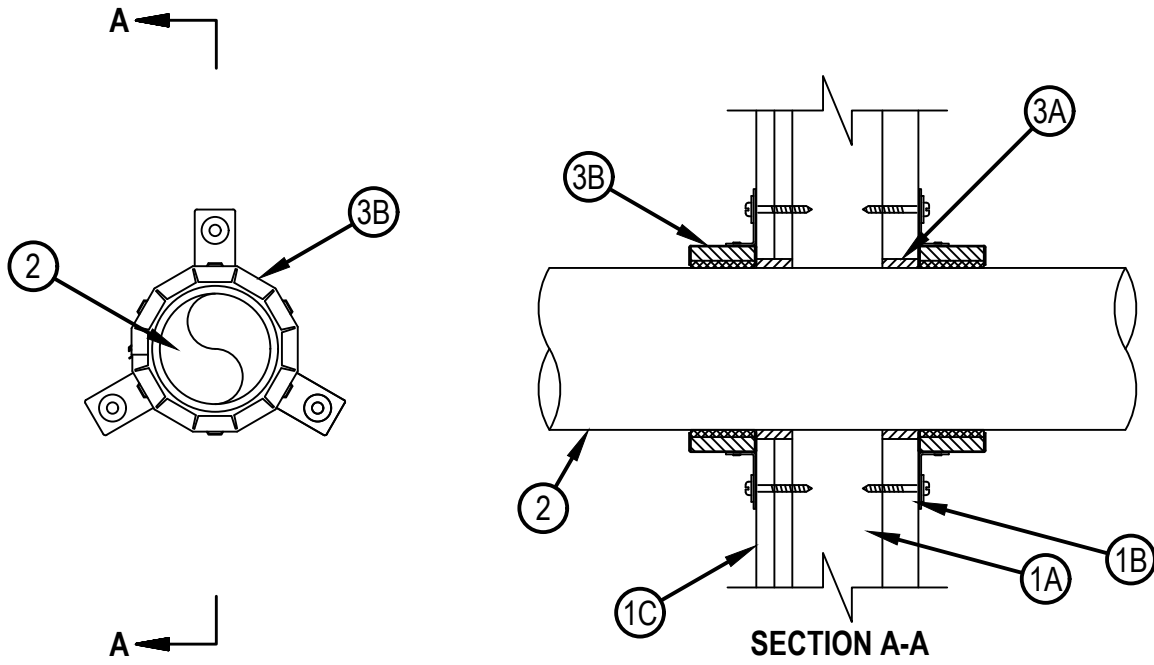
Underwriters Laboratories, Inc.  
to CAN/ULC-S115

## System No. W-L-2766

F Rating - 2 Hr  
FT Rating - 1 Hr  
FH Rating - 0 Hr  
FTH Rating - 0 Hr



WL 2766



System tested with a pressure differential of 50 Pa between the exposed and the unexposed surfaces with the higher pressure on the exposed side.

1. Wall Assembly — The fire-rated gypsum board/stud wall assembly shall be constructed of the materials and in the manner described in the individual U400, V400 or W400 Series Wall or Partition Design in the UL Fire Resistance Directory and shall include the following construction features:
  - A. Studs — "C-T" shaped studs 1-5/8 in. (16 mm) wide by 2-1/2 in. (64 mm) deep, fabricated from 25 MSG galv steel, spaced max 24 in. (610 mm) OC.
  - B. Gypsum Board\* — One layer of nom 1 in. (25 mm) thick, 24 in. (610 mm) wide gypsum liner as specified in the individual Wall and Partition Design. Max diam of opening in gypsum board is 5 in. (127 mm).
  - C. Gypsum Board\* — Two layers of 1/2 in. (13 mm) thick Type C gypsum board with square or tapered edges as specified in the individual Wall and Partition Design. Max diam of opening in gypsum board is 5 in. (127 mm).
2. Through-Penetrants — One nonmetallic pipe to be centered within the firestop system. The annular space between the pipe and the periphery of the opening shall be min 0 in. (point contact) to max 1/2 in. (13 mm). Pipe to be rigidly supported on both sides of wall assembly. The following types and sizes of nonmetallic pipes may be used:
  - A. Polyvinyl Chloride (PVC) Pipe — Nom 4 in. (102 mm) diam (or smaller) Schedule 40 solid or cellular core pipe for use in closed (process or supply) or vented (drain, waste or vent) piping systems.
  - B. Chlorinated Polyvinyl Chloride (CPVC) Pipe — Nom 4 in. (102 mm) diam (or smaller) Sch 40 CPVC pipe for use in closed (process or supply) or vented (drain, waste or vent) piping systems.



Reproduced by HILTI, Inc. Courtesy of  
Underwriters Laboratories, Inc.  
January 03, 2020

3. Firestop System — The firestop system shall consist of the following:

A. Fill, Void or Cavity Material — Sealant\* — Min 1 in. (25 mm) thickness of fill material applied within annulus flush with both surfaces of wall.  
HILTI CONSTRUCTION CHEMICALS, DIV OF HILTI INC — FS-ONE MAX Intumescent Sealant

B. Firestop Device — Firestop Collar — The firestop collar shall be sized for the penetrant and installed in accordance with the accompanying installation instructions. The collar shall be installed and latched around the pipe and secured to the gypsum board at both sides of wall with the anchor hooks provided with the collar. (Min 2 anchor hooks for 1-1/2 and 2 in. (38 and 51 mm) diam pipes and 3 anchor hooks for 3 and 4 in. (76 and 102 mm) diam pipes). The anchor hooks are to be secured to the wall with 3/16 in. (5 mm) by 2-1/2 in. (64 mm) toggle bolts along with min 3/4 in. (19 mm) diam steel washers.

HILTI CONSTRUCTION CHEMICALS, DIV OF HILTI INC — CP 643 50/1.5" N , CP643 63/2" N , CP643 90/3" N or CP 643 110/4" N Firestop Collar

\* Indicates such products shall bear the UL or cUL Certification Mark for jurisdictions employing the UL or cUL Certification (such as Canada), respectively.