
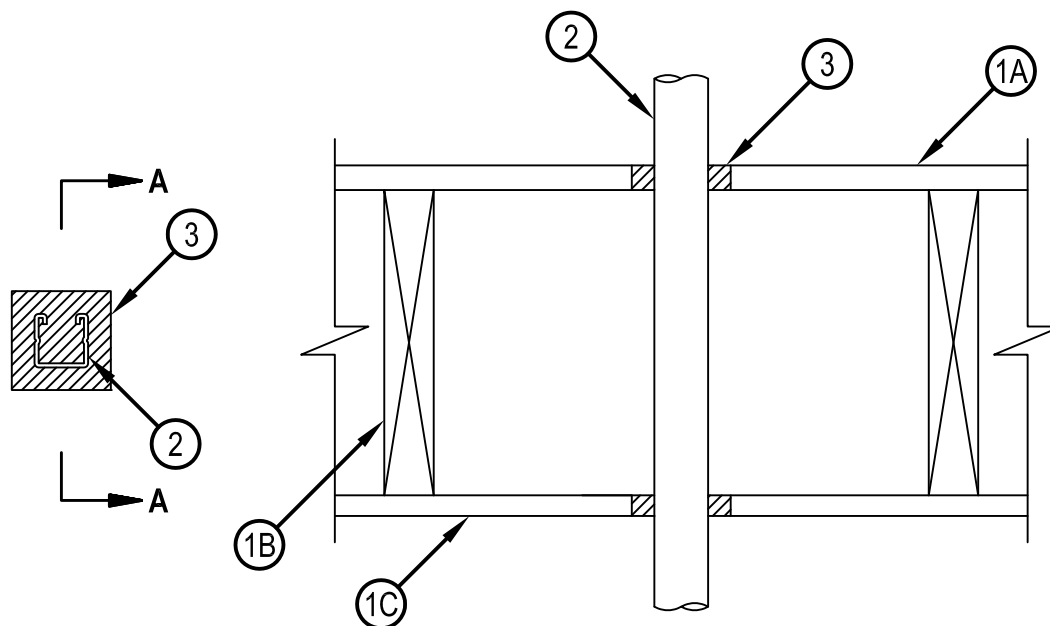


System No. F-C-7042

CLASSIFIED

 C US
 Classified by
 Underwriters Laboratories, Inc.
 to UL 1479 and CAN/ULC-S115

ANSI/UL1479 (ASTM E814)	CAN/ULC S115
F Rating — 1 Hr	F Rating — 1 Hr
T Rating — 0 Hr	FT Rating — 0 Hr
	FH Rating - 1 Hr
	FTH Rating — 0 Hr



SECTION A-A

1. Floor-Ceiling Assembly — The 1 hr fire-rated solid or trussed lumber joist floor-ceiling assembly shall be constructed of the materials and in the manner specified in the individual L500 Series Floor-Ceiling Designs in the UL Fire Resistance Directory. The general construction features of the floor-ceiling assembly are summarized below:
 - A. Flooring System — Lumber or plywood subfloor with finish floor of lumber, plywood or Floor Topping Mixture* as specified in the individual Floor-Ceiling Design. Max diam of opening shall be 5 in. (127 mm).
 - B. Wood Joists* — Nom 10 in. (254 mm) deep (or deeper) lumber, steel or combination lumber and steel joists, trusses or Structural Wood Members* with bridging as required and with ends firestopped.
 - C. Gypsum Board* — Min 5/8 in. (16 mm) thick as specified in the individual Floor-Ceiling Design. Gypsum board secured to wood joists or furring channels as specified in the individual Floor-Ceiling Design. Max area of rectangular opening is 15 sq in. (96 cm²) with max dimension of 5 in. (127 mm). In lieu of rectangular opening max diam of circular opening is 3 in. (76 mm).
- 1A. Chase Wall — (Optional, Not Shown) — The through penetrants (Item 2) may be routed through a 1 hr fire rated single, double or staggered wood stud/gypsum board chase wall. Depth of chase wall stud cavity to be min 1/2 in. greater than diameter of opening cut in sole and top plates to accommodate the through penetrant (Item 2). The chase wall shall be constructed of the materials and in the manner specified in the individual U300 Series Wall and Partition Designs in the UL Fire Resistance Directory and shall include the following construction features:
 - A. Studs — Nom 2 by 4 in. (51 by 102 mm), 2 by 6 in. (51 by 152 mm) or double nom 2 by 4 in. (51 by 102 mm) lumber studs.
 - B. Sole Plate — Nom 2 by 4 in. (51 by 102 mm), 2 by 6 in. (51 by 152 mm) or parallel 2 by 4 in. (51 by 102 mm) lumber plates, tightly butted. Max diam of opening is 5 in.
 - C. Top Plate — The double top plate shall consist of two nom 2 by 4 in. (51 by 102 mm), two nom 2 by 6 in. (51 by 152 mm) or two sets of parallel 2 by 4 in. (51 by 102 mm) lumber plates, tightly butted. Max diam of opening is 5 in.
 - D. Gypsum Board* — Thickness, type, number of layers and fasteners shall be as specified in the individual Wall and Partition Design.



Hilti Firestop Systems

Reproduced by HILTI, Inc. Courtesy of
 Underwriters Laboratories, Inc.
 January 20, 2015

2. Through Penetrants — One metallic strut, cable, rod or angle service support to be installed within the firestop system. An annular space of min 1/8 in. (3 mm) to max 7/8 in. (22 mm) is required within the firestop system. Strut, cable, rod or angle service support to be rigidly supported on both sides of floor/ceiling assembly. The strut, cable, rod or angle service support may be installed at an angle not greater than 45 degrees from the perpendicular. The following types and sizes of metallic strut, cable, rod or angle service support may be used:
- A. Steel Strut — Max 1-5/8 by 1-5/8 in. (41 by 41 mm) channel strut formed from min 0.105 in. (2.7 mm) thick galv or painted steel.
 - B. Steel Strut — Max 3-1/4 by 1-5/8 in. (83 by 41 mm) H strut formed from min 0.105 in. (2.7 mm) thick galv or painted steel.
 - C. Cable — Max 3/8 in. (9.5 mm) diam unjacketed galv steel cable.
 - D. Threaded Rod — Max 1 in. (25 mm) diam galv steel threaded rod.
 - E. Steel Angle — 2 by 2 by 1/8 in. (51 by 51 by 3 mm) thick steel angle.
3. Fill, Void or Cavity Materials*-Sealant — Min 3/4 in. (19 mm) thickness of sealant applied within the annulus flush with the top surface of the floor or sole plate and min 5/8 in. (16 mm) thickness of sealant applied within the annulus flush with the bottom surface of gypsum board or lower top plate.
- HILTI CONSTRUCTION CHEMICALS, DIV OF HILTI INC — CP 606 Flexible Firestop Sealant, FS-One Sealant or FS-ONE MAX Intumescent Sealant

* Indicates such products shall bear the UL or cUL Certification Mark for jurisdictions employing the UL or cUL Certification (such as Canada), respectively.

