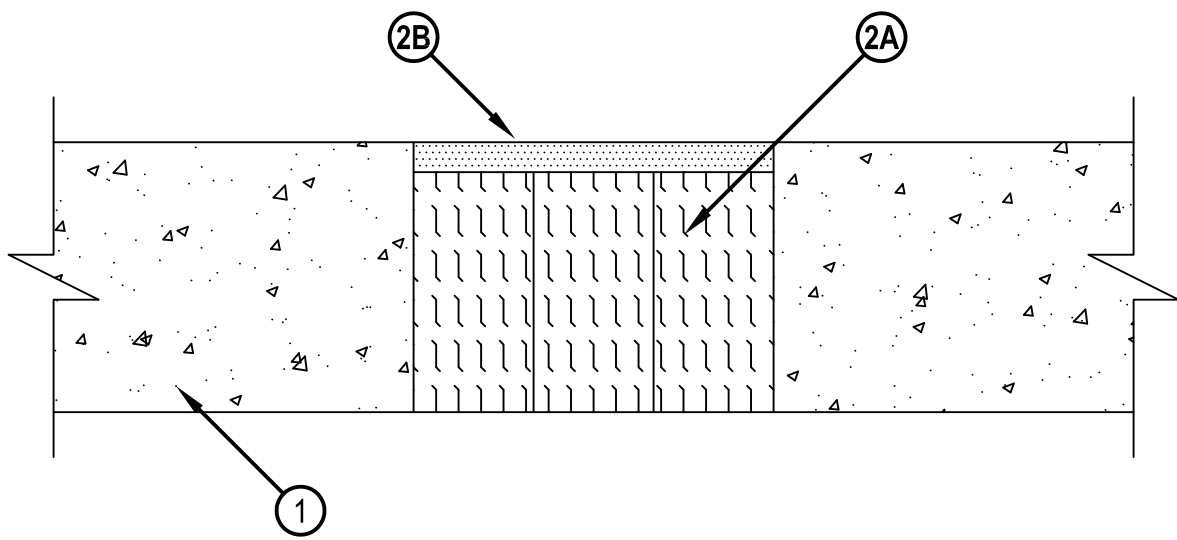


**System No. FF-D-1039**



Classified by  
Underwriters Laboratories, Inc.  
to UL 2079 and CAN/ULC-S115

ANSI/UL2079	CAN/ULC S115
Assembly Rating — 2 Hr	F Rating — 2 Hr
Nominal Joint Width - 6 In.	FT Rating — 2 Hr
Class II Movement Capabilities — 10% Compression or Extension	FH Rating — 2 Hr
	FTH Rating — 2 Hr
	Nominal Joint Width - 6 In.
	Class II Movement Capabilities — 10% Compression or Extension



1. Floor Assembly — Min 4-1/2 in. thick reinforced lightweight or normal weight (100-150 pcf) structural concrete.
2. Joint System — Max width of joint (at time of installation of joint system) is 6 in. The joint system is designed to accommodate a max 10 percent compression or extension from its installed width. The joint system shall consist of the following:
  - A. Forming Material — Min 4 pcf mineral wool batt insulation installed in joint opening as a permanent form. Pieces of batt cut to min width of 4 in. and installed edgewise into joint opening, parallel with joint direction, such that batt sections are compressed min 50 percent in thickness and that the compressed batt sections are recessed a min of 1/2 in. from top surface of the floor to accommodate the required thickness of fill material. Adjoining lengths of batt to be tightly-butted with butted seams spaced min 24 in. apart along the length of the joint.  
THERMAFIBER INC — Type SAF
  - B. Fill Void or Cavity Material\* - Sealant — Min 1/2 in. thickness of fill material applied within the joint, flush with top surface of floor.  
HILTI CONSTRUCTION CHEMICALS, DIV OF HILTI INC — CP604 Self-Leveling Firestop Sealant, CFS-S SIL GG or CFS-S SIL SL (floors only) Sealant

\*Bearing the UL Classification Mark



Reproduced by HILTI, Inc. Courtesy of  
Underwriters Laboratories, Inc.  
December 26, 2013