

**METAL PIPE THROUGH GYPSUM WALL ASSEMBLY**

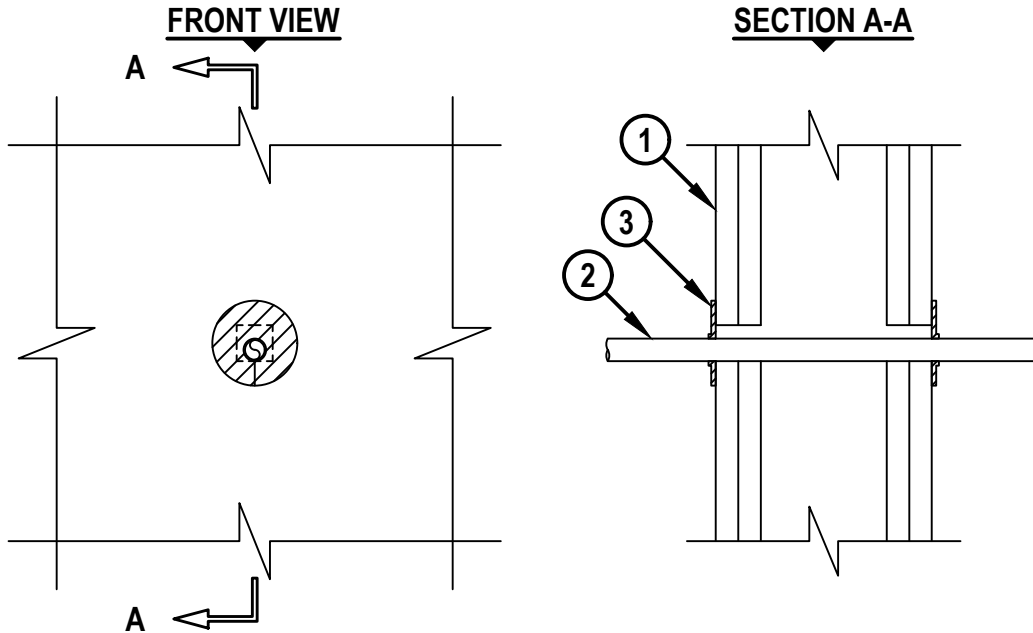
F-RATING = 1-HR. OR 2-HR.

T-RATING = 1-HR. OR 2-HR.

L-RATING AT AMBIENT = LESS THAN 1 CFM / OPENING

L-RATING AT 400°F = LESS THAN 1 CFM / OPENING

WL1506c.050820



1. GYPSUM WALL ASSEMBLY (UL/cUL CLASSIFIED U300, U400, V400, OR W400 SERIES) (1-HR. OR 2-HR. FIRE-RATING) (2-HR. SHOWN) TO INCLUDE THE FOLLOWING CONSTRUCTION FEATURES :
  - A. [NOT SHOWN] WOOD STUDS TO CONSIST OF NOMINAL 2" x 4" LUMBER (SPACED MAXIMUM 16" OC). STEEL STUDS TO BE MINIMUM 3-1/2" WIDE (SPACED MAXIMUM 24" OC).
  - B. NOMINAL 5/8" THICK GYPSUM WALLBOARD. TYPE, NUMBER OF LAYERS, AND SHEET ORIENTATION AS SPECIFIED IN THE INDIVIDUAL UL DESIGN.
2. PENETRATING ITEM TO BE ONE OF THE FOLLOWING :
  - A. MAXIMUM 3/4" NOMINAL DIAMETER STEEL PIPE (SCH 40 OR HEAVIER).
  - B. MAXIMUM 3/4" NOMINAL DIAMETER CAST OR DUCTILE IRON PIPE.
  - C. MAXIMUM 1/2" NOMINAL DIAMETER COPPER PIPE OR TUBING (TYPE L AND TYPE K OR HEAVIER).
  - D. MAXIMUM 3/4" NOMINAL DIAMETER RIGID OR FLEXIBLE STEEL CONDUIT.
  - E. MAXIMUM 3/4" NOMINAL DIAMETER EMT.
3. HILTI CFS-D 1" FIRESTOP PUTTY DISC PRESSED FIRMLY AROUND THE PIPE LAPPING NOMINAL 5mm ONTO PIPE COMPLETELY COVERING OPENING AND FIRMLY PRESSED TO LAP ONTO THE WALL. DISC SEAM TO BE FIRMLY PRESSED AND SEALED TIGHT.

NOTES : 1. OPENING MAY BE ROUND, RECTANGULAR, OR IRREGULAR WITH A MAXIMUM DIAMETER OF DIMENSION OF 1-1/8".  
 2. ANNULAR SPACE BETWEEN PENETRANT AND PERIPHERY OF OPENING = MINIMUM 0".  
 3. WHEN OPENING EXCEEDS 1", MAXIMUM ANNULAR SPACE = 3/8".



HILTI, Inc.  
Plano, Texas USA (800) 879-8000

Sheet	1 of 1
Scale	3/16" = 1"
Date	May 08, 2020

Drawing No.  
**WL  
1506c**