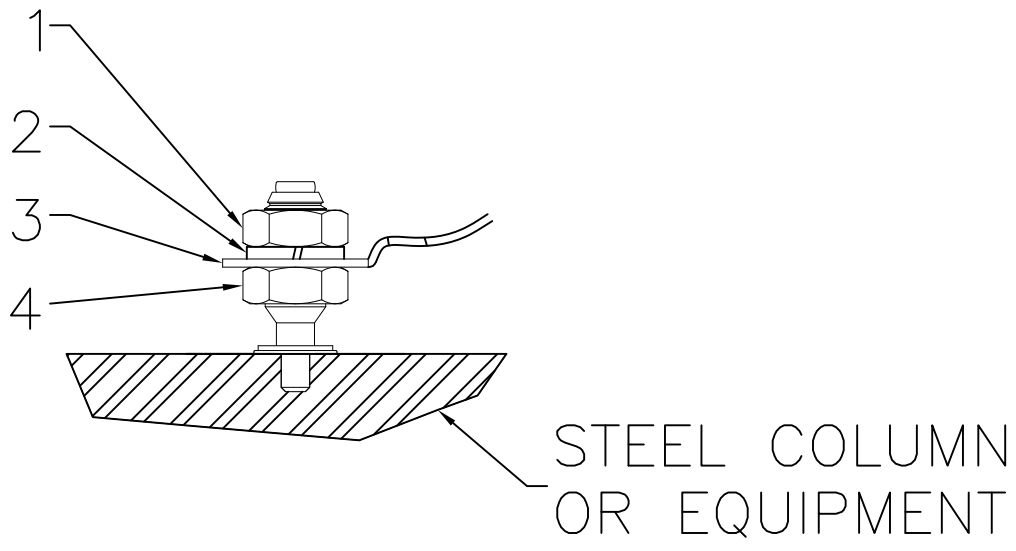


# HILTI X-BT-ER W10/3 SN4 ASSEMBLY FOR FUNCTIONAL BONDING AND TERMINAL CONNECTION



- 1. UPPER NUT A4 / AISI GRADE 316 MATERIAL
- 2. LOCK WASHER A4 / AISI GRADE 316 MATERIAL
- 3. CABLE LUG THICKNESS  $\leq 0.12''$  (3 mm)
- 4. BOTTOM NUT A4 / AISI GRADE 316 MATERIAL
- \* MAXIMUM ALLOWABLE PERMANENT CURRENT = 40A