



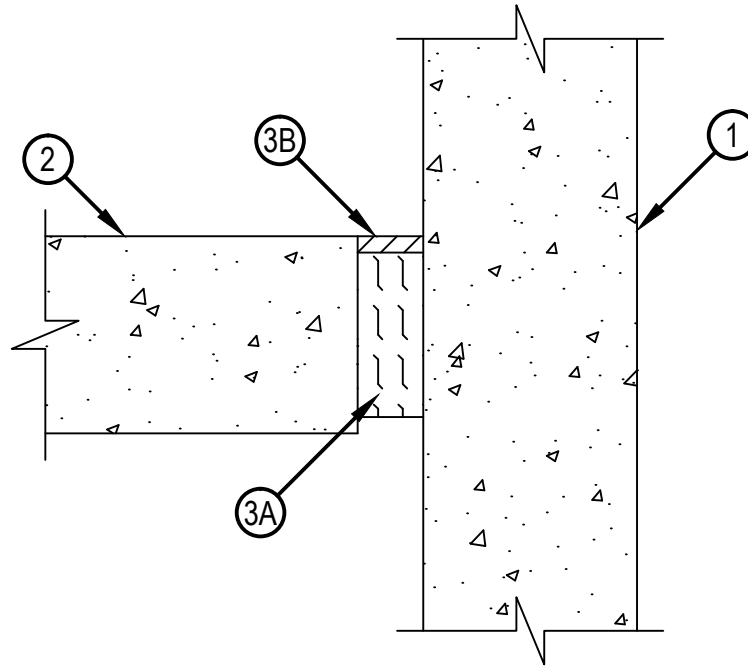
Classified by
Underwriters Laboratories, Inc.
to UL 2079 and CAN/ULC-S115

System No. FW-D-1047

Assembly Rating - 4 Hr
Nominal Joint Width - 2 In.

Class II Movement Capabilities - 12.5% Compression or Extension

FWD 1047



1. Wall Assembly — Min 6 in. thick reinforced lightweight or normal weight (100-150 pcf) structural concrete. Wall may also be constructed of any UL Classified Concrete Blocks*.
See Concrete Blocks (CAZT) category in the Fire Resistance Directory for names of manufacturers.
2. Floor Assembly — Min 6 in. thick reinforced lightweight or normal weight (100 - 150 pcf) structural concrete.
3. Joint System — Max separation between edge of floor and face of wall (at time of installation of joint system) is 2 in. The joint system is designed to accommodate a max 12.5 percent compression or extension from its installed width. The joint system shall consist of the following:
 - A. Forming Material — Min 4 pcf mineral wool batt insulation installed in joint opening as a permanent form. Pieces of batt cut to min width of 5 in. and installed edge-first into joint opening, parallel with joint direction, such that batt sections are compressed min 50 percent in thickness and that the compressed batt sections are recessed a min 1/2 in. from top surface of the floor as required to accommodate the required thickness of fill material. Adjoining lengths of batt to be tightly-butted with butted seams spaced min 24 in. apart along the length of the joint.
THERMAFIBER INC — Type SAF
 - B. Fill, Void or Cavity Material* - Sealant — Min 1/2 in. thickness of fill material applied within the joint, flush with top surface of floor.
HILTI CONSTRUCTION CHEMICALS, DIV OF HILTI INC — CP601S Elastomeric Firestop Sealant, CFS-S SIL GG or CFS-S SIL SL Sealant.

*Bearing the UL Classification Mark



Hilti Firestop Systems

Reproduced by HILTI, Inc. Courtesy of
Underwriters Laboratories, Inc.
February 14, 2014