

All loading and design criteria supplied by customer is assumed accurate. Only the stated Design Assumptions were considered, and must be verified by the responsible Engineer of Record (EOR). The basis of Hilti component and connection design is the published data in the current Hilti Technical Guide, including material and cross-section properties, allowable load values, factors of safety, methods of calculation, and limiting factors. The EOR must verify suitability for any specific application, and the capacity of the supportive structure to receive the shown configuration and associated reaction loads. Modification to components and/or design may alter performance and must be evaluated by the EOR.

PROJECT NAME:

**HAC TYPICAL DETAILS**

SERVICE REQUEST DESCRIPTION:

**CORNER FACE OF SLAB APPLICATION**

DESIGNED BY:

CAA

REVIEWED BY:

JAB

DRAWN BY:

JRS

ISSUE DATE:

25 JUL 13

REVISIONS:

NO.	DESCRIPTION:	DATE:
A	ORIGINAL ISSUE	25 JUL 13
C	REVISED TABLES AND TILTE BLOCK	29 SEPT 15
-	-	-
-	-	-
-	-	-
-	-	-
-	-	-
-	-	-
-	-	-
-	-	-
-	-	-
-	-	-
-	-	-
-	-	-

SERVICE REQUEST NUMBER:

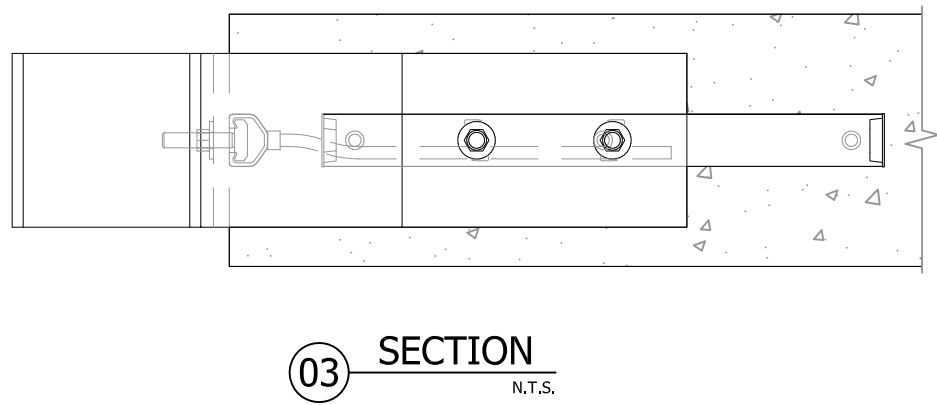
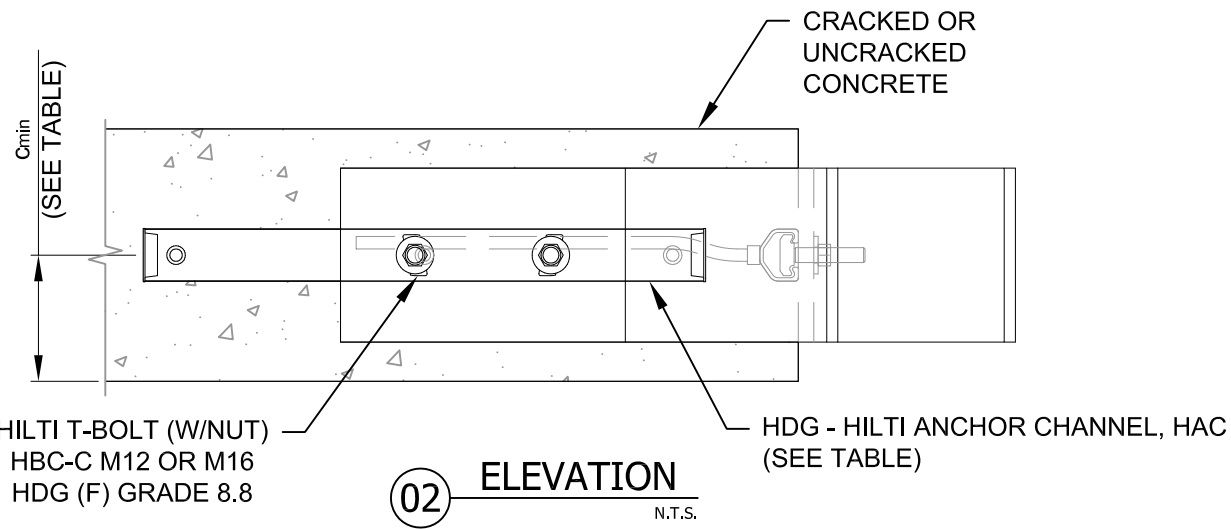
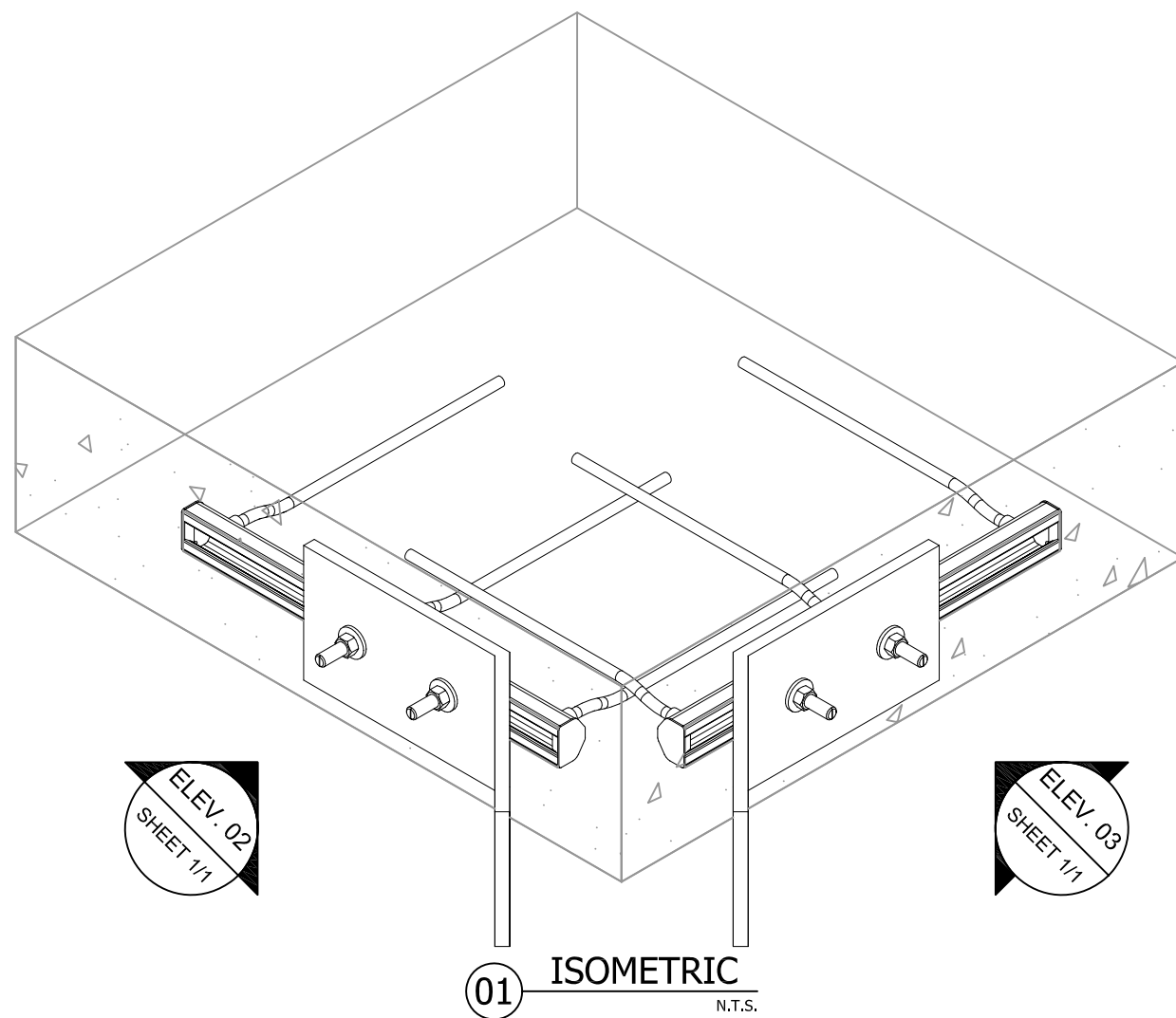
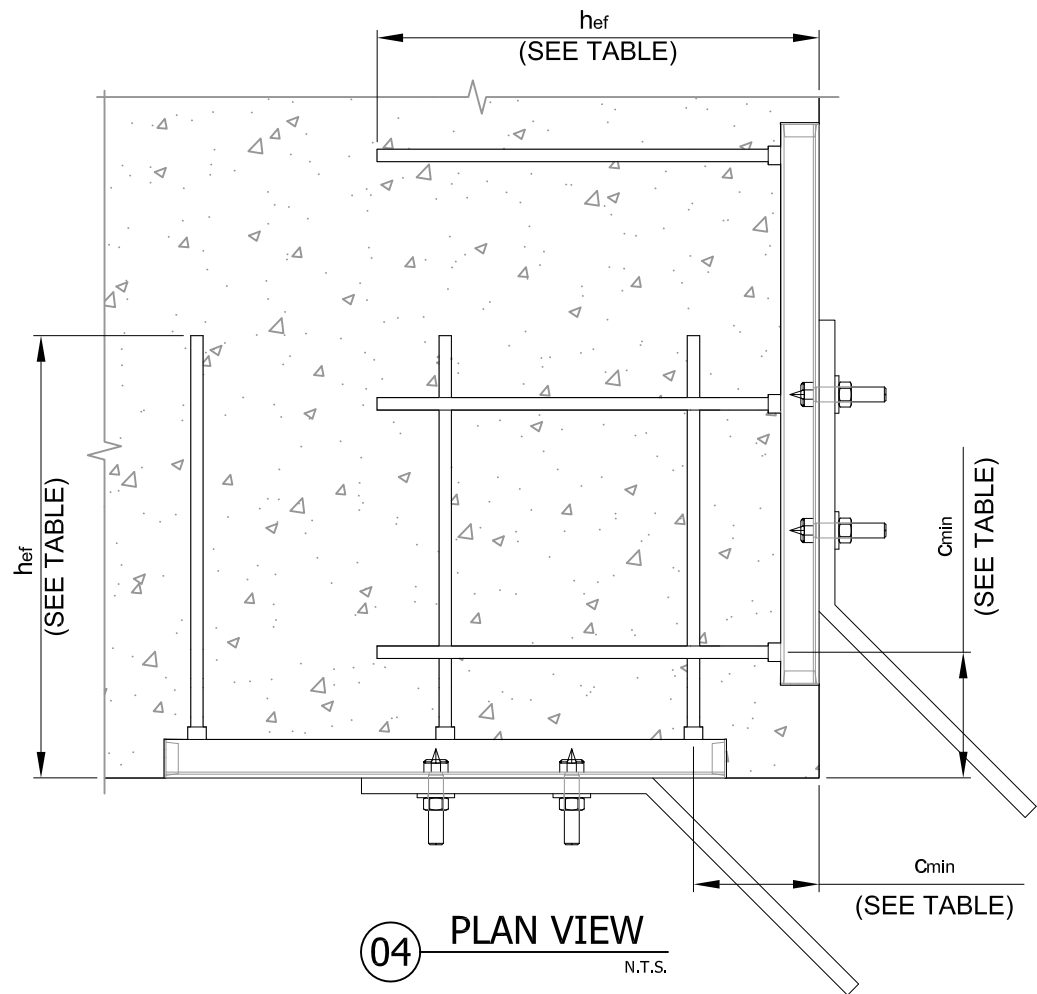
13-228

DRAWING NUMBER:

03

SHEET:

1/1



Anchor Channel Designation	Item No.	Channel Length	hef	Min. Edge Distance $c_{min}$ .	Rebar Diameter
Kit Channel HAC-40 369/300 F CRFoS	3516295	300 mm (12")	336 mm (14.5")	50 mm (2")	Ø10 (#3)
Kit Channel HAC-40 369/350 F CRFoS	3516296	350 mm (14")	336 mm (14.5")	50 mm (2")	Ø10 (#3)
Kit Channel HAC-40 369/450 F CRFoS	3516297	450 mm (18")	336 mm (14.5")	50 mm (2")	Ø10 (#3)
Kit Channel HAC-50 372/300 F CRFoS	3516298	300 mm (12")	372 mm (14.6")	75 mm (3")	Ø10 (#3)
Kit Channel HAC-50 372/350 F CRFoS	3516299	350 mm (14")	372 mm (14.6")	75 mm (3")	Ø10 (#3)
Kit Channel HAC-50 372/450 F CRFoS	3516300	450 mm (18")	372 mm (14.6")	75 mm (3")	Ø10 (#3)
Kit Channel HAC-60 470/300 F CRFoS	3516301	300 mm (12")	470 mm (18.5")	100 mm (4")	Ø12 (#4)
Kit Channel HAC-60 470/350 F CRFoS	3516302	350 mm (14")	470 mm (18.5")	100 mm (4")	Ø12 (#4)
Kit Channel HAC-60 470/450 F CRFoS	3516453	450 mm (18")	470 mm (18.5")	100 mm (4")	Ø12 (#4)
Kit Channel HAC-70 584/300 F CRFoS	3516454	300 mm (12")	584 mm (23")	100 mm (4")	Ø16 (#5)
Kit Channel HAC-70 584/350 F CRFoS	3516455	350 mm (14")	584 mm (23")	100 mm (4")	Ø16 (#5)
Kit Channel HAC-70 584/450 F CRFoS	3516456	450 mm (18")	584 mm (23")	100 mm (4")	Ø16 (#5)

**NOTE(S):**  
 \*1. NOTCHED T-BOLT FOR PARALLEL SHEAR FORCE (SHEAR FORCE PARALLEL TO LENGTH OF CHANNEL) APPLICATIONS.  
 \*\*2. THICKNESS MAY INCREASE DEPENDING ON THE LEVEL OF EXPOSURE TO WEATHER, CORROSIVE ENVIRONMENT, AND SPECIFIC PROJECT CRITERIA.

T-Bolt Designation	Item No.	Thickness Fastened MAX.
HBC-C M12x60 8.8F	2095646	35 mm (1-3/8")
HBC-C M12x80 8.8F	2095647	55 mm (2-1/8")
HBC-C M12x100 8.8F	2019733	75 mm (2-15/16")
HBC-C M16x60 8.8F	2095650	30 mm (1-1/8")
HBC-C M16x80 8.8F	2095651	50 mm (1-7/8")
*HBC-C-N M16x60 8.8 F	2019736	30 mm (1-1/8")
*HBC-C-N M16x80 8.8 F	433479	50 mm (1-7/8")
*HBC-C-N M20x80 8.8 F	2019739	45 mm (1-3/4")