



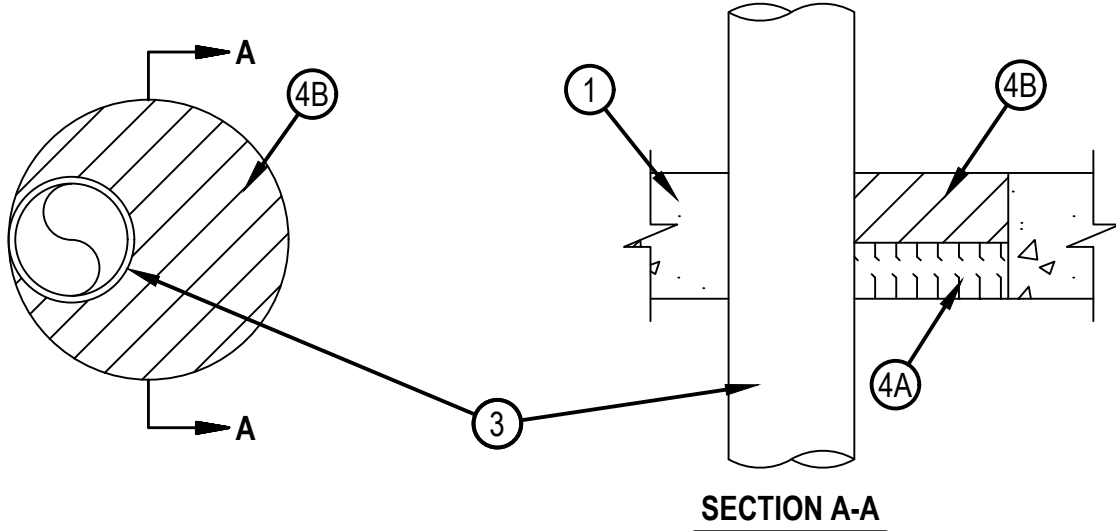
Classified by
Underwriters Laboratories, Inc.
to CAN/ULC-S115

System No. C-AJ-1661

F Rating - 2 Hr
T Rating - 0 Hr
FH Rating - 0 Hr
FTH Rating - 0 Hr



CAJ 1661



1. Floor or Wall Assembly — Min 114 mm (4-1/2 in.) thick reinforced lightweight or normal weight (1600-2400 kg/m³ or 100-150 pcf) concrete. Wall may also be constructed of any UL Classified Concrete Blocks*. Max diam of opening is 254 mm (10 in.)
See Concrete Blocks (CAZT) category in the Fire Resistance Directory for names of manufacturers.
 2. Metallic Sleeve — (Optional) (Not Shown) — Nom 254 mm (10 in.) diam (or smaller) Schedule 40 (or heavier) steel sleeve cast or grouted into floor or wall assembly flush with floor or wall surfaces.
 3. Through Penetrants — One metallic pipe, conduit or tube to be installed either concentrically or eccentrically within the firestop system. The annular space between the pipe, conduit or tube and periphery of opening shall be min 0 mm (point contact) to max 149 mm (5-7/8 in.). Pipe, conduit or tube to be rigidly supported on both sides of floor or wall assembly.
 - A. Steel Pipe — Nom 102 mm (4 in.) diam (or smaller) Schedule 10 (or heavier) steel pipe.
 - B. Iron Pipe — Nom 102 mm (4 in.) diam (or smaller) cast or ductile iron pipe.
 - C. Conduit — Nom 102 mm (4 in.) diam (or smaller) rigid steel conduit.
 - D. Conduit — Nom 102 mm (4 in.) diam (or smaller) steel electrical metallic conduit.
 - E. Copper Tubing — Nom 102 mm (4 in.) diam (or smaller) Type L (or heavier) copper tubing.
 - F. Copper Pipe — Nom 102 mm (4 in.) diam (or smaller) Regular (or heavier) copper pipe.
 4. Firestop System — The firestop system shall consist of the following:
 - A. Packing Material — Min 51 mm (2 in.) thickness of 64 kg/m³ (4 pcf) mineral wool batt insulation tightly packed into the opening as a permanent form. Packing material to be recessed from top surface of floor and both surfaces of wall as required to accommodate the required thickness of fill material.
 - B. Fill, Void or Cavity Materials* — Foam — Min 64 mm (2-1/2 in.) thickness of fill material applied within the annulus, flush with top surface of floor or with both surfaces of wall.
HILTI CONSTRUCTION CHEMICALS, DIV OF HILTI INC — CP 660 Firestop Foam
- * Indicates such products shall bear the UL or cUL Certification Mark for jurisdictions employing the UL or cUL Certification (such as Canada), respectively.



Reproduced by HILTI, Inc. Courtesy of
Underwriters Laboratories, Inc.
January 25, 2016