



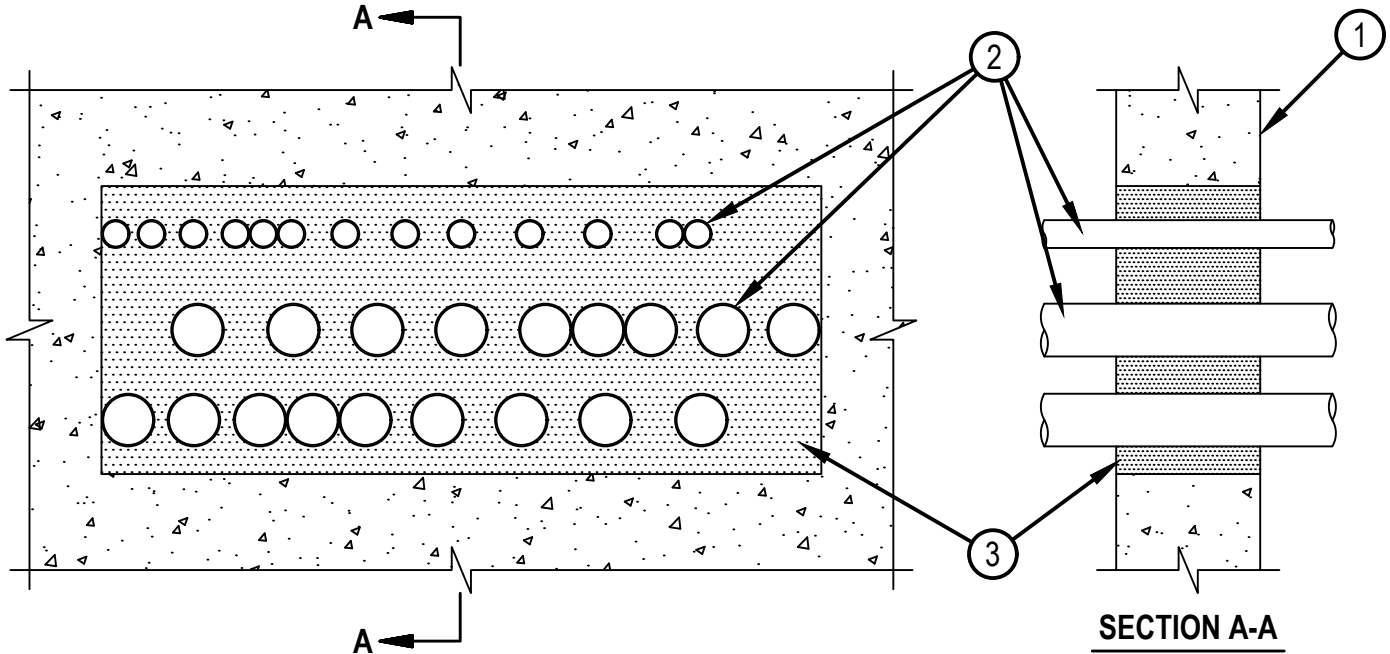
Classified by
Underwriters Laboratories, Inc.
to CAN/ULC-S115

System No. W-J-1259

F Rating - 1 and 2 Hr
FT Rating - 1/2 Hr
FH Rating - 0 Hr
FTH Rating - 0 Hr



WJ1259



1. Floor or Wall Assembly — Min 121 mm and 152 mm (4-3/4 in. and 6 in.) thick reinforced lightweight or normal weight (1600-2400 kg/m³ or 100-150 pcf) concrete for 1 and 2 Hr, respectively. Wall may also be constructed of any solid or filled UL Classified Concrete Blocks*. Max area of opening is 2322 cm² (360 in²) with max dimension of 762 mm (30 in.).

See Concrete Blocks (CAZT) category in the Fire Resistance Directory for names of manufacturers.

2. Through Penetrants — One or more nom 51 mm (2 in.) diam (or smaller) rigid steel conduit or electrical metallic tubing (EMT) to be installed within the opening. The annular space between conduits or tubing shall be min 0 mm (point contact) to max 86 mm (3-3/8 in.). The annular space between conduits or tubing and periphery of opening shall be min 0 mm (point contact) to max 76 mm (3 in.). Conduit or tubing to be rigidly supported on both sides of wall assembly.

3. Fill, Void or Cavity Materials* — Foam — Fill material applied within annulus flush with one surface of the wall. Min fill material thickness for 1 Hr F Rating is 121 mm (4-3/4 in.). Min fill material thickness for 2 Hr F Rating is 152 mm (6 in.).

HILTI CONSTRUCTION CHEMICALS, DIV OF HILTI INC — CP 660 Firestop Foam

* Indicates such products shall bear the UL or cUL Certification Mark for jurisdictions employing the UL or cUL Certification (such as Canada), respectively.



Hilti Firestop Systems

Reproduced by HILTI, Inc. Courtesy of
Underwriters Laboratories, Inc.
January 25, 2016