



Classified by
Underwriters Laboratories, Inc.
to CAN/ULC-S115

System No. W-L-0048

F Ratings — 1 and 2 Hr (See Items 1 and 2)

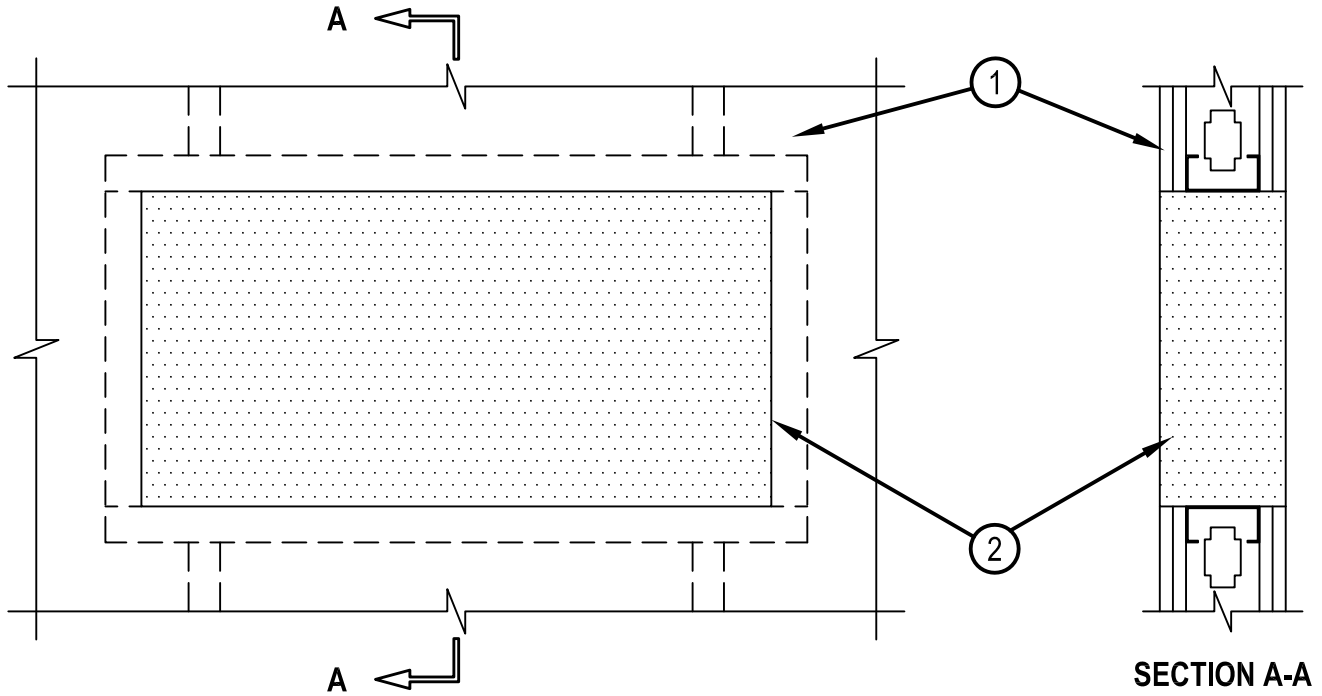
FT Ratings — 1 and 2 Hr (See Item 2)

FH Rating - 0 Hr

FTH Rating - 0 Hr



WL 0048



1. Wall Assembly — The 1 or 2 hr fire-rated gypsum board/stud wall assembly shall be constructed of the materials and in the manner described in the individual U400, V400 or W400 Series Wall or Partition Design in the UL Fire Resistance Directory and shall include the following construction features:

A. Studs — Steel studs 89 mm (3-1/2 in.) deep, fabricated from 25 MSG galv steel, spaced max 610 mm (24 in.) OC.

B. Gypsum Board* — The gypsum board type, number of layers, fastener type and sheet orientation shall be as specified in the individual Wall and Partition Design. Max area of opening is 2903 cm² (450 in²) with max dimension of 762 mm (30 in.).

The hourly F and FT Ratings of the firestop system are equal to the hourly fire rating of the wall assembly in which it is installed.

2. Fill, Void or Cavity Material* — Foam fill material applied within annulus flush with both surfaces of the wall. Min fill material thickness for 1 hr F and FT Ratings is 121 mm (4-3/4 in.). Min fill material thickness for 2 hr F and FT Ratings is 152 mm (6 in.).

HILTI CONSTRUCTION CHEMICALS, DIV OF HILTI INC — CP 660 Firestop Foam

* Indicates such products shall bear the UL or cUL Certification Mark for jurisdictions employing the UL or cUL Certification (such as Canada), respectively.



Hilti Firestop Systems

Reproduced by HILTI, Inc. Courtesy of
Underwriters Laboratories, Inc.
January 25, 2016