



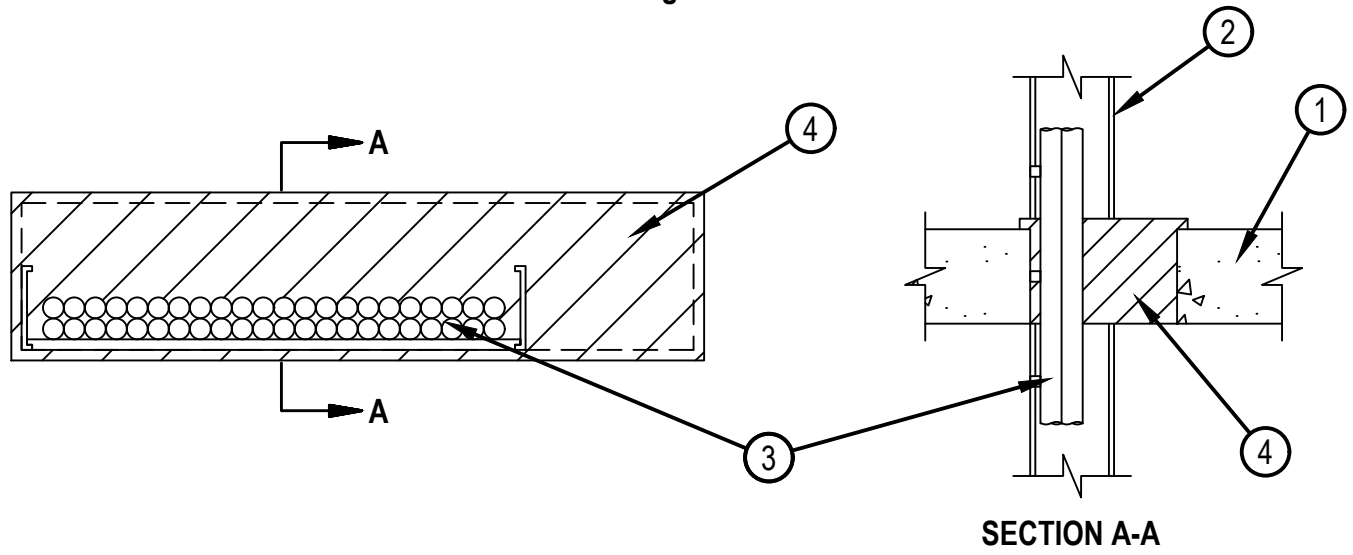
Classified by
Underwriters Laboratories, Inc.
to CAN/ULC-S115

System No. C-AJ-4106

F Rating - 2 Hr
T Rating - 0 Hr
FH Rating - 0 Hr
FTH Rating - 0 Hr



CAJ 4106



1. Floor or Wall Assembly — Min 114 mm (4-1/2 in.) thick reinforced lightweight or normal weight (1600-2400 kg/m³ or 100-150 pcf) concrete. Wall may also be constructed of any UL Classified Concrete Blocks*. Max area of opening is (1445 cm² or 224 in²) with max dimension of 813 mm (32 in.).

See Concrete Blocks (CAZT) category in the Fire Resistance Directory for names of manufacturers.

2. Cable Tray* — Max 610 mm (24 in.) wide by 102 mm (4 in.) deep open-ladder cable tray with channel-shaped side rails formed of 2.54 mm thick aluminum and 38 mm (1-1/2 in.) wide by 25 mm (1 in.) channel shaped rungs spaced on 229 mm (9 in.) OC. The annular space between cable tray and periphery of opening shall be min 0 mm (point contact) to max 127 mm (5 in.). Cable tray to be rigidly supported on both sides of wall assembly.
3. Cables — Aggregate cross-sectional area of cable tray to be max 45 percent of the cross-sectional area of the cable tray. Any combination of the following types and sizes of copper conductor cables may be used:
 - A. Max 300 pair No. 24 AWG telephone cable with polyvinyl chloride (PVC) insulation and jacket.
 - B. Max 500 kcmil single conductor copper power cable with PVC jacket material.
 - C. Multiple fiber optical communication cable jacketed with PVC and having a max OD of 9.5 mm (3/8 in.)
 - D. Max 3/C No. 12 AWG copper conductor steel clad cable with PVC insulation material.

4. Firestop System — The firestop system shall consist of the following:

- A. Fill, Void or Cavity Materials* — Foam — Min 127 mm (5 in.) thickness of fill material applied within the annulus, extending 13 mm (1/2 in.) above the top surface of the floor or both surfaces of wall and overlapping the concrete 13 mm (1/2 in.) on all sides of the opening.
HILTI CONSTRUCTION CHEMICALS, DIV OF HILTI INC — CP 660 Firestop Foam
- B. Fill, Void or Cavity Materials — (Optional — Not Shown) — Nom 51 mm (2 in.) deep Fire Blocks applied in a single layer above cables within cable tray with 127 mm (5 in.) dimension projecting through the opening and long dimension parallel to floor or wall. Either one or a combination of the block types specified below may be used.
HILTI CONSTRUCTION CHEMICALS, DIV OF HILTI INC — FS 657 Fire Block or CFS-BL Firestop Block

* Indicates such products shall bear the UL or cUL Certification Mark for jurisdictions employing the UL or cUL Certification (such as Canada), respectively.



Hilti Firestop Systems

Reproduced by HILTI, Inc. Courtesy of
Underwriters Laboratories, Inc.
January 25, 2016