



Classified by
Underwriters Laboratories, Inc.
to CAN/ULC-S115

System No. W-J-4078

F Ratings - 1 and 2 Hr (See Items 1 and 4)

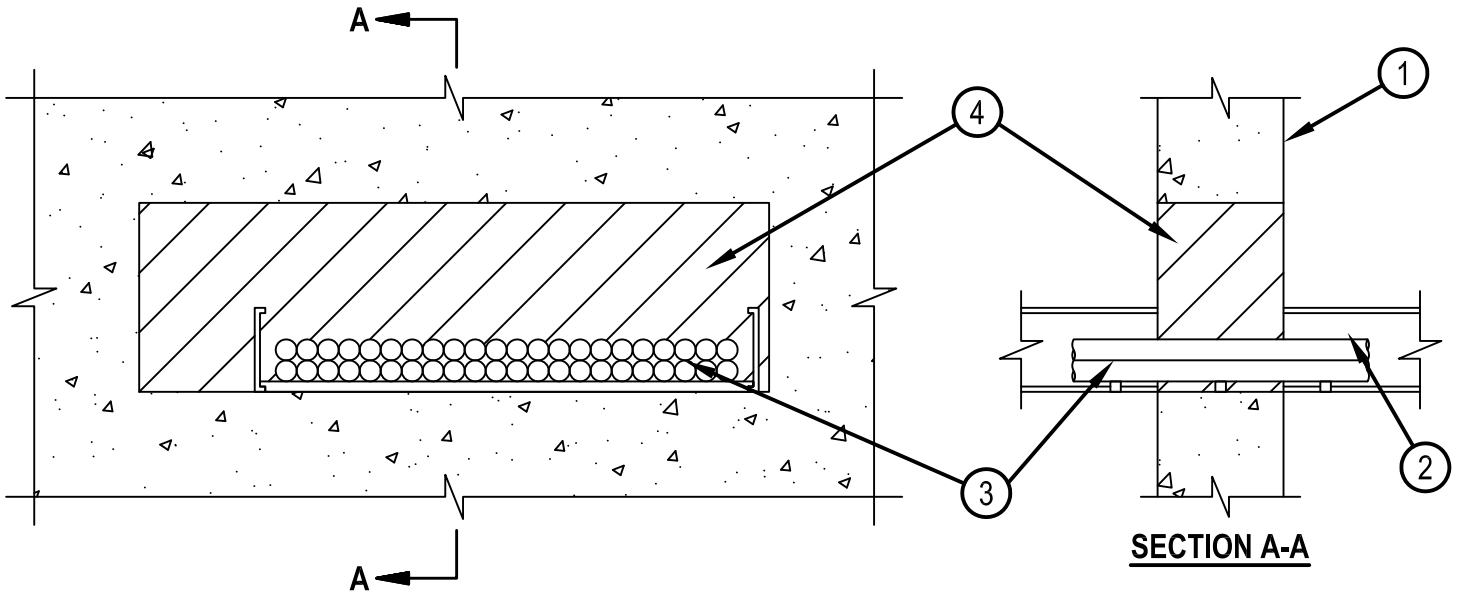
FT Rating - 0 Hr

FH Rating - 0 Hr

FTH Rating - 0 Hr



WJ 4078



1. Wall Assembly — Min 121 mm (4-3/4 in.) and 152 mm (6 in.) thick reinforced lightweight or normal weight (100-150 pcf or 1600-2400 kg/m³) concrete for 1 and 2 hr F Ratings, respectively. Wall may also be constructed of any solid or filled UL Classified Concrete Blocks*. Max area of opening is 1742 cm² (270 sq. in.) with max dimension of 762 mm (30 in.).
See Concrete Blocks (CAZT) category in the Fire Resistance Directory for names of manufacturers.
2. Cable Tray* — Max 610 mm (24 in.) wide by 4 in. (102 mm) deep open-ladder cable tray with channel-shaped side rails formed of 2.54 mm (0.10) thick aluminum and 38 mm (1-1/2 in.) wide by 25 mm (1 in.) channel shaped rungs spaced on 229 mm (9 in.) OC. The annular space between cable tray and periphery of opening shall be min 0 mm (point contact) to max 127 mm (5 in.). Cable tray to be rigidly supported on both sides of wall assembly.
3. Cables — Aggregate cross-sectional area of cables in cable tray to be max 45 percent of the cross-sectional area of the cable tray. Any combination of the following types and sizes of copper conductor cables may be used:
 - A. Max 300 pair No. 24 AWG telephone cable with polyvinyl chloride (PVC) insulation and jacket.
 - B. Max 500 kcmil single conductor copper power cable with PVC jacket material.
 - C. Multiple fiber optical communication cable jacketed with PVC and having a max OD of 9 mm (3/8 in.).
 - D. Max 3/C No. 12 AWG copper conductor steel clad cable with PVC insulation material.
4. Firestop System — The firestop system shall consist of the following:
 - A. Fill, Void or Cavity Materials* — Foam — Fill material applied within annulus flush with one surface of the wall. Min fill material thickness for 1 hr F Rating is 121 mm (4-3/4 in.). Min fill material thickness for 2 Hr F Rating is 152 mm (6 in.).
HILTI CONSTRUCTION CHEMICALS, DIV OF HILTI INC — CP 660 Firestop Foam
 - B. Fill, Void or Cavity Material* — Fire Blocks — (Optional, Not Shown) — Nom 51 mm (2 in.) deep Fire Blocks applied in a single layer above cables within cable tray with 127 mm (5 in.) dimension projecting through opening in wall and long dimension parallel to wall.
HILTI CONSTRUCTION CHEMICALS, DIV OF HILTI INC — FS 657 Fire Block or CFS-BL Firestop Block

* Indicates such products shall bear the UL or cUL Certification Mark for jurisdictions employing the UL or cUL Certification (such as Canada), respectively.



Hilti Firestop Systems

Reproduced by HILTI, Inc. Courtesy of
Underwriters Laboratories, Inc.
January 25, 2016