

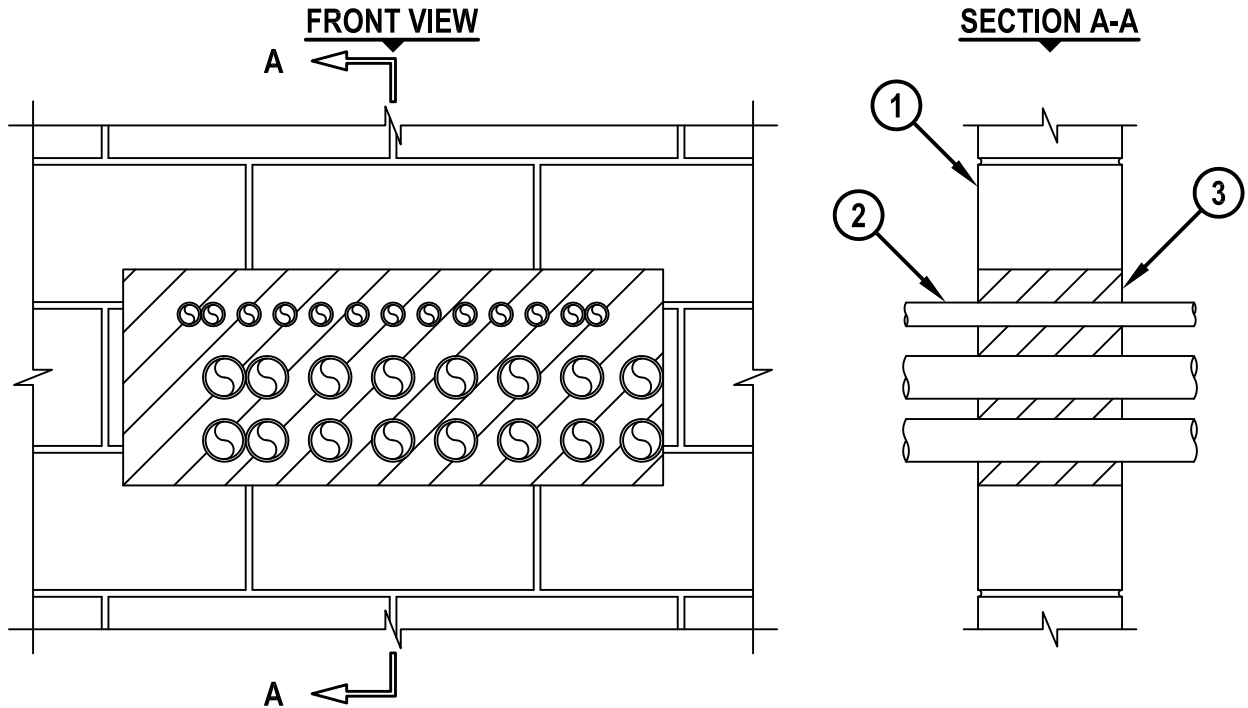
# MULTIPLE METAL PIPES THROUGH CONCRETE WALL OR CONCRETE BLOCK WALL ASSEMBLY

F-RATING = 1-HR. OR 2-HR.

FT-RATING = 1/2-HR.

FH-RATING = 0-HR.

FTH-RATING = 0-HR.



cUL WJ1259a.012716

1. CONCRETE WALL ASSEMBLY (1-HR. OR 2-HR. FIRE-RATING) :
  - A. LIGHTWEIGHT OR NORMAL WEIGHT CONCRETE WALL (MIN. 4-3/4" THICK, FOR A 1-HR. FIRE-RATING).
  - B. LIGHTWEIGHT OR NORMAL WEIGHT CONCRETE WALL (MIN. 6" THICK, FOR A 2-HR. FIRE-RATING).
  - C. ANY UL/ULC CLASSIFIED SOLID OR FILLED CONCRETE BLOCK WALL.
2. PENETRATING ITEMS TO BE ONE OR MORE OF THE FOLLOWING :
  - A. MAXIMUM 2" NOMINAL DIAMETER STEEL CONDUIT.
  - B. MAXIMUM 2" NOMINAL DIAMETER EMT.
3. HILTI CP 660 FIRESTOP FOAM INSTALLED FLUSH WITH BOTH SURFACES OF THE WALL :
  - A. MINIMUM 4-3/4" THICKNESS, FOR A 1-HR. FIRE-RATING.
  - B. MINIMUM 6" THICKNESS, FOR A 2-HR. FIRE-RATING.

**NOTES :** 1. MAXIMUM SIZE OF OPENING = 30" x 12".  
 2. ANNULAR SPACE BETWEEN PIPES = MINIMUM 0", MAXIMUM 3-3/8".  
 3. ANNULAR SPACE BETWEEN PIPES AND PERIPHERY OF OPENING = MINIMUM 0", MAXIMUM 3".

 <b>Hilti Firestop Systems</b>	HILTI, Inc. Plano, Texas USA (800) 879-8000	Sheet 1 of 1	Drawing No. <b>cUL</b> <b>WJ1259a</b>
		Scale 3/32" = 1"	
		Date Jan. 27, 2016	
<b><i>Saving Lives through Innovation and Education</i></b>			