

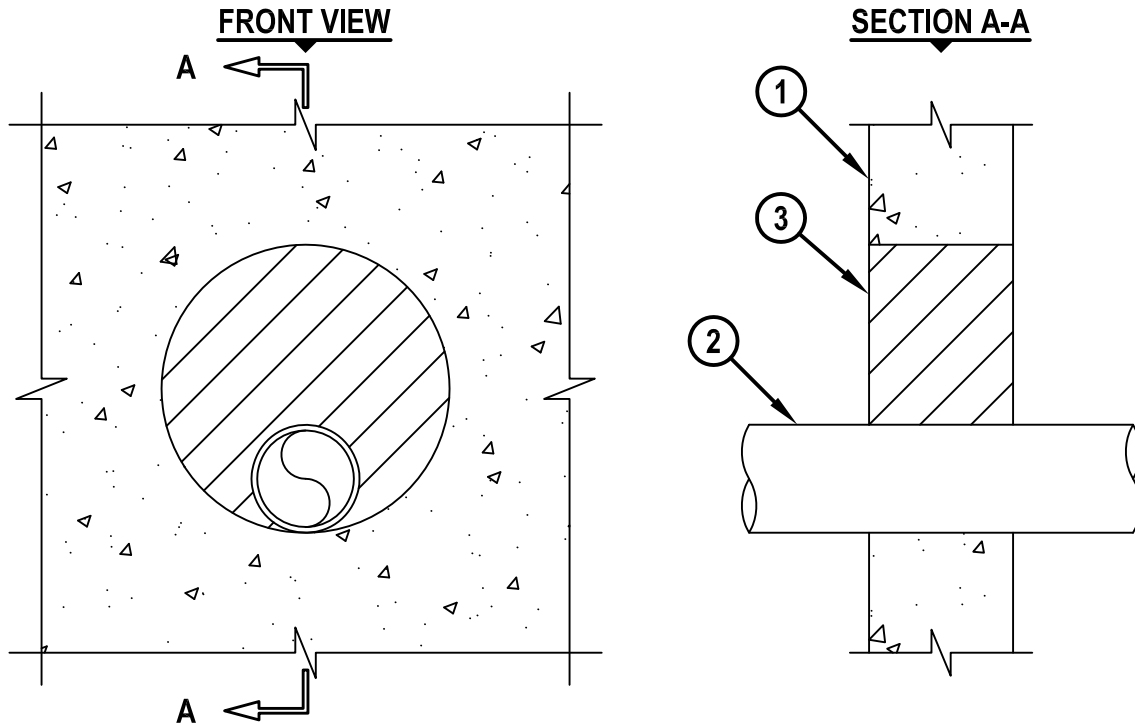
# METAL PIPE THROUGH CONCRETE WALL OR BLOCK WALL ASSEMBLY

F-RATING = 1-HR. OR 2-HR.

FT-RATING = 0-HR.

FH-RATING = 0-HR.

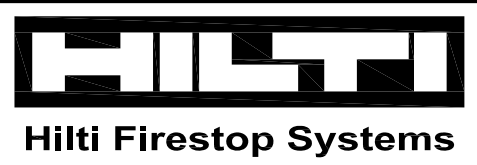
FTH-RATING = 0-HR.



cUL WJ1260a.012716

1. CONCRETE WALL ASSEMBLY (1-HR. OR 2-HR. FIRE-RATING) (2-HR. SHOWN) :
  - A. LIGHT WEIGHT OR NORMAL WEIGHT CONCRETE WALL (MIN. 4-3/4" THICK, FOR A 1-HR. FIRE-RATING).
  - B. LIGHT WEIGHT OR NORMAL WEIGHT CONCRETE WALL (MIN. 6" THICK, FOR A 2-HR. FIRE-RATING).
  - C. ANY UL/cUL CLASSIFIED SOLID OR FILLED CONCRETE BLOCK WALL.
2. PENETRATING ITEM TO BE ONE OF THE FOLLOWING :
  - A. MAXIMUM 4" DIAMETER STEEL PIPE (SCHEDULE 10 OR HEAVIER).
  - B. MAXIMUM 4" DIAMETER CAST IRON PIPE.
  - C. MAXIMUM 4" NOMINAL DIAMETER COPPER PIPE.
  - D. MAXIMUM 4" NOMINAL DIAMETER STEEL CONDUIT OR EMT.
3. HILTI CP 660 FIRESTOP FOAM INSTALLED FLUSH WITH BOTH SURFACES OF THE WALL :
  - A. MINIMUM 4-3/4" THICKNESS, FOR A 1-HR. FIRE-RATING.
  - B. MINIMUM 6" THICKNESS, FOR A 2-HR. FIRE-RATING.

NOTES : 1. MAXIMUM DIAMETER OF OPENING = 12".  
 2. ANNULAR SPACE = MINIMUM 0", MAXIMUM 7-7/8".



HILTI, Inc.  
 Plano, Texas USA (800) 879-8000

Sheet	1 of 1
Scale	1/8" = 1"
Date	Jan. 27, 2016

Drawing No.  
**cUL**  
**WJ1260a**