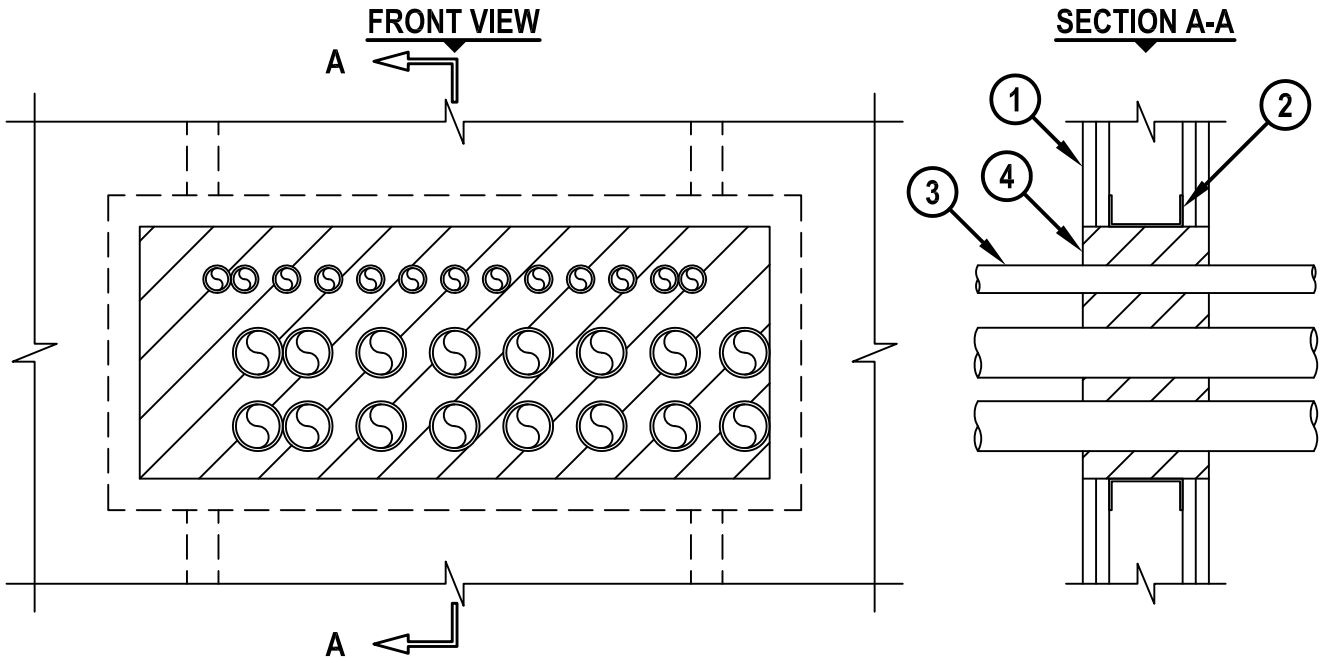


# MULTIPLE METAL PIPES THROUGH GYPSUM WALL ASSEMBLY

F-RATING = 1-HR. OR 2-HR.  
 FT-RATING = 1/2-HR.  
 FH-RATING = 0-HR.  
 FTH-RATING = 0-HR.

cUL WL1518a.012816



1. GYPSUM WALL ASSEMBLY (UL/cUL CLASSIFIED U400 SERIES) (1-HR. OR 2-HR. FIRE-RATING) (2-HR. SHOWN).
2. OPENING TO BE "FRAMED OUT" WITH LIGHTGAGE STEEL STUDS (MIN. 3-1/2" WIDE).
3. PENETRATING ITEMS TO BE ONE OR MORE OF THE FOLLOWING :
  - A. MAXIMUM 2" NOMINAL DIAMETER STEEL CONDUIT.
  - B. MAXIMUM 2" NOMINAL DIAMETER EMT.
4. HILTI CP 660 FIRESTOP FOAM INSTALLED FLUSH WITH BOTH SURFACES OF THE WALL :
  - A. MINIMUM 4-3/4" THICKNESS, FOR A 1-HR. FIRE-RATING.
  - B. MINIMUM 6" THICKNESS, FOR A 2-HR. FIRE-RATING.

**NOTES :** 1. MAXIMUM SIZE OF OPENING = 30" x 12".  
 2. ANNULAR SPACE BETWEEN PIPES = MINIMUM 0", MAXIMUM 3-3/8".  
 3. ANNULAR SPACE BETWEEN PIPES AND PERIPHERY OF OPENING = MINIMUM 0", MAXIMUM 3".



HILTI, Inc.  
 Plano, Texas USA (800) 879-8000

Sheet	1 of 1
Scale	7/64" = 1"
Date	Jan. 28, 2016

Drawing No.  
**cUL**  
**WL1518a**