

# FIRESTOP CLOSET STUB CFS-CID CS

## Product description

- A coupling device designed to address cast-in for toilet fixtures
- Material can be solvent welded to PVC piping
- Available for 3" and 4" PVC applications

## Product dimensions (diameter x height)

- 3": 5-11/16" x 3-1/8"
- 4": 6-3/4" x 3-5/8"

## Application dimensions

- 3": 3-1/2" inner diameter (for use with 3" PVC pipe)
- 4": 4-1/2" inner diameter (for use with 4" PVC pipe)

## Minimum slab thickness

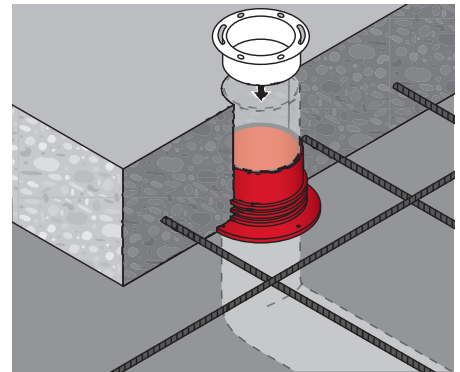
- 6"

## Color

- Red

## Installation instructions

- See Hilti literature or third-party listings for complete application and installation details



## Technical Data

Application temperature range	40 °F to 120 °F
Storage temperature range	40 °F to 120 °F
Temperature resistance range	-68 °F to 212 °F
Shelf life	Not relevant

## Order Information

Order Designation	Sales pack quantity	Item number
Firestop Closet Stub CFS-CID CS, 3"	12 pc	2136604
Firestop Closet Stub CFS-CID CS, 4"	12 pc	2136605

