



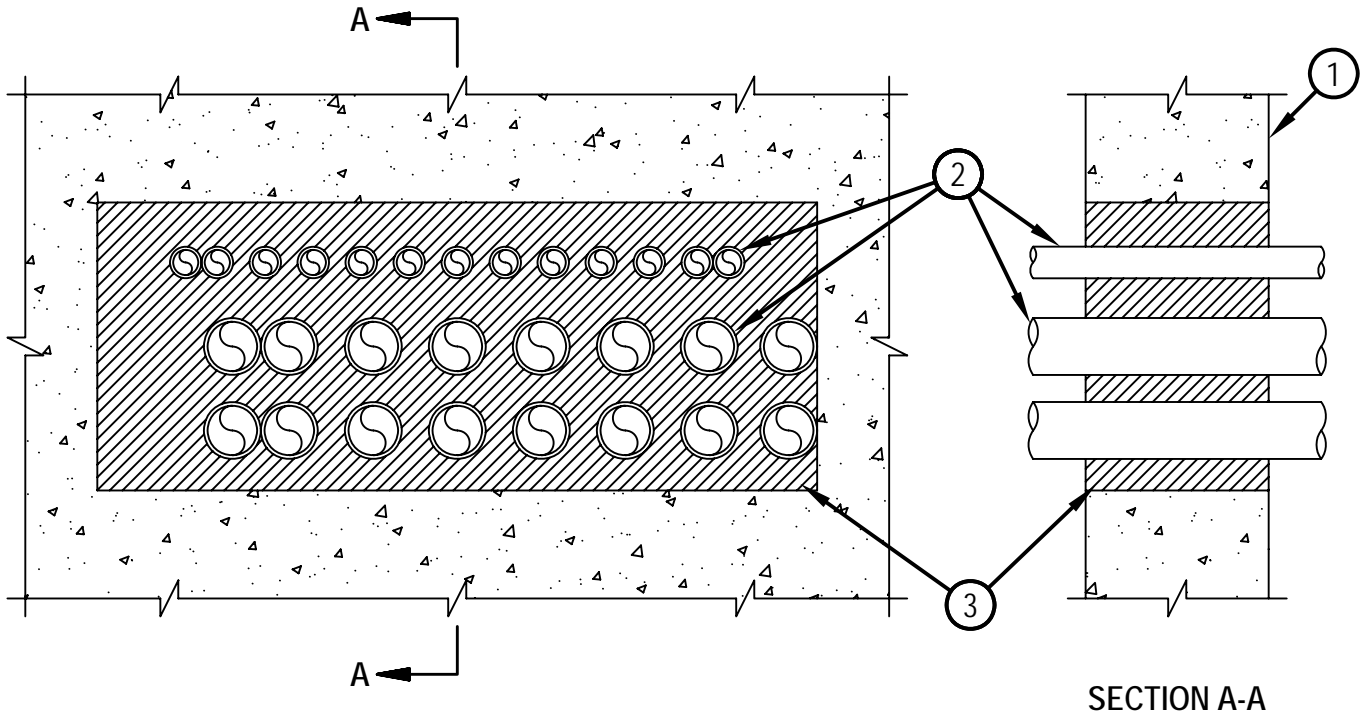
Classified by
Underwriters Laboratories, Inc.
to UL 1479 and CAN/ULC-S115

System No. W-J-1116

F Ratings — 1 and 2 Hr

T Rating — 1/2 Hr

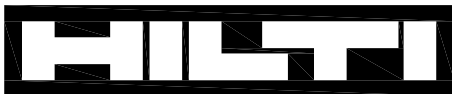
WJ 1116



1. Floor or Wall Assembly — Min 4-3/4 in. and 6 in. thick reinforced lightweight or normal weight (100-150 pcf) concrete for 1 and 2 Hr, respectively. Wall may also be constructed of any solid or filled UL Classified Concrete Blocks*. Max area of opening is 360 in.2 with max dimension of 30 in. See Concrete Blocks (CAZT) category in the Fire Resistance Directory for names of manufacturers.
2. Through Penetrants — One or more nom 2 in. diam (or smaller) rigid steel conduit or electrical metallic tubing (EMT) to be installed within the opening. The annular space between conduits or tubing shall be min 0 in. (point contact) to max 3-3/8 in. The annular space between conduits or tubing and periphery of opening shall be min 0 in. (point contact) to max 3 in. Conduit or tubing to be rigidly supported on both sides of wall assembly.
3. Fill Void or Cavity Material - Foam* — Fill material applied within annulus flush with one surface of the wall. Min fill material thickness for 1 Hr F Rating is 4-3/4 in. Min fill material thickness for 2 Hr F Rating is 6 in.

HILTI CONSTRUCTION CHEMICALS, DIV OF HILTI INC — CP 620 Fire Foam

*Bearing the UL Classification Mark



Hilti Firestop Systems

Reproduced by HILTI, Inc. Courtesy of
Underwriters Laboratories, Inc.

March 06, 2002