



Classified by  
Underwriters Laboratories, Inc.  
to UL 1479 and CAN/ULC-S115

# System No. W-J-1124

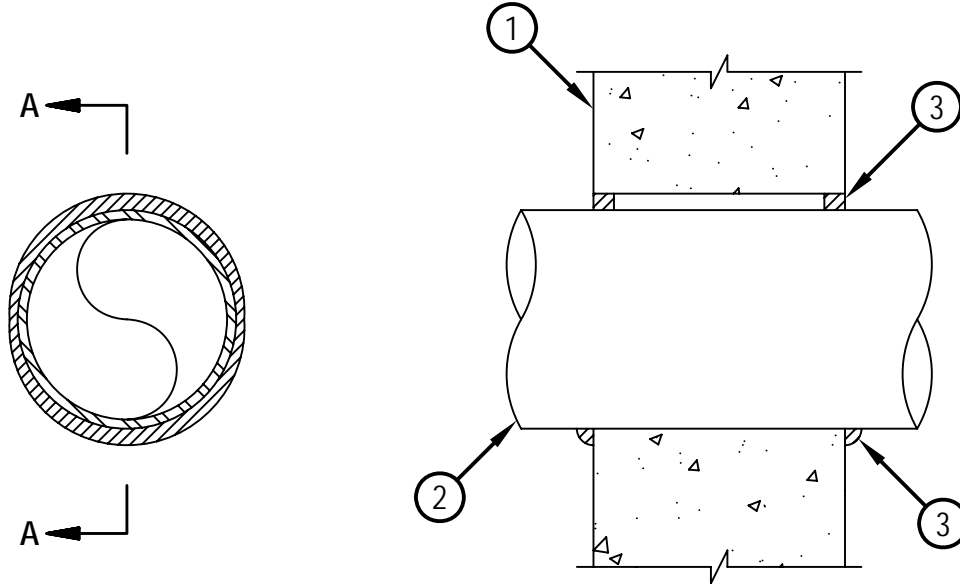
F Rating — 2 Hr

T Rating — 0 Hr

L Rating At Ambient — Less Than 1 CFM/sq ft

L Rating At 400 F — Less Than 1 CFM/sq ft

WJ 1124



SECTION A-A

1. Wall Assembly — Min 5 in. thick reinforced lightweight or normal weight (100-150 pcf) concrete. Wall may also be constructed of any UL Classified Concrete Blocks\*. Max diameter of opening 5 in.

See Concrete Blocks (CAZT) category in the Fire Resistance Directory for names of manufacturers.

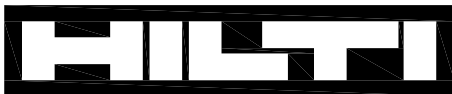
2. Through Penetrant — One metallic pipe, conduit or tubing installed concentrically or eccentrically within the firestop system. Pipe, conduit or tube to be rigidly supported on both sides of wall assembly. The annular space between the pipe, conduit or tube and periphery of the opening shall be min 0 in (point contact) to max 1/2 in. The following types and sizes of metallic pipes, conduit or tube may be used:

- A. Steel Pipe — Nom 4 in. diam (or smaller) Schedule 40 (or heavier) steel pipe.
- B. Iron Pipe — Nom 4 in. diam (or smaller) cast or ductile iron pipe.
- C. Conduit — Nom 4 in. diam (or smaller) steel electrical metallic tubing (EMT) or steel conduit.
- D. Copper Tube — Nom 4 in. diam (or smaller) Type L (or heavier) copper tube.
- E. Copper Pipe — Nom 4 in. diam (or smaller) Regular (or heavier) copper pipe.

3. Fill, Void or Cavity Material\*-Sealant — Min 5/8 in. thickness of fill material applied within the annulus, flush with both surfaces of wall. At the point contact location between pipe and wall, a min 1/2 in diam bead of fill material shall be applied at the pipe/wall interface.

HILTI CONSTRUCTION CHEMICALS, DIV OF HILTI INC — CP606 Flexible Firestop Sealant

\*Bearing the UL Classification Mark



**Hilti Firestop Systems**

Reproduced by HILTI, Inc. Courtesy of  
Underwriters Laboratories, Inc.

July 09, 2010