



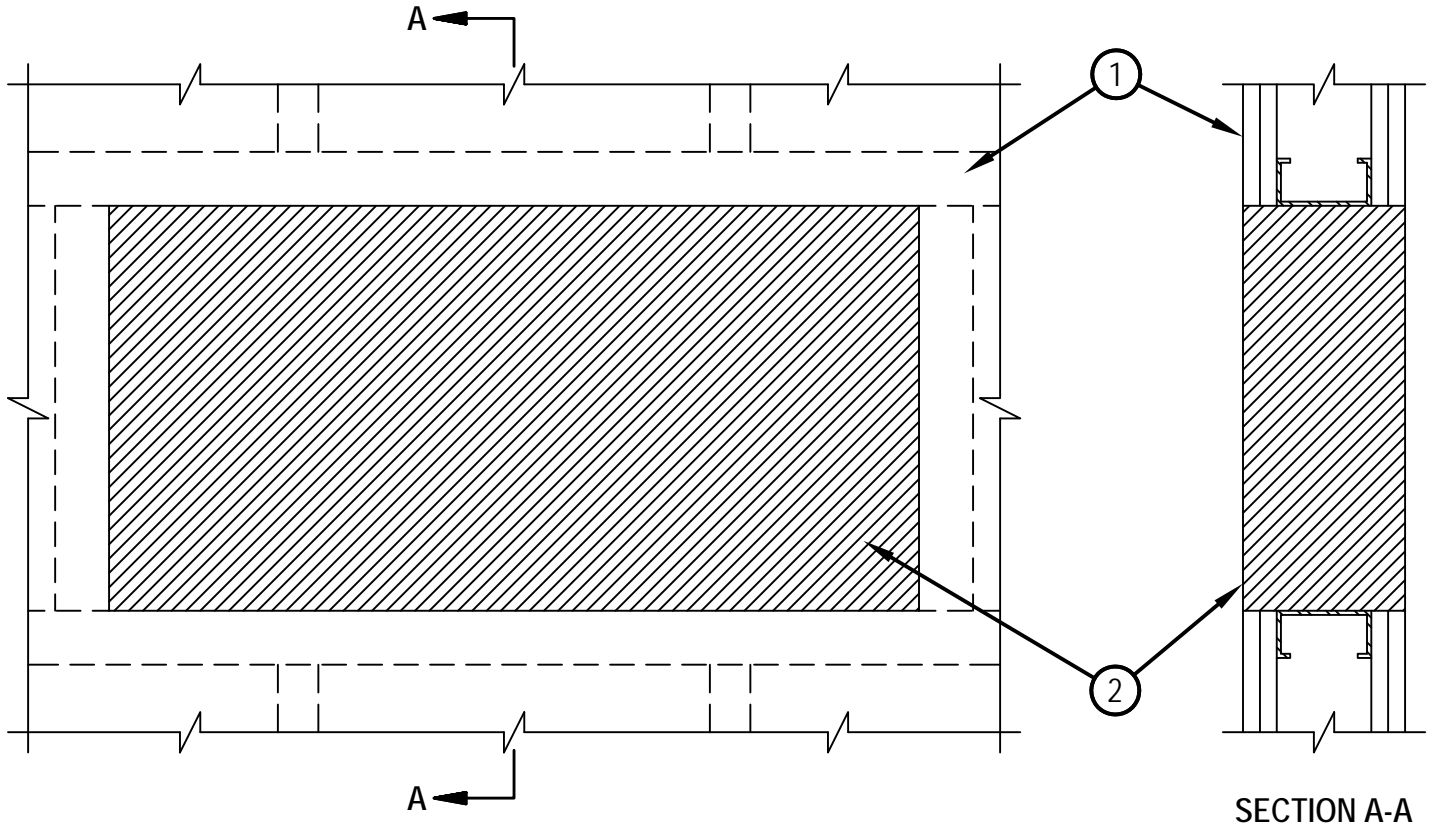
Classified by
Underwriters Laboratories, Inc.
to UL 1479 and CAN/ULC-S115

System No. W-L-0012

F Rating - 1 Hr & 2 Hr (See Item 1 & 2)

T Rating - 1 Hr & 2 Hr (See Item 1 & 2)

WL 0012



1. Wall Assembly -- The 1 or 2 hr fire-rated gypsum board/stud wall assembly shall be constructed of the materials and in the manner described in the individual U400 Series Wall or Partition Design in the UL Fire Resistance Directory and shall include the following construction features:

- A. Studs -- Steel studs 3-1/2 in. deep, fabricated from 25 MSG galv steel, spaced max 24 in. OC.
- B. Gypsum Board* -- The gypsum board type, number of layers, fastener type and sheet orientation shall be as specified in the individual Wall and Partition Design. Max area of opening is 450 sq in with max dimension of 30 in.

The hourly F and T Ratings of the firestop system are equal to the hourly fire rating of the wall assembly in which it is installed.

2. Fill, Void or Cavity Material* -- Foam Fill material applied within annulus flush with both surfaces of the wall. Min fill material thickness for 1 hr F and T Ratings is 4-3/4 in. Min fill material thickness for 2 hr F and T Ratings is 6 in.

HILTI CONSTRUCTION CHEMICALS, DIV OF
HILTI INC -- CP 620 Fire Foam

*Bearing the UL Classification Mark



Hilti Firestop Systems

Reproduced by HILTI, Inc. Courtesy of
Underwriters Laboratories, Inc.
July 24, 2002