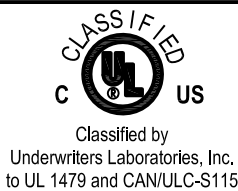
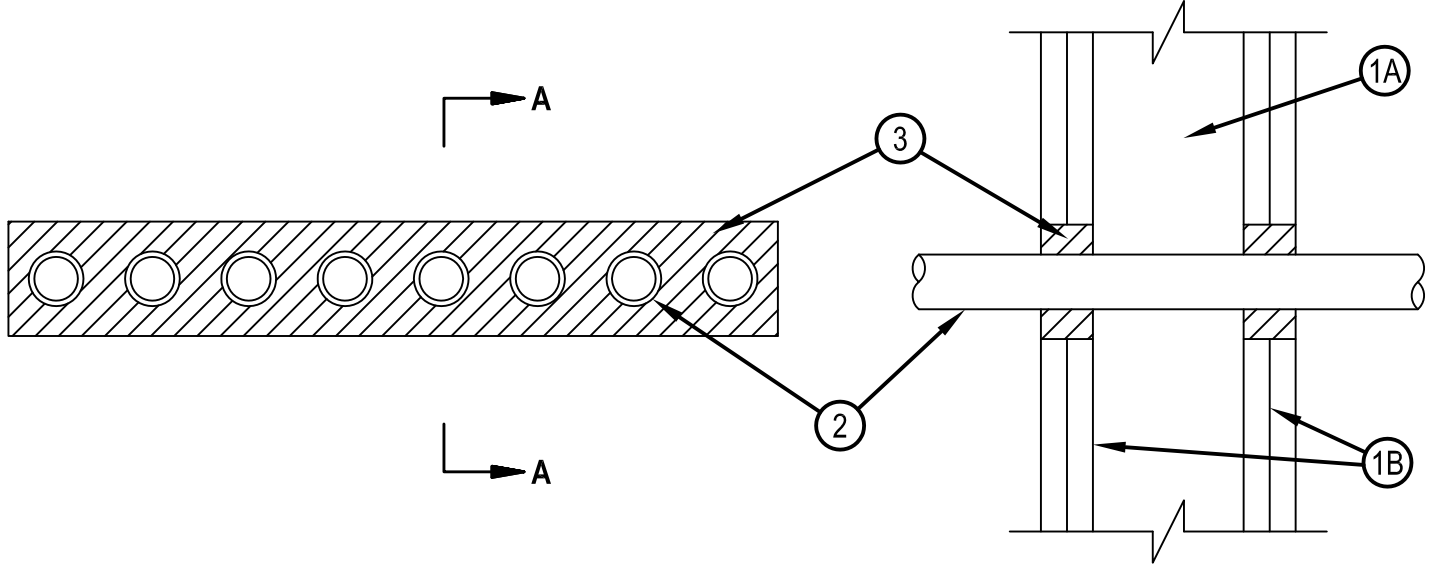


System No. W-L-1095



ANSI/UL1479 (ASTM E814)	CAN/ULC S115
F Ratings — 1 and 2 Hr (See Item 1)	F Ratings — 1 and 2 Hr (See Item 1)
T Ratings — 1 and 2 Hr (See Item 3)	FT Ratings — 1 and 2 Hr (See Item 3)
L Rating At Ambient - Less Than 1 CFM/sq ft	FH Ratings — 1 and 2 Hr (See Item 1)
L Rating At 400 F - 4 CFM/sq ft	FTH Ratings — 1 and 2 Hr (See Item 3)
	L Rating At Ambient - Less Than 1 CFM/sq ft
	L Rating At 400 F -4 CFM/sq ft



SECTION A-A

- Wall Assembly — The 1 or 2 h fire-rated gypsum wallboard/stud wall assembly shall be constructed of the materials and in the manner described in the individual U300 or U400 Series Wall and Partition Designs in the UL Fire Resistance Directory and shall include the following construction features:
 - Studs — Wall framing may consist of either wood studs or steel channel studs. Wood studs to consist of nom 2 by 4 in. (51 by 102 mm) lumber spaced 16 in. (406 mm) OC. Steel studs to be min 2-1/2 in. (64 mm) wide and spaced max 24 in. (610 mm) OC.
 - Gypsum Board* — 5/8 in. (16 mm) thick, 4 ft (122 cm) wide with square or tapered edges. The gypsum wallboard type, thickness, number of layers, fastener type and sheet orientation shall be as specified in the individual U300 or U400 Series Design in the UL Fire Resistance Directory. Max size of opening 2-5/8 in. (67 mm) by 18 in. (457 mm). The hourly F Rating of the firestop system is equal to the hourly fire rating of the wall assembly in which it is installed.
 - Electric Metallic Tubing (EMT) — One or more nom 1 in. (25 mm) diam steel electric tubing. The annular space shall be min 1/2 in. (13 mm) to a max 1 in. (25 mm). Conduit to be rigidly supported on both sides of wall assembly.
 - Fill, Void or Cavity Material* — Sealant — For 2 h F Rating, min 1-1/4 in. (32 mm) thickness of fill material applied within the annulus, flush with both surfaces of wall. For 1 h F Rating, min 5/8 in. (16 mm) thickness of fill material applied within the annulus, flush with both surfaces of wall.
- HILTI CONSTRUCTION CHEMICALS, DIV OF HILTI INC — FS-One Sealant or FS-ONE MAX Intumescent Sealant
- * Indicates such products shall bear the UL or cUL Certification Mark for jurisdictions employing the UL or cUL Certification (such as Canada), respectively.



Reproduced by HILTI, Inc. Courtesy of Underwriters Laboratories, Inc. January 21, 2015