

# PLASTIC PIPE THROUGH CONCRETE FLOOR ASSEMBLY

F-RATING = 2-HR.

FT-RATING = 1-1/2-HR. OR 2-HR.

FH AND FTH-RATINGS = 0-HR.

L-RATING AT AMBIENT = LESS THAN 1 L/S PER DEVICE

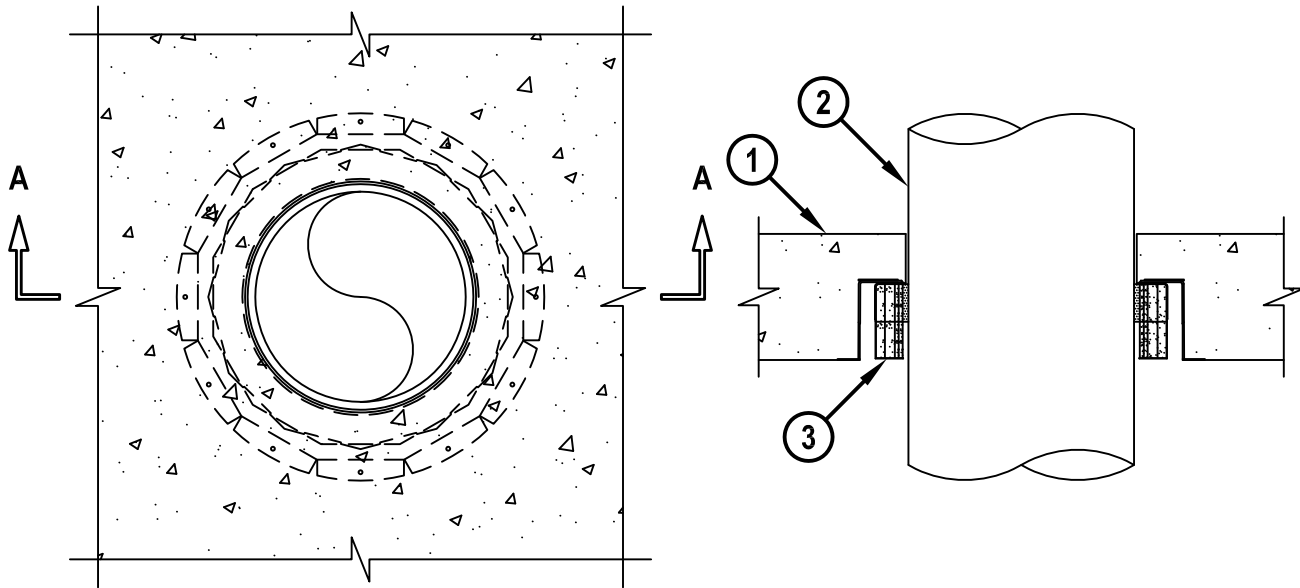
L-RATING AT 400°F = LESS THAN 1 L/S PER DEVICE

W-RATING = CLASS I (SEE NOTE BELOW)

cUL FB2062a.071817

**TOP VIEW**

**SECTION A-A**



**SYSTEM TESTED WITH A PRESSURE DIFFERENTIAL OF 50 Pa BETWEEN THE EXPOSED AND THE UNEXPOSED SURFACES WITH THE HIGHER PRESSURE ON THE EXPOSED SIDE.**

1. LIGHTWEIGHT OR NORMAL WEIGHT CONCRETE FLOOR ASSEMBLY (MINIMUM 6" THICK) (2-HR. FIRE-RATING).
2. NOMINAL 8" OR 10" DIAMETER XFR-PVC PLASTIC PIPE (SCHEDULE 40) (CLOSED OR VENTED PIPING SYSTEM).
3. HILTI CFS-CID P [8" OR 10"] FIRESTOP CAST-IN DEVICE CAST OR GROUTED INTO CONCRETE FLOOR. DEVICE SIZED TO MATCH PIPE DIAMETER.

**NOTE : [OPTIONAL] FOR W-RATINGS ONLY, THE FOLLOWING MATERIALS MUST BE INSTALLED :**

**A. MINIMUM 1" THICKNESS MINERAL WOOL (MIN. 4 PCF DENSITY) TIGHTLY PACKED AND RECESSED TO ACCOMMODATE SEALANT. MINERAL WOOL SHALL NOT EXTEND INTO THE WRAP STRIP LAYERS.**

**B. MINIMUM 1/2" DEPTH HILTI CFS-SIL GG SILICONE FIRESTOP SEALANT OR HILTI CFS-SIL SL SELF-LEVELING SILICONE FIRESTOP SEALANT FLUSH WITH TOP SURFACE OF FLOOR.**



HILTI, Inc.  
Plano, Texas USA (800) 879-8000

Sheet	1 of 1
Scale	7/64" = 1"
Date	July 18, 2017

Drawing No.  
**cUL**  
**FB2062a**