



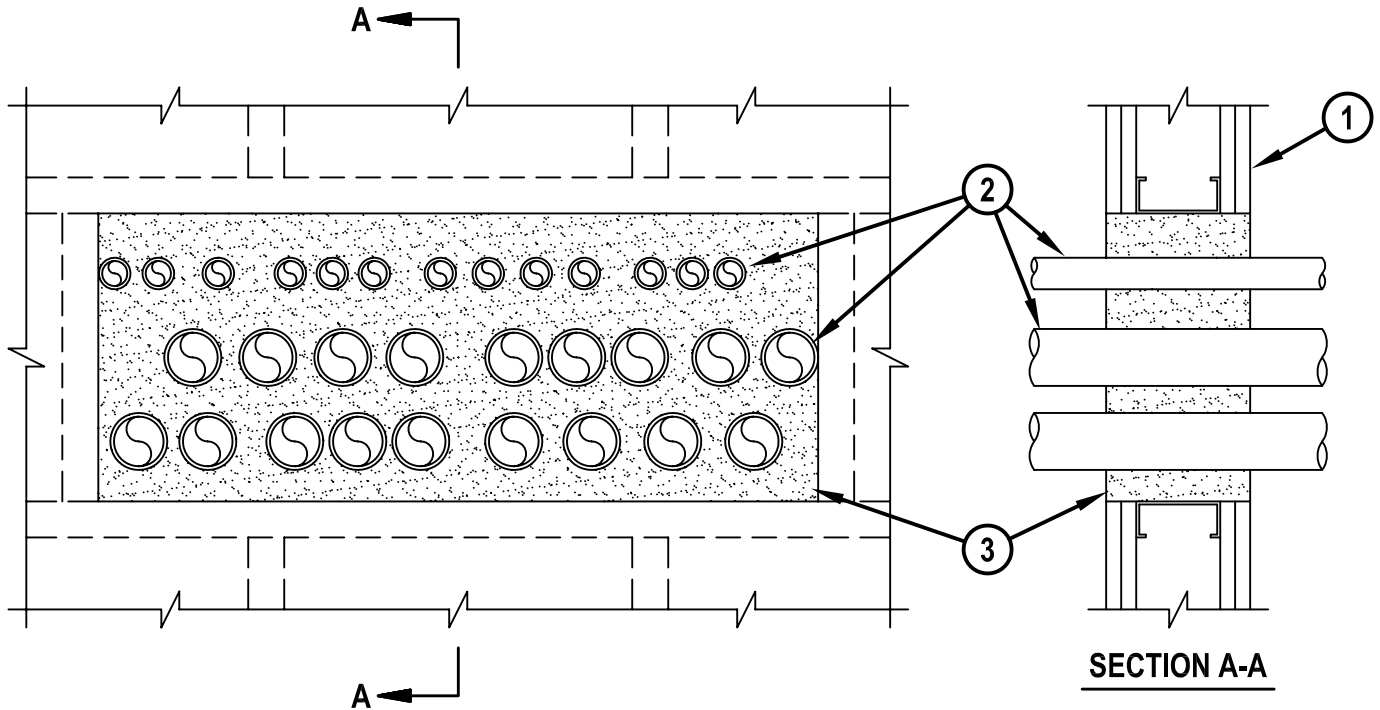
Classified by  
Underwriters Laboratories, Inc.  
to UL 1479 and CAN/ULC-S115

# System No. W-L-1249

F Ratings - 1 and 2 Hr (See Items 1 and 3)

T Rating - 1/2 Hr

WL 1249



1. Wall Assembly The 1 or 2 hr fire-rated gypsum board/stud wall assembly shall be constructed of the materials and in the manner described in the individual U400 Series Wall or Partition Design in the UL Fire Resistance Directory and shall include the following construction features.

A. Studs Steel studs 3-1/2 in. deep, fabricated from 25 MSG galv steel, spaced max 24 in. OC.

B. Gypsum Boards\* The gypsum board type, number of layers, fastener type and sheet orientation shall be as specified in the individual Wall and Partition Design. Max area of opening is 360 sq in. with max dimension of 30 in.

The hourly F Rating of the firestop system is equal to the hourly fire rating of the wall assembly in which it is installed.

2. Through Penetrants One or more nom 2 in. diam (or smaller) rigid steel conduit or electrical metallic tubing (EMT) to be installed within the opening. The annular space between conduits or tubing shall be min 0 in. (point contact) to max 3-3/8 in. The annular space between conduits or tubing and periphery of opening shall be min 0 in. (point contact) to max 3 in. Conduit or tubing to be rigidly supported on both sides of wall assembly.

3. Fill Void or Cavity Material - Foam\* Fill material applied within annulus flush with both surfaces of the wall. Min fill material thickness for 1 Hr F Rating is 4-3/4 in. Min fill material thickness for 2 Hr F Rating is 6 in.

HILTI CONSTRUCTION CHEMICALS, DIV OF HILTI INC -- CP 620 Fire Foam

\*Bearing the UL Classification Mark



**Hilti Firestop Systems**

Reproduced by HILTI, Inc. Courtesy of  
Underwriters Laboratories, Inc.

December 7, 2001