



Underwriters Laboratories, Inc.
to CAN/ULC-S115



WL 2678

System No. W-L-2678

F Rating - 1 and 2 Hr (See Item 1)

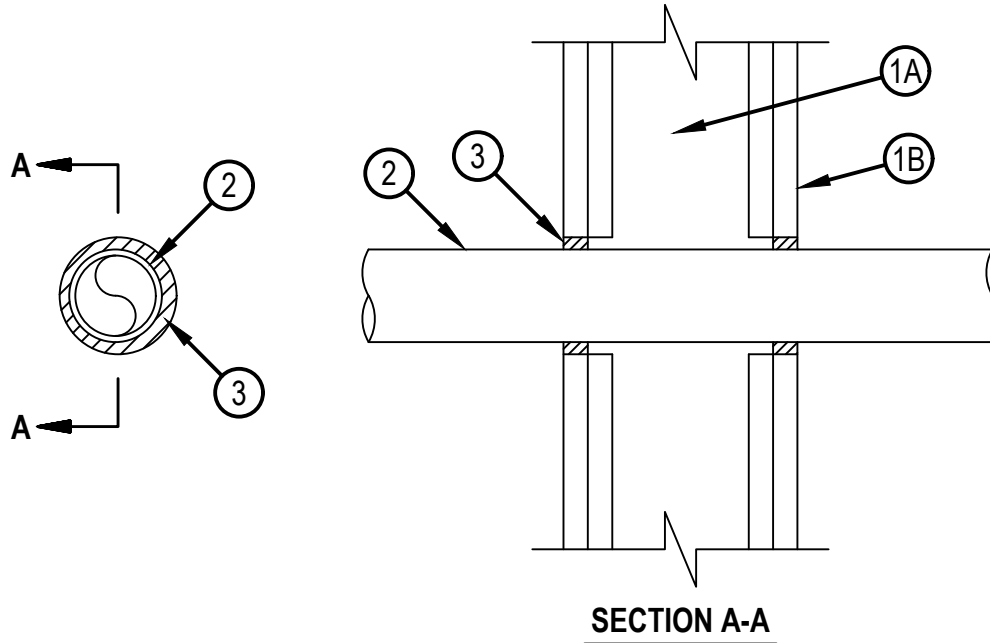
FT Rating - 0 Hr

FH Rating - 1 and 2 Hr (See Item 1)

TH Rating - 0 Hr

L Rating At Ambient - Less Than 5.1 L/s/m²

L Rating At 400 F - Less Than 20.4 L/s/m²



System tested with a pressure differential of 2.5 Pa between the exposed and the unexposed surfaces with the higher pressure on the exposed side.

1. Wall Assembly — The fire-rated gypsum board/stud wall assembly shall be constructed of the materials and in the manner specified in the individual U300, U400, V400 or W400 Series Wall and Partition Designs in the UL fire Resistance Directory and shall include the construction features noted below:
 - A. Studs — Wall framing may consist of either wood studs or steel channel studs. Wood studs to consist of nom 51 by 102 mm (2 by 4 in.) lumber spaced max 406 mm (16 in.) OC. Steel studs to be min 89 mm (3-1/2 in.) wide and spaced max 610 mm (24 in.) OC.
 - B. Gypsum Board* — Nom 16 mm (5/8 in.) thick gypsum board, as specified in the individual Wall and Partition Design. Diam of opening shall be 25 mm (1 in.) larger than the nom pipe diam.

The hourly F and FH Ratings of the firestop system are equal to the hourly fire rating of the wall assembly in which it is installed.
2. Chlorinated Polyvinyl Chloride (CPVC) Pipe — One nom 51 mm (2 in.) diam (or smaller) Blazemaster® SDR 13.5 CPVC pipe for use in closed (process or supply) piping systems. Pipe to be installed either concentrically or eccentrically within the firestop system and rigidly supported on both sides of the wall. The annular space between pipe and the periphery of the opening shall be min 0 mm (point contact) to a max 13 mm (1/2 in.).
3. Fill, Void or Cavity Material* - Sealant — Min 16 mm (5/8 in.) thickness of fill material applied within annulus, flush with both surfaces of wall. At point contact location, a min 16 mm (5/8 in.) diam bead of fill material shall be applied to the wall/penetrant interface on both surfaces of the wall.
HILTI CONSTRUCTION CHEMICALS, DIV OF HILTI INC — FS-ONE MAX Intumescent Sealant

* Indicates such products shall bear the UL or cUL Certification Mark for jurisdictions employing the UL or cUL Certification (such as Canada), respectively.

+ Bearing the UL Listing Mark



Reproduced by HILTI, Inc. Courtesy of
Underwriters Laboratories, Inc.
August 15, 2017