

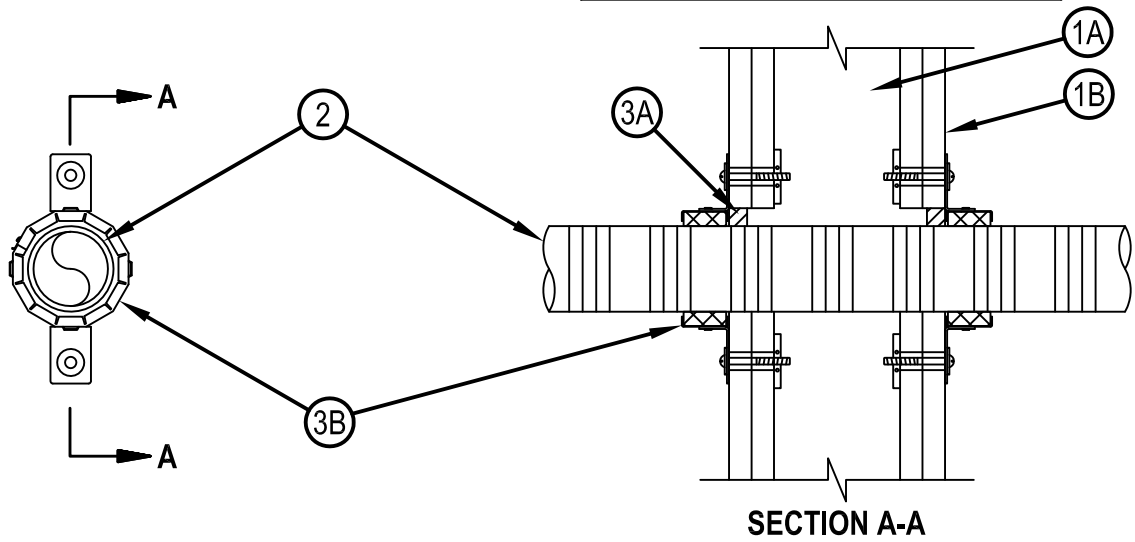


Classified by  
Underwriters Laboratories, Inc.  
to UL 1479 and CAN/ULC-S115

## System No. W-L-2676

WL 2676

ANSI/UL1479 (ASTM E814)	CAN/ULC S115
F Ratings — 1 and 2 Hr (See Item 1)	F Ratings — 1 and 2 Hr (See Item 1)
T Ratings — 0 Hr and 1-1/2 Hr (See Item 1)	FT Ratings — 0 and 1-1/2 Hr (See Item 1)
	FH Ratings — 1 and 2 Hr (See Item 1)
	FTH Ratings — 0 and 1-1/2 Hr (See Item 1)



System tested with a pressure differential of 50 Pa between the exposed and the unexposed surfaces with the higher pressure on the exposed side.

- Wall Assembly** — The fire-rated gypsum board/stud wall assembly shall be constructed of the materials and in the manner specified in the individual U300, U400, V400 or W400 Series Wall and Partition Designs in the UL fire Resistance Directory and shall include the construction features noted below:
  - Studs — Wall framing may consist of either wood studs or steel channel studs. Wood studs to consist of nom 2 by 4 in. (51 by 102 mm) lumber spaced max 16 in. (406 mm) OC. Steel studs to be min 3-1/2 in. (89 mm) wide and spaced max 24 in. (610 mm) OC.
  - Gypsum Board\* — Nom 5/8 in. (16 mm) thick gypsum board, as specified in the individual Wall and Partition Design. Max diam of opening is 2-7/8 in. (73 mm).

The hourly F and FH Ratings of the firestop system are equal to the hourly fire rating of the wall assembly in which it is installed. The T, FT and FTH Ratings are 0 and 1-1/2 Hr for 1 and 2 Hr rated assemblies, respectively.
- Electrical Nonmetallic Tubing+** — Nom 2 in. (51 mm) diam (or smaller) corrugated wall electrical nonmetallic tubing (ENT). Annular space between periphery of opening to be min 0 in. (point contact) to max 1/2 in. (13 mm). ENT to be installed as specified in the National Electric Code. See Electrical Nonmetallic Tubing (FKHU) category in the Electrical Construction Material Directory for names of manufacturers.
- Firestop System** — The firestop system shall consist of the following:
  - Fill, Void or Cavity Material\* - Sealant — Min 1/2 in. (13 mm) thickness of fill material applied within the annulus, flush with both surfaces of wall.  
HILTI CONSTRUCTION CHEMICALS, DIV OF HILTI INC — FS-ONE MAX Intumescent Sealant
  - Firestop Device\* - Firestop Collar — Firestop collar sized to diam of penetrant shall be wrapped around the outer circumference of the pipe and installed in accordance with the accompanying installation instructions. Collar to be installed and latched around the pipe and secured to both sides of the wall using the anchor hooks provided with the collar. The anchor hooks are to be secured to the surface of wall with min 3/16 in. (4.8 mm) diam by min 2-1/2 in. (64 mm) long steel toggle bolts or nom 1-1/4 in. (32 mm) long steel laminating drywall screws in conjunction with min 3/4 in. (19 mm) diam steel fender washers.  
HILTI CONSTRUCTION CHEMICALS, DIV OF HILTI INC — CP 643 63/2"N, CP 643 63/1.5"N

\* Indicates such products shall bear the UL or cUL Certification Mark for jurisdictions employing the UL or cUL Certification (such as Canada), respectively.



**Hilti Firestop Systems**

Reproduced by HILTI, Inc. Courtesy of  
Underwriters Laboratories, Inc.  
August 14, 2017