

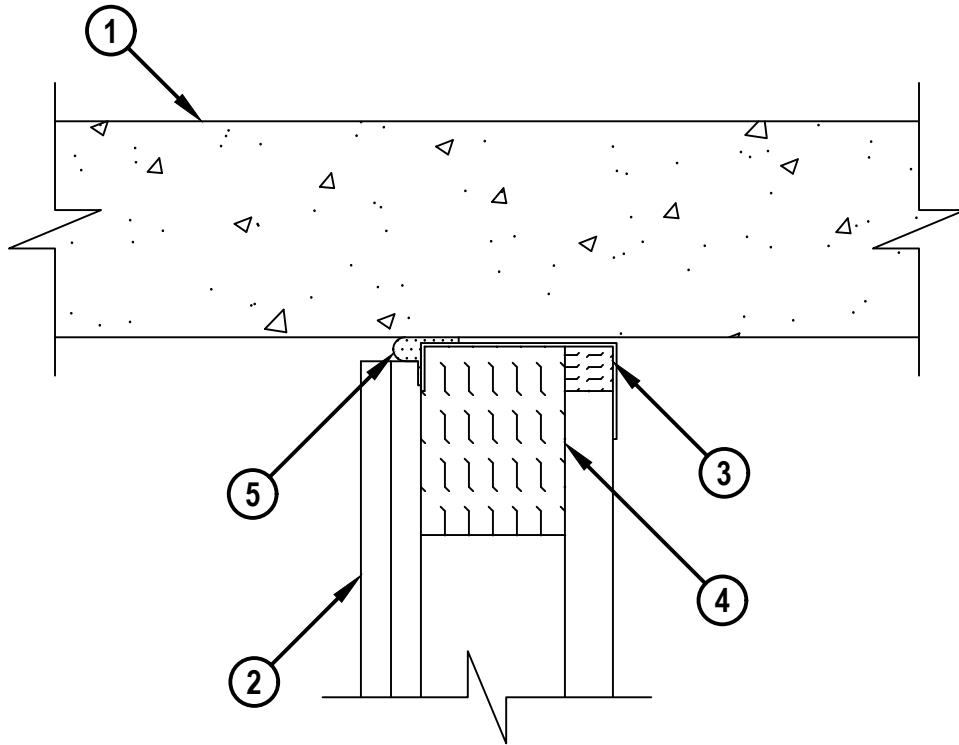
UL/cUL SYSTEM NO. HW-D-0824a

TOP OF WALL JOINT : GYPSUM SHAFT WALL ASSEMBLY

ASSEMBLY RATING = 1-HR. OR 2-HR.

CLASS II MOVEMENT CAPABILITIES - 25% COMPRESSION OR EXTENSION

CROSS-SECTIONAL VIEW



HW-D-0824d.032323



HILTI, Inc.
Plano, Texas USA (800) 879-8000

Sheet	1 of 2
Scale	1/4" = 1"
Date	Mar. 23, 2023

Drawing No.
**HWD
0824d**

Saving Lives through Innovation and Education

UL/cUL SYSTEM NO. HW-D-0824a

TOP OF WALL JOINT : GYPSUM SHAFT WALL ASSEMBLY

ASSEMBLY RATING = 1-HR. OR 2-HR.

CLASS II MOVEMENT CAPABILITIES - 25% COMPRESSION OR EXTENSION

HW0824d.032323

1. CONCRETE FLOOR ASSEMBLY (2-HR. FIRE-RATING) :
 - A. LIGHTWEIGHT OR NORMAL WEIGHT CONCRETE FLOOR (MINIMUM 4-1/2" THICK).
 - B. ANY UL/cUL CLASSIFIED PRECAST (HOLLOW-CORE) CONCRETE FLOOR (MINIMUM 6" THICK).
2. GYPSUM SHAFT WALL ASSEMBLY (UL/cUL CLASSIFIED U400 OR V400 SERIES) (1-HR. OR 2-HR. FIRE-RATING) (2-HR. SHOWN) TO INCLUDE THE FOLLOWING CONSTRUCTION FEATURES :
 - A. "J" SHAPED CEILING RUNNER SIZED TO ACCOMMODATE STEEL STUDS, FLANGE HEIGHT OF CEILING RUNNER SHALL BE MINIMUM 1/4" GREATER THAN THE MAXIMUM EXTENDED JOINT WIDTH. RUNNER SECURED TO CONCRETE FLOOR WITH STEEL FASTENERS OR WELDS SPACED MAXIMUM 24" O/C.
 - B. "C-H" SHAPED STUDS (MINIMUM 4" WIDE, MINIMUM 25 GA.) CUT 1/2" TO 3/4" LESS IN LENGTH THAN ASSEMBLY HEIGHT, NESTING IN CEILING RUNNER WITHOUT ATTACHMENT.
 - C. NOMINAL 1" THICK GYPSUM LINER PANEL CUT 3/4" LESS IN LENGTH THAN ASSEMBLY HEIGHT. TYPE AND SHEET ORIENTATION AS SPECIFIED IN THE INDIVIDUAL UL DESIGN.
 - D. NOMINAL 5/8" THICK TYPE C GYPSUM WALLBOARD CUT 1/2" LESS IN LENGTH THAN ASSEMBLY HEIGHT WITH SCREW ATTACHMENT 1" TO 1-1/2" BELOW THE BOTTOM OF THE CEILING RUNNER OR SLOTTED CEILING TRACK. NO GYPSUM BOARD ATTACHMENT SCREWS ARE TO PENETRATE THE CEILING TRACK. TYPE, NUMBER OF LAYERS, AND SHEET ORIENTATION AS SPECIFIED IN THE INDIVIDUAL UL DESIGN.
3. MINIMUM 1" THICKNESS HILTI 767 SPEED STRIPS, OR MINERAL WOOL SAFING (MIN. 4 PCF DENSITY) COMPRESSED 50%, FLUSH WITH GYPSUM BOARD SURFACES.
4. MINIMUM 4" DEPTH MINERAL WOOL SAFING (MIN. 4 PCF DENSITY) COMPRESSED 25% AND BUTTED TO UNDERSIDE OF CEILING RUNNER. DEPTH OF MINERAL WOOL TO EQUAL THE WIDTH OF CEILING RUNNER.
5. HILTI CFS-TTS-OS OR CFS-TTS R OS FIRESTOP TOP TRACK SEAL INSTALLED OVER CEILING RUNNER ON FINISHED SIDE OF WALL PRIOR TO ATTACHMENT TO UNDERSIDE OF CONCRETE FLOOR IN ACCORDANCE WITH THE ACCOMPANYING INSTALLATION INSTRUCTIONS.

NOTES : 1. MAXIMUM WIDTH OF JOINT = 1/2".
2. AS AN ALTERNATE TO CEILING RUNNER IN ITEM NO. 2A, MINIMUM 4" WIDE BY 1" OR 1-1/4" DEEP CHANNEL (MIN. 24 GA.) MAY BE USED.



HILTI, Inc.
Plano, Texas USA (800) 879-8000

Sheet	2 of 2
Scale	-
Date	Mar. 23, 2023

Drawing No.

**HWD
0824d**

Saving Lives through Innovation and Education