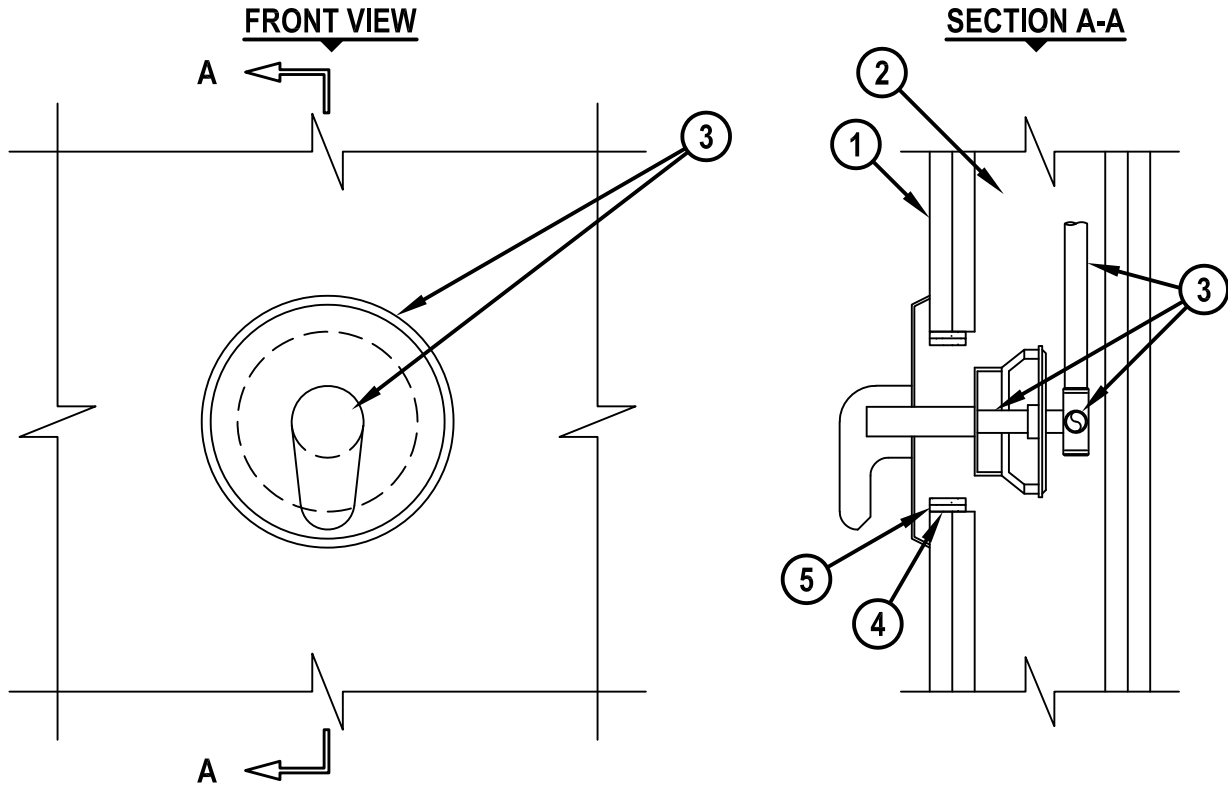


SHOWER VALVE ASSEMBLY THROUGH GYPSUM WALL ASSEMBLY

F-RATING = 1-HR. OR 2-HR.

T-RATING = 1-HR. OR 2-HR.

WL7271b.091818



1. GYPSUM WALL ASSEMBLY (UL/cUL CLASSIFIED U300, U400, V400, OR W400 SERIES) (1-HR. OR 2-HR. FIRE-RATING) (2-HR. SHOWN).
2. [NOT SHOWN] WOOD STUDS TO CONSIST OF NOMINAL 2" x 4" LUMBER (SPACED MAXIMUM 16" O/C). STEEL STUDS TO BE MINIMUM 3-1/2" WIDE (SPACED MAXIMUM 24" O/C).
3. PENETRATING ITEM TO BE A SHOWER VALVE ASSEMBLY CENTERED WITHIN THE OPENING AND CONSISTING OF THE FOLLOWING :
 - A. STAINLESS STEEL OR STEEL HANDLE, BRASS MIXING VALVE, AND MINIMUM 7" DIAMETER ESCUTCHEON PLATE LAPPING A MINIMUM 1" ONTO WALL BEYOND OPENING.
 - B. MAXIMUM 1/2" NOMINAL DIAMETER COPPER OR IRON SUPPLY PIPES OR TUBES CONNECTED TO SHOWER VALVE ASSEMBLY AND RIGIDLY SUPPORTED WITHIN THE WALL CAVITY.
4. MINIMUM 3/8" DEPTH HILTI CFS-S SIL GG FIRESTOP SILICONE SEALANT INSTALLED AROUND PERIPHERY OF OPENING ALONG CUT EDGE OF GYPSUM BOARD.
5. TWO LAYERS OF HILTI CP 648E WRAP STRIP (NOMINAL 3/16" THICK x 1" WIDE) WRAPPED AROUND INSIDE OF OPENING IN GYPSUM BOARD WITH ENDS BUTTED AND HELD IN PLACE WITH TAPE. WRAP STRIP INSTALLED FLUSH WITH WALL SURFACE AND HELD IN PLACE WITH FIRESTOP SEALANT (ITEM 4).

NOTES : 1. MAXIMUM DIAMETER OF OPENING = 5".
 2. ANNULAR SPACE BETWEEN OPENING AND PENETRATING VALVE = MAXIMUM 1-7/8".



HILTI, Inc.
 Plano, Texas USA (800) 879-8000

Sheet	1 of 1
Scale	3/16" = 1"
Date	Sep. 19, 2018

Drawing No.
WL 7271b