

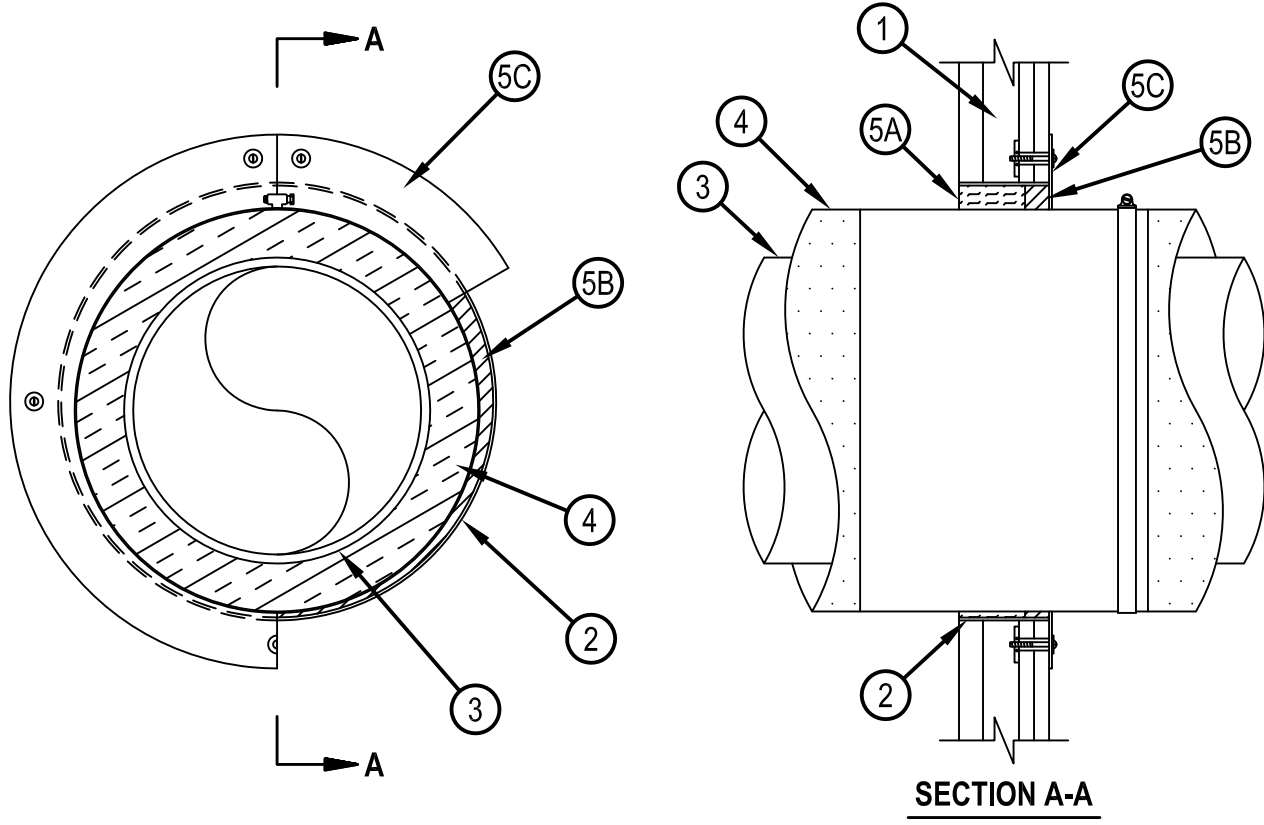


Classified by  
Underwriters Laboratories, Inc.  
to UL 1479 and CAN/ULC-S115

# System No. W-L-5261

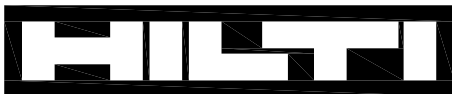
WL 5261

ANSI/UL1479 (ASTM E814)	CAN/ULC S115
F Rating —2 Hr	F Rating —2 Hr
T Rating —3/4 Hr	FT Rating —3/4 Hr
	FH Rating —2 Hr
	FTH Rating —3/4 Hr



1. Wall Assembly — The 2 hr fire-rated gypsum board/stud shaft wall assembly shall be constructed of the materials and in the manner specified in the individual U400, V400 or W400 Series Wall and Partition Designs in the UL Fire Resistance Directory and shall incorporate the following construction features:

- A. Steel Studs — "C-H" or "C-T" shaped studs, min 2-1/2 in. (64 mm) wide by 1-5/8 in. (41 mm) deep, fabricated from min No. 25 gauge (0.5 mm) galv steel, spaced max 24 in. (610 mm) OC.
- B. Gypsum Board\* — 1 in. (25 mm) thick, 24 in. (610 mm) wide gypsum liner panels installed vertically. Max diam of circular cutout in gypsum liner panel is 18-1/2 in. (470 mm).
- C. Gypsum Board\* — 1/2 in. (13 mm) or 5/8 in. (16 mm) thick, 48 in. (1219 mm) wide gypsum boards. The gypsum board type, thickness, number of layers, fastener type and sheet orientation shall be as specified in the individual Wall and Partition Design. Max diam of circular cutout in gypsum board is 18-1/2 in. (470 mm).



**Hilti Firestop Systems**

Reproduced by HILTI, Inc. Courtesy of  
Underwriters Laboratories, Inc.  
January 26, 2015

## System No. W-L-5261

WL 5261

2. Metallic Sleeve — Cylindrical sleeve fabricated from 28 gauge (0.4 mm) or heavier galv steel having a min 2 in. (51 mm) lap along longitudinal seam. Outside diam of sleeve to be tightly fitted with inside diam of opening, flush with both surfaces of wall assembly.
3. Through-Penetrants — One metallic pipe or tubing to be installed either concentrically or eccentrically within the firestop system. Pipe or tubing to be rigidly supported on both sides of wall assembly. The following types and sizes of metallic pipes or tubing may be used:
  - A. Steel Pipe — Nom 12 in. (305 mm) diam (or smaller) Schedule 10 (or heavier) steel pipe.
  - B. Iron Pipe — Nom 12 in. (305 mm) diam (or smaller) cast or ductile iron pipe.
  - C. Copper Tubing — Nom 6 in. (152 mm) diam (or smaller) Type L (or heavier) copper tubing.
  - D. Copper Pipe — Nom 6 in. diam (152 mm or smaller) Regular (or heavier) copper pipe.
4. Pipe Covering Materials\* — Cellular Glass Insulation — Nom 2 in. (51 mm) thick cellular glass pipe insulation sized to the outside diam of the steel pipe or tube and installed in accordance with the manufacturer's instructions. Min 12 in. (305 mm) long jacket formed of min 0.010 in. (0.25 mm) thick steel or aluminum sheet cut to wrap tightly around the pipe insulation with a min 2 in. (51 mm) lap. Jacket secured with min 1/2 in. (13 mm) wide stainless steel hose clamp or band located within 2 in. (51 mm) of end of the jacket on finished side of wall. The jacket is to be centered within wall. The annular space shall be min 1/4 in. (6 mm) to max 1-1/4 in. (32 mm).  
PITTSBURGH CORNING CORP — FOAMGLASS
5. Firestop System — The firestop system shall consist of the following:
  - A. Packing Material — Min 2-3/4 in. (70 mm) thickness of min 4.0 pcf (64 kg/m<sup>3</sup>) mineral wool batt insulation firmly packed into the opening as a permanent form. Packing material to be recessed from the finished surface of wall to accommodate the required thickness of fill material.
  - B. Fill, Void or Cavity Material\* — Sealant — Min 1 in. (25 mm) thickness of fill material applied within the annulus, flush with the finished surface of wall.  
HILTI CONSTRUCTION CHEMICALS, DIV OF HILTI INC — FS-One Sealant or FS-ONE MAX Intumescent Sealant
  - C. Steel Cover Plate — Min 0.024 in. (0.6 mm) thick (No. 24 MSG) galv steel extending a min of 2 in. (51 mm) beyond the periphery of the opening. Seam of steel cover plate cut from one corner to the center of the plate and around entire circumference of the pipe covering. Seam of steel cover plate tightly butted together and secured to the finished side of the wall by means of 3/16 in. (5 mm) or 1/4 in. (6 mm) diameter toggle bolts with steel washer.

\* Indicates such products shall bear the UL or cUL Certification Mark for jurisdictions employing the UL or cUL Certification (such as Canada), respectively.



**Hilti Firestop Systems**

Reproduced by HILTI, Inc. Courtesy of  
Underwriters Laboratories, Inc.  
January 26, 2015

Page: 2 of 2