

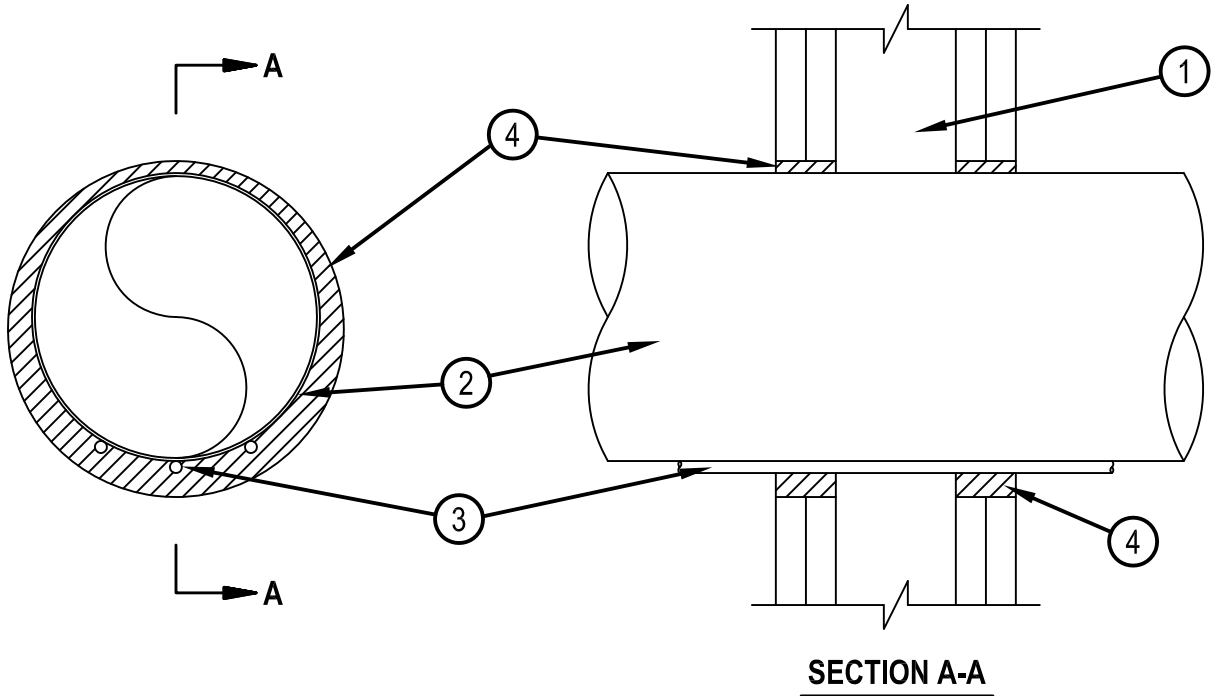


Classified by
Underwriters Laboratories, Inc.
to UL 1479 and CAN/ULC-S115

System No. W-L-8023

WL 8023

ANSI/UL1479 (ASTM E814)	CAN/ULC S115
F Rating — 1 and 2 Hr (See Item 1)	F Rating — 1 and 2 Hr (See Item 1)
T Rating — 0 Hr	FT Rating — 0 Hr
	FH Rating — 1 and 2 Hr (See Item 1)
	FTH Rating — 0 Hr



- 1. Wall Assembly** — The 1 or 2 hr fire rated board/stud wall assembly shall be constructed of the materials and in the manner specified in the individual U300, U400, V400 or W400 Series Wall and Partition Designs in the UL Fire Resistance Directory and shall include the following construction features.

 - A. **Studs** — Wall framing shall consist of either wood studs or steel channel studs. Wood studs to consist of nom 2 by 4 in. (51 by 102 mm) lumber spaced 16 in. (406 mm) OC. Steel studs to be min 2-1/2 in. (64 mm) wide and spaced max 24 in. (610 mm) OC.
 - B. **Gypsum Board*** — One or two layers of nom 5/8 in. (16 mm) thick gypsum board as specified in the individual Wall and Partition Design. Max diam of opening is 7 in. (178 mm).

The hourly F, FH Ratings of the firestop system are equal to the hourly rating of the wall assembly.
- 2. Steel Tube** — Nom 6 in. (152 mm) diam (or smaller) No. 16 ga steel tube installed eccentrically within the opening. The tube may be installed at an angle not greater than 45 degrees from perpendicular. The annular space between the tube and the periphery of the opening shall be min 1/4 in. (6 mm) to max 3/4 in. (19 mm). Tube to be rigidly supported on both sides of wall assembly.
- 3. Cables** — Max three 3/8 in (10 mm) diam two pair No. 22 AWG foil shielded communication cables with polyvinyl chloride (PVC) insulation and jacket. The cables may be installed at an angle not greater than 45 degrees from perpendicular in line with steel tube (Item 2). Min separation between cables and periphery of opening shall be 1/4 in. (6 mm). Separation between cables and tube shall be min 0 in. (point contact) to max 1 in. (25 mm). Cables to be rigidly supported on both sides of wall assembly.
- 4. Fill, Void or Cavity Material* - Sealant** — Min 5/8 in. (16 mm) thickness of fill material applied within annulus for 1 hr rated walls. Min 1-1/4 in. (32 mm) thickness of fill material applied within annulus for 2 hr rated walls. Fill material applied flush with both surfaces of wall.
HILTI CONSTRUCTION CHEMICALS, DIV OF HILTI INC — FS-ONE Sealant or FS-ONE MAX Intumescent Sealant

* Indicates such products shall bear the UL or cUL Certification Mark for jurisdictions employing the UL or cUL Certification (such as Canada), respectively.



Hilti Firestop Systems

Reproduced by HILTI, Inc. Courtesy of
Underwriters Laboratories, Inc.
January 26, 2015