

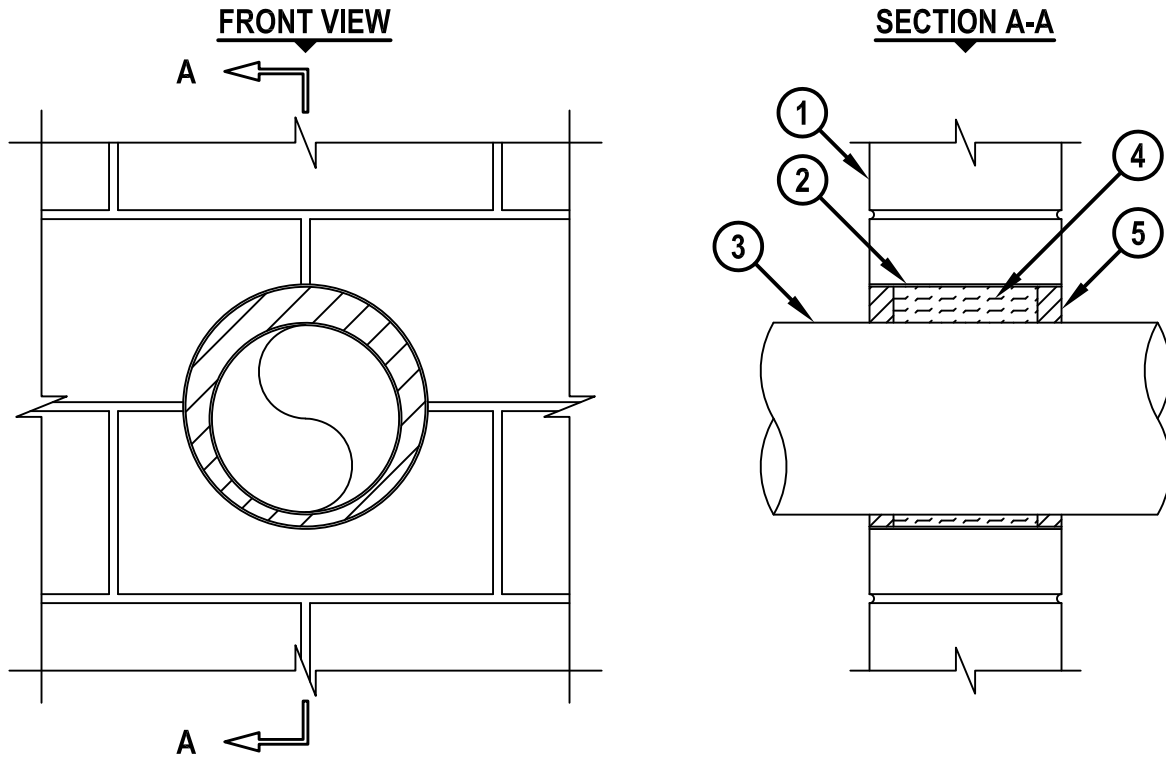
# ALUMINUM TUBING THROUGH CONCRETE WALL OR BLOCK WALL ASSEMBLY

F-RATING = 2-HR.

FT, FH, AND FTH-RATINGS = 0-HR.

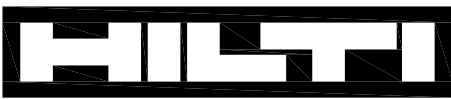
L-RATING AT AMBIENT = LESS THAN 5.1 L/S/M<sup>2</sup>

L-RATING AT 204 C = LESS THAN 5.1 L/S/M<sup>2</sup>



1. CONCRETE WALL ASSEMBLY (2-HR. FIRE-RATING) :
  - A. LIGHTWEIGHT OR NORMAL WEIGHT CONCRETE WALL (MINIMUM 6" THICK).
  - B. ANY UL/cUL CLASSIFIED CONCRETE BLOCK WALL.
2. MAXIMUM 10" DIAMETER SHEET METAL SLEEVE (MIN. 28 GA.) WITH 2" OVERLAP ALONG LONGITUDINAL SEAM. SLEEVE ENDS TO BE FLUSH WITH WALL SURFACES.
3. MAXIMUM 8" NOMINAL DIAMETER ALUMINUM TUBING (MINIMUM WALL THICKNESS OF 0.060").
4. MINERAL WOOL (MIN. 4 PCF DENSITY) TIGHTLY PACKED TO FILL OPENING, RECESSED TO ACCOMMODATE SEALANT.
5. MINIMUM 1" DEPTH HILTI FS-ONE MAX INTUMESCENT FIRESTOP SEALANT FLUSH WITH ENDS OF SLEEVE.

NOTES : 1. MAXIMUM DIAMETER OF OPENING = 10".  
 2. ANNULAR SPACE = MINIMUM 1/2", MAXIMUM 1-1/2".



**Hilti Firestop Systems**

HILTI, Inc.  
 Plano, Texas USA (800) 879-8000

Sheet	1 of 1
Scale	1/8" = 1"
Date	Oct. 11, 2018

Drawing No.

**cUL**  
**WJ1299a**