

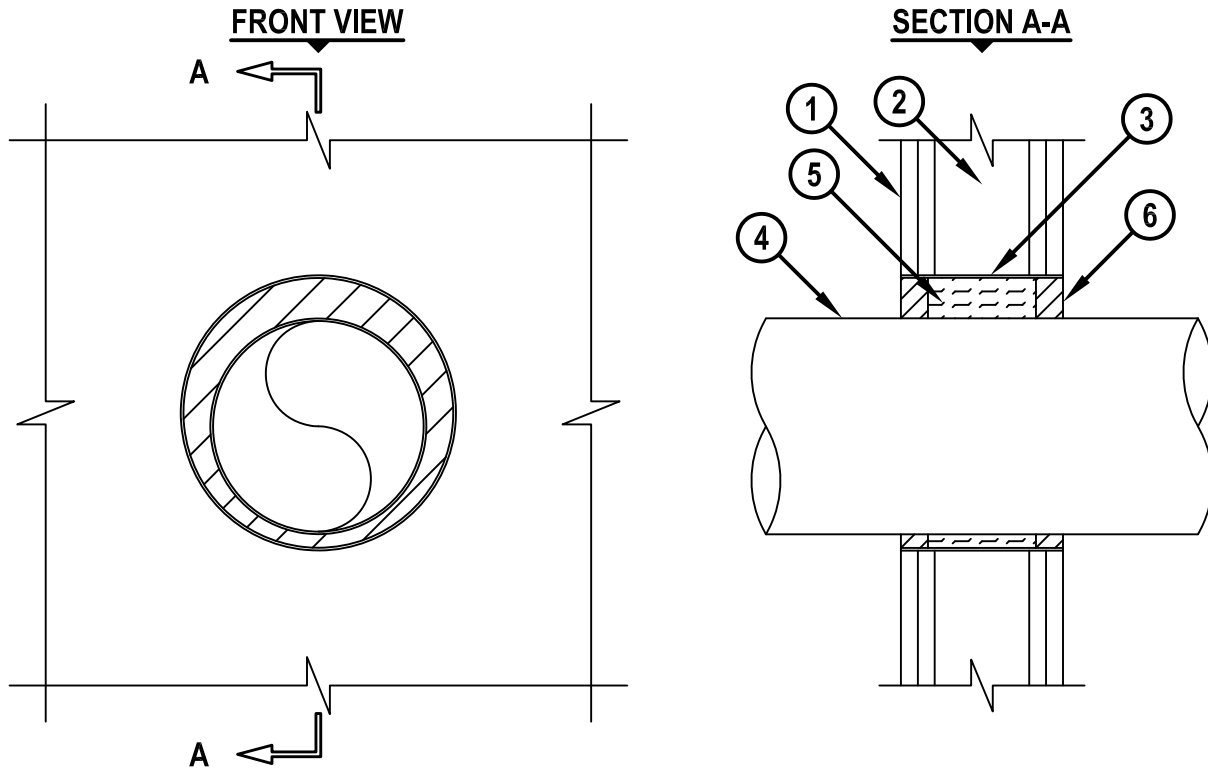
ALUMINUM TUBING THROUGH GYPSUM WALL ASSEMBLY

F-RATING = 2-HR.

FT, FH, AND FTH-RATINGS = 0-HR.

L-RATING AT AMBIENT = LESS THAN 5.1 L/S/M²

L-RATING AT 204 C = LESS THAN 5.1 L/S/M²



cUL WL1550a.101118

1. GYPSUM WALL ASSEMBLY (UL/cUL CLASSIFIED) (1-HR. FIRE-RATING).
2. STEEL STUDS TO BE MINIMUM 3-1/2" WIDE (SPACED MAXIMUM 24" OC).
3. MAXIMUM 10" DIAMETER SHEET METAL SLEEVE (MIN. 28 GA.) WITH 2" OVERLAP ALONG LONGITUDINAL SEAM. SLEEVE ENDS TO BE FLUSH WITH WALL SURFACES.
4. MAXIMUM 8" NOMINAL DIAMETER ALUMINUM TUBING (MINIMUM WALL THICKNESS OF 0.060").
5. MINERAL WOOL (MIN. 4 PCF DENSITY) TIGHTLY PACKED TO FILL OPENING, RECESSED TO ACCOMMODATE SEALANT.
6. MINIMUM 1" DEPTH HILTI FS-ONE MAX INTUMESCENT FIRESTOP SEALANT FLUSH WITH ENDS OF SLEEVE.

NOTES : 1. MAXIMUM DIAMETER OF OPENING = 10".
 2. ANNULAR SPACE = MINIMUM 1/2", MAXIMUM 1-1/2".



HILTI, Inc.
 Plano, Texas USA (800) 879-8000

Sheet	1 of 1
Scale	9/64" = 1"
Date	Oct. 11, 2018

Drawing No.
cUL
WL1550a